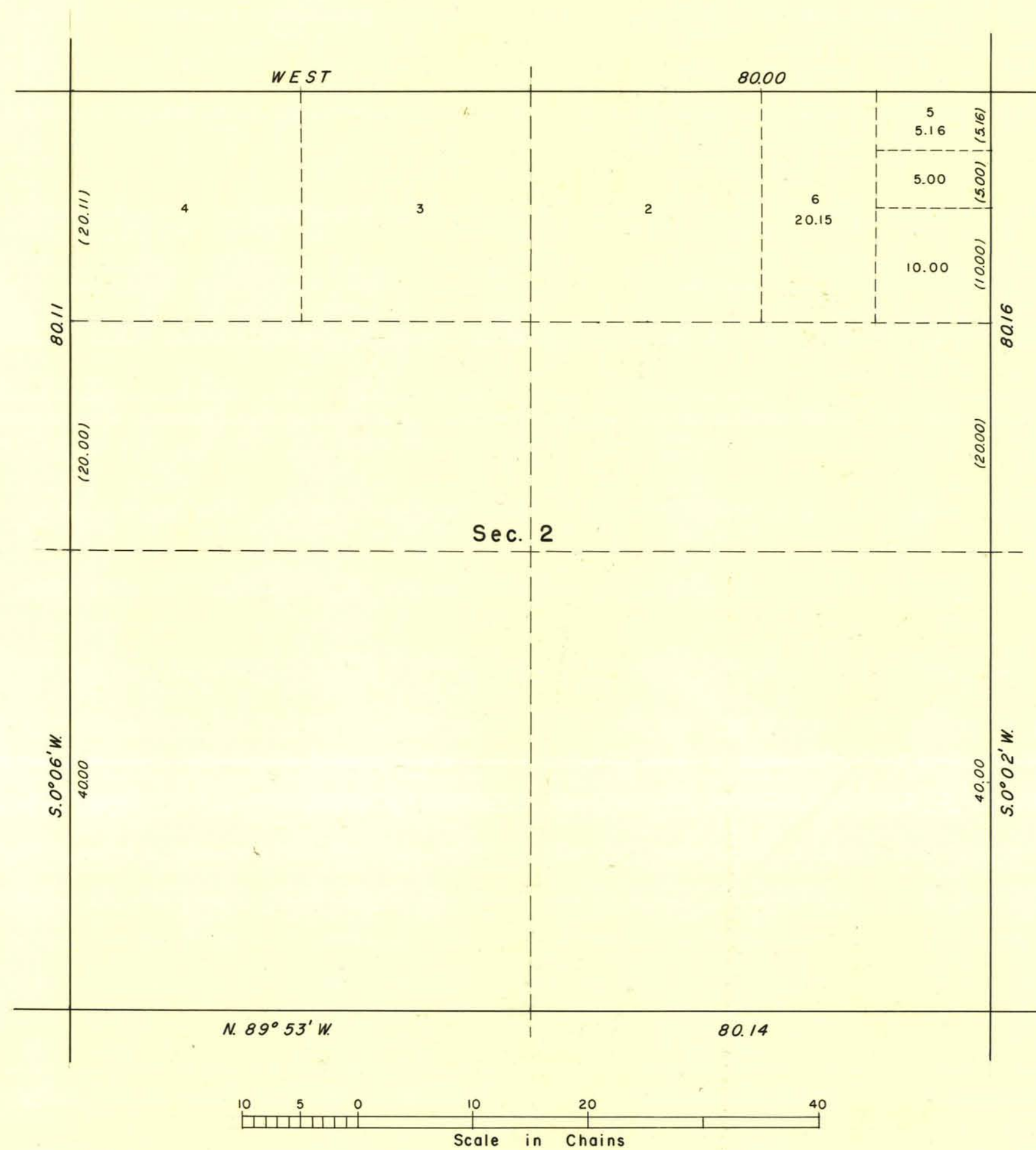
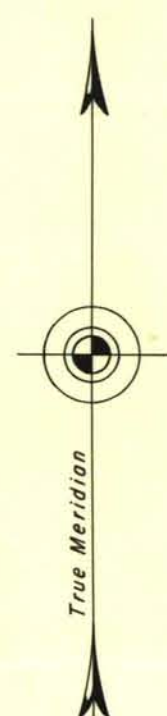


TOWNSHIP 13 NORTH, RANGE 69 EAST, OF THE MOUNT DIABLO MERIDIAN, NEVADA
SUPPLEMENTAL PLAT OF SECTION 2



This plat, showing the subdivision of original lot 1, section 2, T. 13 N., R. 69 E., Mount Diablo Meridian, Nevada, is based upon plat approved February 17, 1879.

UNITED STATES DEPARTMENT OF THE INTERIOR
BUREAU OF LAND MANAGEMENT
Washington, D. C. June 4, 1959

This plat, showing amended lottings, is based upon the official records, and having been correctly prepared in accordance with the regulations, is hereby accepted.

For the Director

Carl G. Harrington

Cadastral Engineering Staff Officer