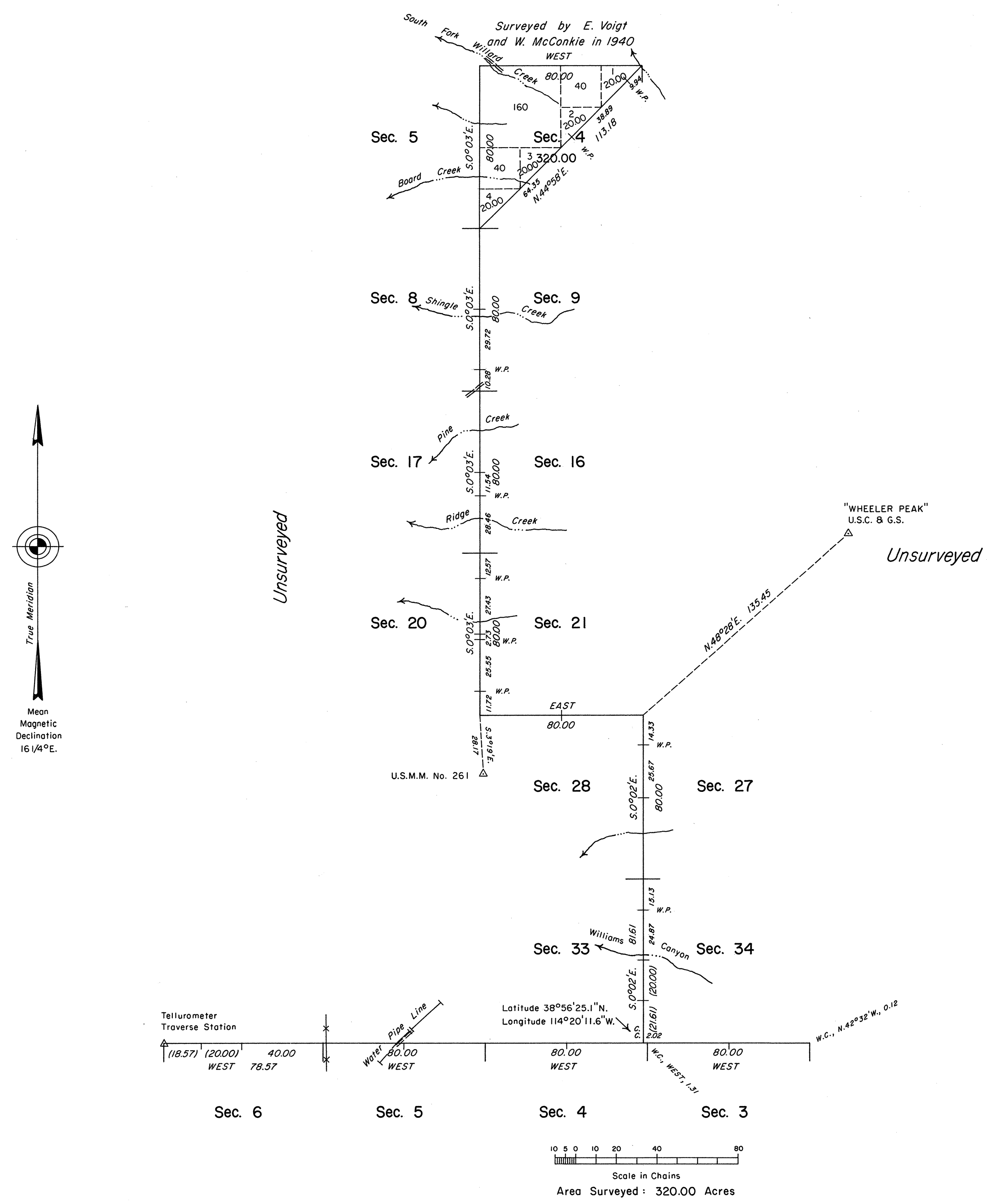


TOWNSHIP 13 NORTH, RANGE 68 EAST, OF THE MOUNT DIABLO MERIDIAN, NEVADA



History of the earlier surveys is contained in the field notes.

A survey of a portion of the north boundary of T. 12 N., R. 68 E., was executed concurrently under this same Group.

This plat represents a survey of a portion of the subdivisional lines and a traverse through section 4 of T. 13 N., R. 68 E., Mount Diablo Meridian, Nevada.

Survey executed by Stephen R. Lambeth, Cadastral Surveyor, beginning July 9, 1987 and completed August 31, 1987, under Special Instructions dated July 7, 1987, for Group No. 650, Nevada.

UNITED STATES DEPARTMENT OF THE INTERIOR  
BUREAU OF LAND MANAGEMENT

Reno, Nevada May 23, 1988

This plat is strictly conformable to the approved field notes, and the survey, having been correctly executed in accordance with the requirements of law and the regulations of this Bureau, is hereby accepted.

For the Director

*Lacel E. Bland*

Chief Cadastral Surveyor

T.13N., R.68E., M.D.M.