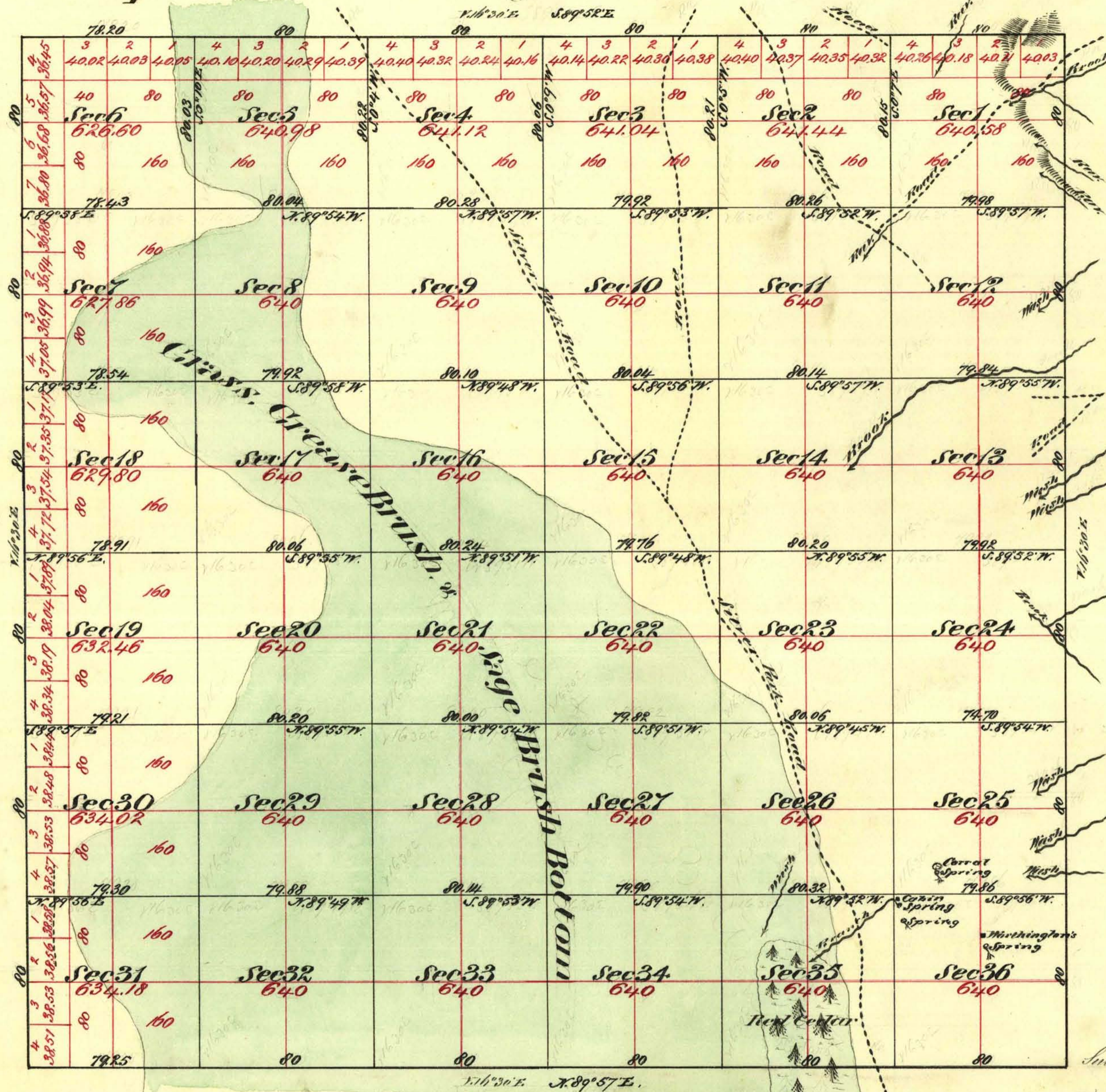


Township N^o 13 North

Range N^o 6 East

Mount Diablo Meridian



Aggregate Area of Public Land 23,990.08 Acres

Commenced October 20th 1871
Completed " 25th "

Subdivision lines not otherwise noted run with a bearing of N 30° E

Surveys Designated	By Whom Surveyed	Date of Contract	Amount of Surveys M ^o Chs Acs	When Surveyed	N ^o of Cont.
Township Lines	E. B. Moore & A. S. Battaman	August 23 rd 1871	23 77 45	1871	46
Subdivision "	" " " " "	" " "	59 75 14	October 1871	"

The above Map of Township N^o 13 North Range N^o 6 East Mount Diablo Meridian, is strictly conformable to the field notes of the Surveyor thereof on file in this office, which have been examined and approved
W. S. Sawyer General's Office
Virginia City Nevada
February 1st 1872

E. S. Davis
W. S. Surveyor General Nevada

3093

T 13 N, R 67 E VP,