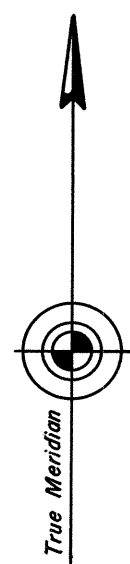
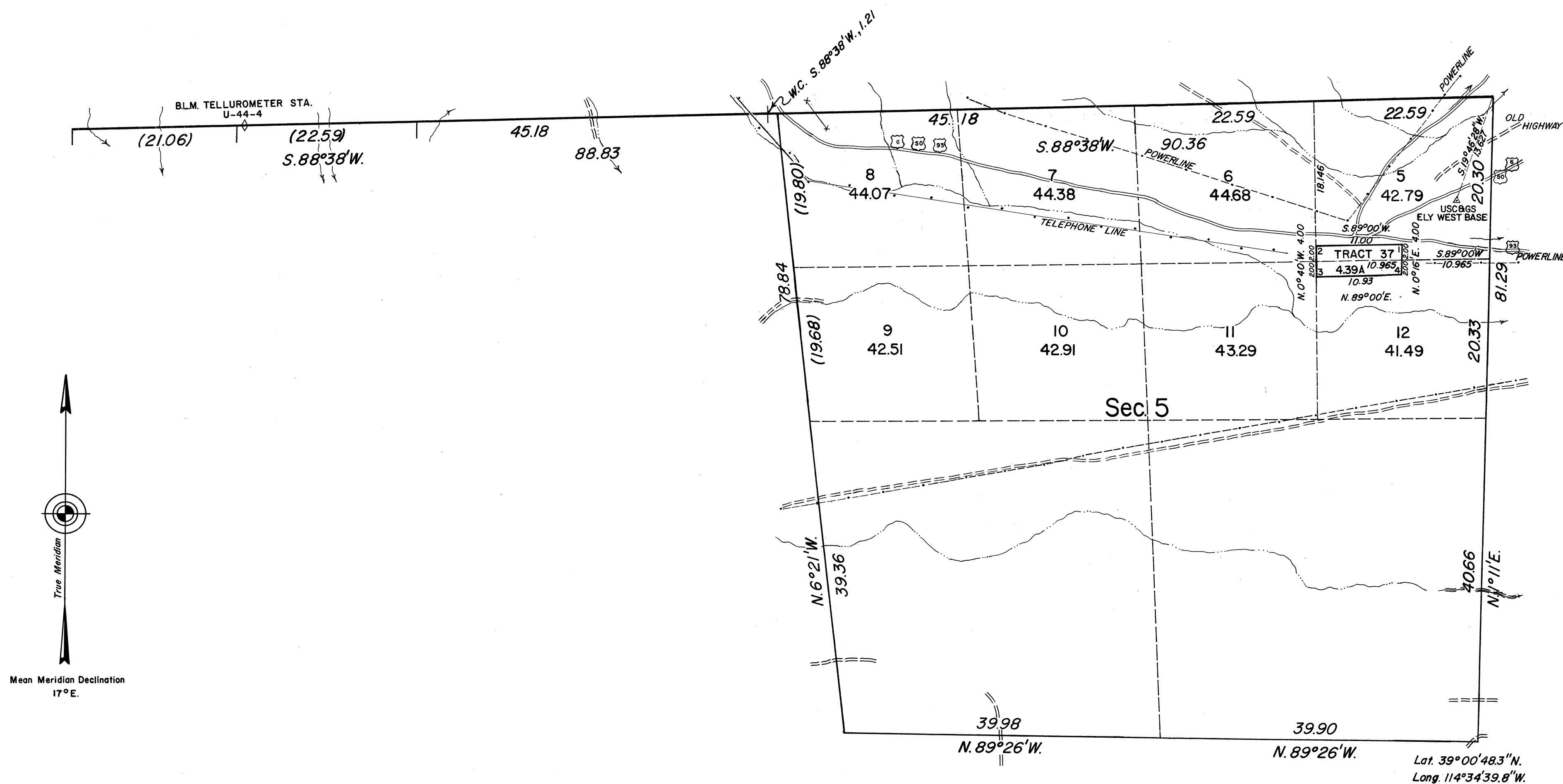


ORIGINAL

# TOWNSHIP 13 NORTH, RANGE 66 EAST OF THE MOUNT DIABLO MERIDIAN, NEVADA

## DEPENDENT RESURVEY AND SURVEY OF TRACT 37

OFFICIALLY FILED  
NEVADA LAND OFFICE  
10:00 AM DEC. 13, 1967



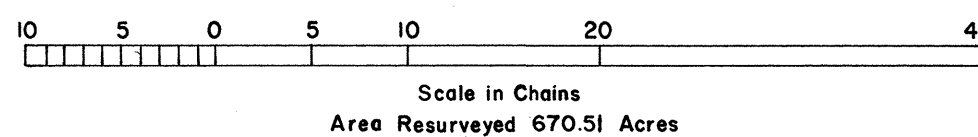
Mean Meridian Declination  
17°E.

History of the earlier surveys is contained in the field notes.

This plat represents a retracement and reestablishment of a portion of the north boundary and the boundaries of section 5, designed to restore all corners in their true original locations according to the best available evidence, and, the survey of Tract 37.

Lotings and areas, except as indicated hereon, are as shown on the plat approved February 1, 1872.

Survey executed by Horace G. Parker, Cadastral Surveyor, November 15 to November 20, 1966, under Special Instructions dated November 15, 1966, for Group No. 444, Nevada.



UNITED STATES DEPARTMENT OF THE INTERIOR  
BUREAU OF LAND MANAGEMENT  
Washington, D. C. November 2, 1967

This plat is strictly conformable to the approved field notes, and the survey, having been correctly executed in accordance with the requirements of law and the regulations of this Bureau, is hereby accepted.

For the Director

*R.E. Brown*

Acting Chief, Division of Engineering