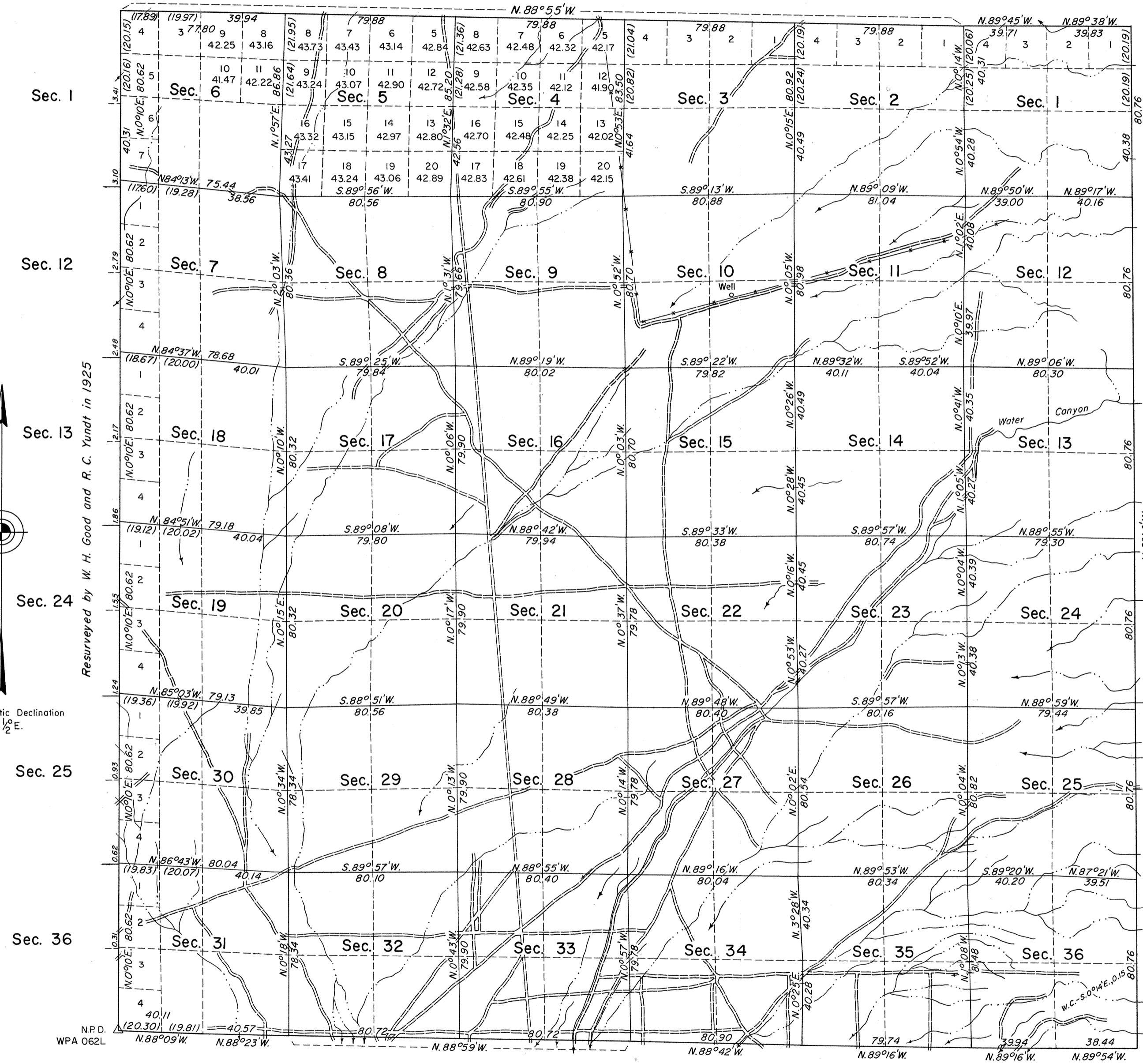


TOWNSHIP 13 NORTH, RANGE 62 EAST, OF THE MOUNT DIABLO MERIDIAN, NEVADA

DEPENDENT RESURVEY



Resurveyed by W. H. Good and R. C. Yundt in 1925

True Meridian

Mean Magnetic Declination
16 1/2° E.

A history of surveys is contained in the field notes.

A dependent resurvey of the south boundary was executed concurrently under T. 12 N., R. 62 E., of this Group.

This plat represents a dependent resurvey of the north and east boundaries and the subdivisional lines of T. 13 N., R. 62 E., designed to restore the corners in their original locations according to the best available evidence.

Lottings and areas, except as shown hereon, are as shown on the plat approved February 23, 1874.

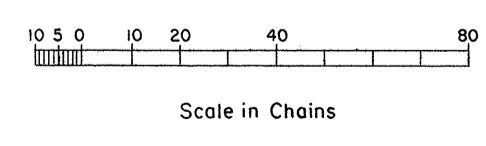
Survey executed by Robert A. Pratt, Cadastral Surveyor, beginning September 28, 1972 and completed November 22, 1972, pursuant to Special Instructions dated July 18, 1972, for Group No. 489, Nevada.

UNITED STATES DEPARTMENT OF THE INTERIOR
BUREAU OF LAND MANAGEMENT
Washington, D.C. December 4, 1974

This plat is strictly conformable to the approved field notes, and the survey, having been correctly executed in accordance with the requirements of law and the regulations of this Bureau, is hereby accepted.

For the Director

Bernard W. Holroyd
Chief, Division of Cadastral Survey



Latitude 38°56'10.1" N.
Longitude 114°56'37.4" W.