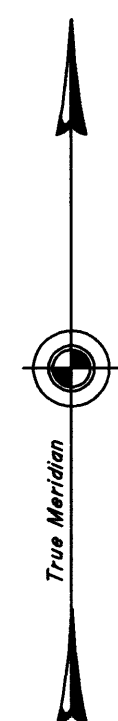


# TOWNSHIP 13 NORTH, RANGE 56 EAST, OF THE MOUNT DIABLO MERIDIAN, NEVADA

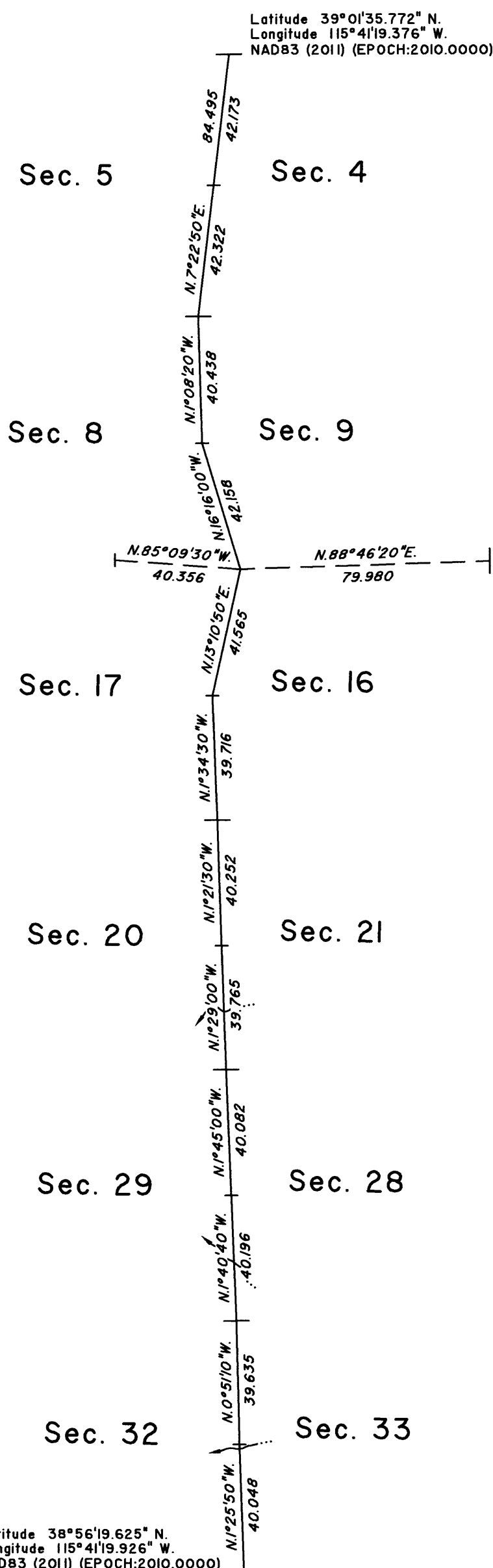
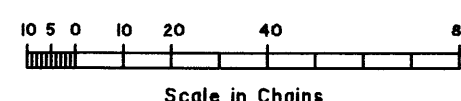
## DEPENDENT RESURVEY



Surveyed by  
E.B. Monroe  
in 1870

Resurveyed and Subdivided by  
T.O. Nickerson  
in 1976

Latitude 38°56'19.625" N.  
Longitude 115°41'19.926" W.  
NAD83 (2011) (EPOCH:2010.0000)



Surveyed by  
E.B. Monroe  
in 1870

A history of surveys is contained in the field notes.

This plat represents the dependent resurvey of a portion of the subdivisional lines, designed to restore the corners in their true original locations according to the best available evidence, Township 13 North, Range 56 East, Mount Diablo Meridian, Nevada.

Except as indicated hereon, the lottings and areas are as shown on the plat approved December 12, 1870 and the plat accepted December 31, 1979.

Survey executed by Justin V. Haddon, Cadastral Surveyor, beginning August 1, 2017 and completed October 4, 2019, pursuant to Special Instructions dated July 25, 2017, and Amended Special Instructions dated October 3, 2019 for Group No. 974, Nevada.

UNITED STATES DEPARTMENT OF THE INTERIOR  
BUREAU OF LAND MANAGEMENT

Reno, Nevada December 3, 2019

This plat is strictly conformable to the approved field notes, and the survey, having been correctly executed in accordance with the requirements of law and the regulations of this Bureau, is hereby accepted.

For the Director

*Michaelo Hamming*

Chief Cadastral Surveyor for Nevada