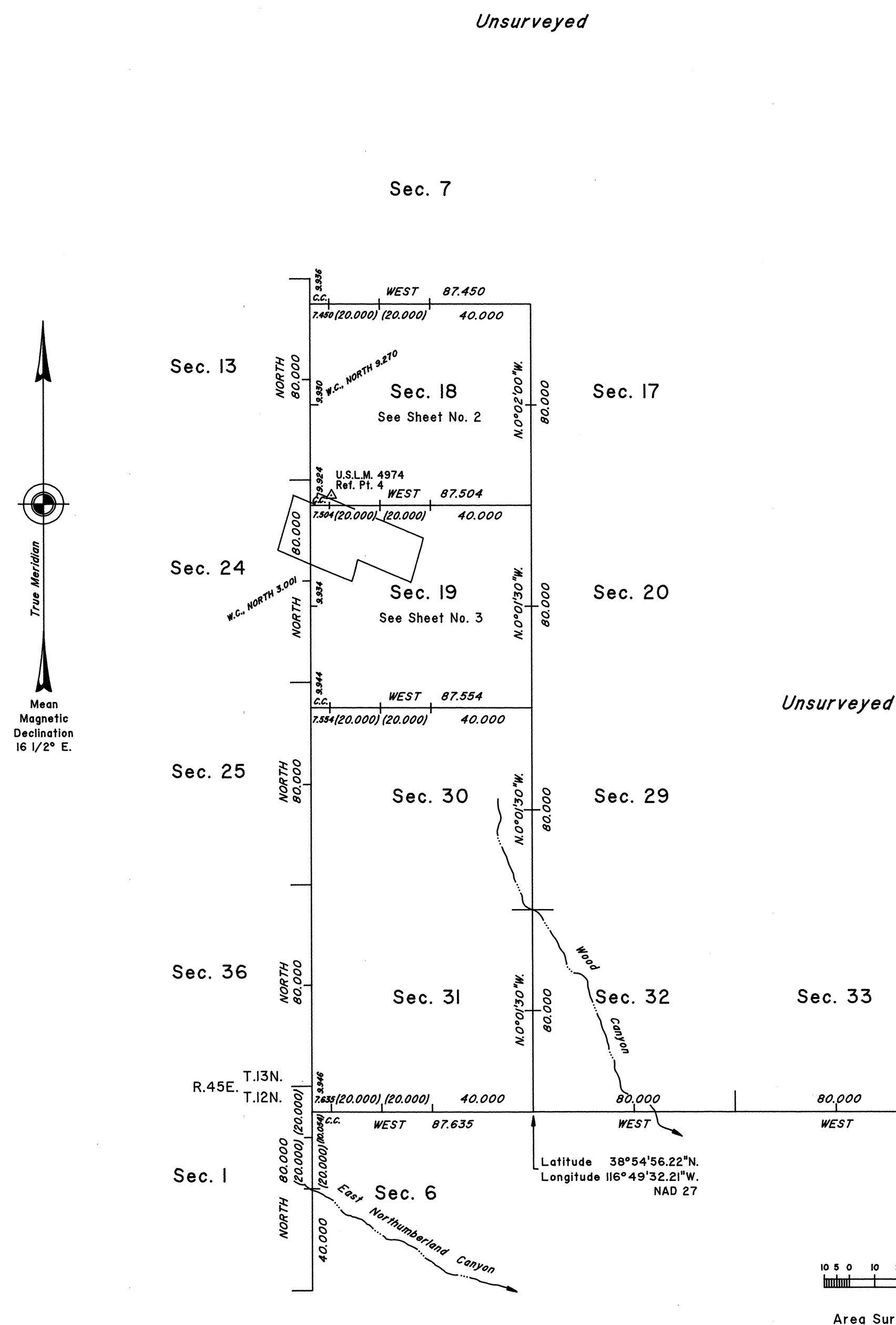


TOWNSHIP 13 NORTH, RANGE 46 EAST, OF THE MOUNT DIABLO MERIDIAN, NEVADA
DEPENDENT RESURVEY AND SURVEY

OFFICIALLY FILED
NEVADA STATE OFFICE
at 10:00 AM on MAY 3, 1993



History of the earlier surveys is contained in the field notes.

A survey of a portion of the east boundary of Tps. 12 and 13 N., Rs. 45 E. was executed concurrently under this Group.

This plat, in three sheets, represents a dependent resurvey of a portion of Mineral Survey No. 4974, designed to restore the corners in their true original locations according to the best available evidence; and the survey of a portion of the south boundary and a portion of the subdivisional lines of T. 13 N., R. 46 E., Mount Diablo Meridian, Nevada.

Survey executed by Brock R. Clifford, Cadastral Surveyor, beginning June 2, 1992 and completed November 23, 1992, under Special Instructions dated June 1, 1992 for Group No. 723, Nevada.

For enlargements of sections 18 and 19, see Sheet Nos. 2 and 3, respectively.

UNITED STATES DEPARTMENT OF THE INTERIOR
BUREAU OF LAND MANAGEMENT

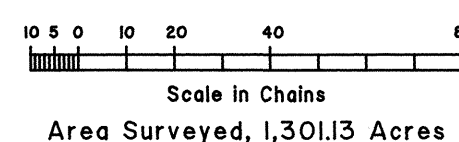
Reno, Nevada February 24, 1993

This plat is strictly conformable to the approved field notes, and the survey, having been correctly executed in accordance with the requirements of law and the regulations of this Bureau, is hereby accepted.

For the Director

John S. Panish

Chief Cadastral Surveyor, Nevada



B.M.G./R&J

T.13N., R.46E., M.D.M.