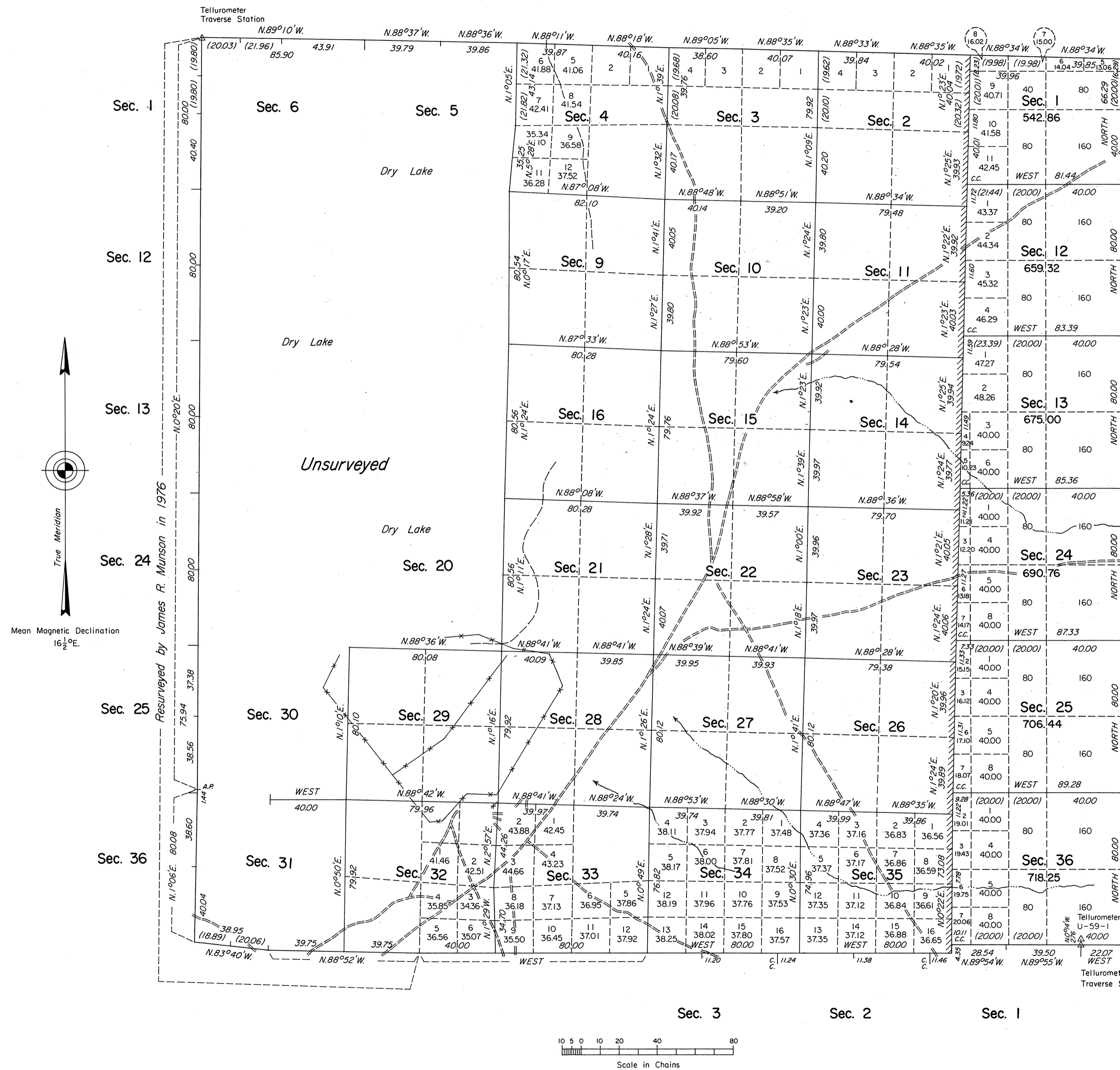


# TOWNSHIP 13 NORTH, RANGE 44 EAST, OF THE MOUNT DIABLO MERIDIAN, NEVADA

## DEPENDENT RESURVEY AND SURVEY



A history of surveys is contained in the field notes.

This plat represents the dependent resurvey of the north boundary, a portion of the south boundary and a portion of the subdivisional lines, T. 13 N., R. 44 E., and the north boundary of section 1, T. 12 N., R. 44 E., designed to restore the corners in their true original locations according to the best available evidence; and the survey of the east boundary, a portion of the south boundary and a portion of the subdivisional lines, T. 13 N., R. 44 E., Mount Diablo Meridian, Nevada.

Except as indicated hereon, the lottings and areas are as shown on the plat approved December 27, 1873.

Survey executed by Robert A. Pratt, Cadastral Surveyor, beginning October 28, 1977, and completed April 13, 1978, pursuant to Special Instructions dated September 21, 1977, for Group No. 556, Nevada.

UNITED STATES DEPARTMENT OF THE INTERIOR  
BUREAU OF LAND MANAGEMENT  
Denver, Colorado July 8, 1980

This plat is strictly conformable to the approved field notes, and the survey, having been correctly executed in accordance with the requirements of law and the regulations of this Bureau, is hereby accepted.

For the Director

Chief, Cadastral Survey  
Examination and Approval Staff

Traverse Station  
U-59-1  
Latitude  $38^{\circ} 56' 12.8'' N.$   
Longitude  $116^{\circ} 58' 28.8'' W.$

Traverse Station

