

ORIGINAL

730 AM. January 19, 1981

OFFICIALLY FILED  
NEVADA STATE OFFICE

# TOWNSHIP 13 NORTH, RANGE 41 EAST, OF THE MOUNT DIABLO MERIDIAN, NEVADA

## DEPENDENT RESURVEY AND SUBDIVISION

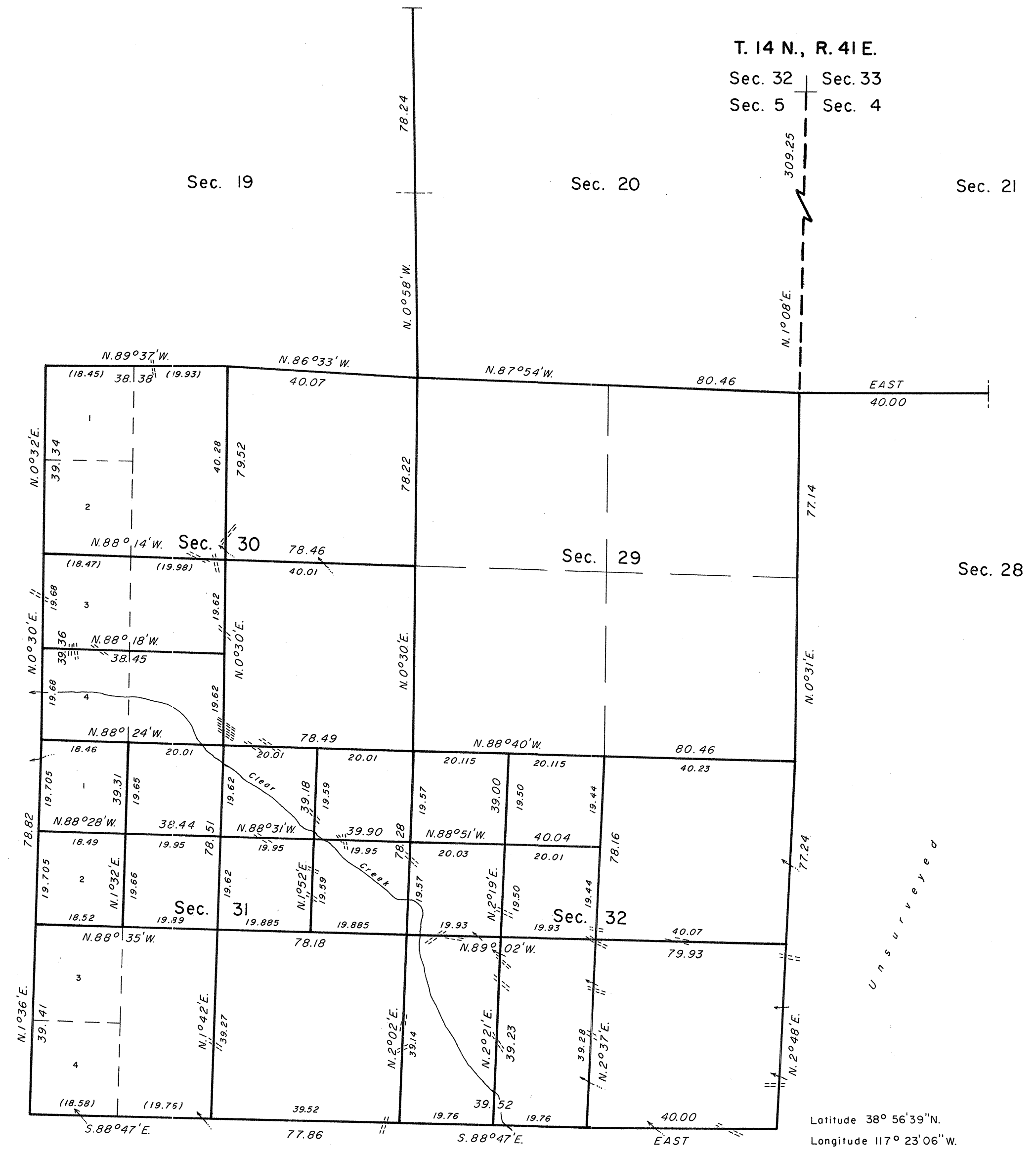
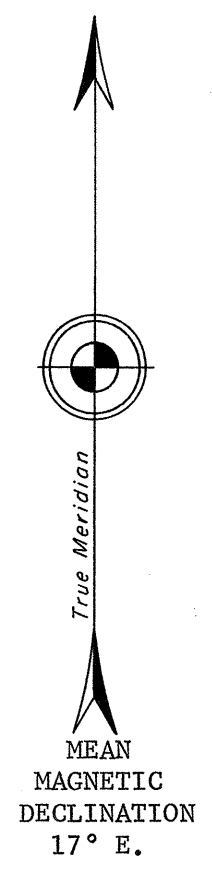
T. 14 N., R. 41 E.  
Sec. 32 | Sec. 33  
Sec. 5 | Sec. 4

A history of surveys is contained in the field notes.

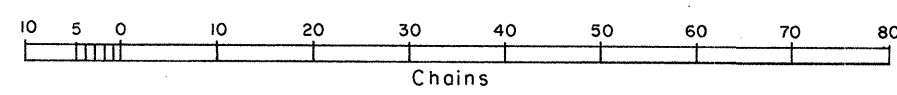
This plat represents the dependent resurvey of portions of the south and west boundaries and subdivisional lines, designed to restore the corners in their true original locations according to the best available evidence, and the subdivision of sections 30, 31, and 32, T. 13 N., R. 41 E., Mount Diablo Meridian, Nevada.

The lottings and areas are as shown on the plat approved September 8, 1873.

Survey executed by Stephen D. Hardin, Cadastral Surveyor, beginning July 21, 1975, and completed April 14, 1977, pursuant to Special Instructions dated June 18, 1975, for Group No. 528, Nevada.



Latitude 38° 56' 39" N.  
Longitude 117° 23' 06" W.



UNITED STATES DEPARTMENT OF THE INTERIOR  
BUREAU OF LAND MANAGEMENT  
Denver, Colorado December 30, 1980

This plat is strictly conformable to the approved field notes, and the survey, having been correctly executed in accordance with the requirements of law and the regulations of this Bureau, is hereby accepted.

For the Director

Chief, Cadastral Survey  
Examination and Approval Staff

lp

ak