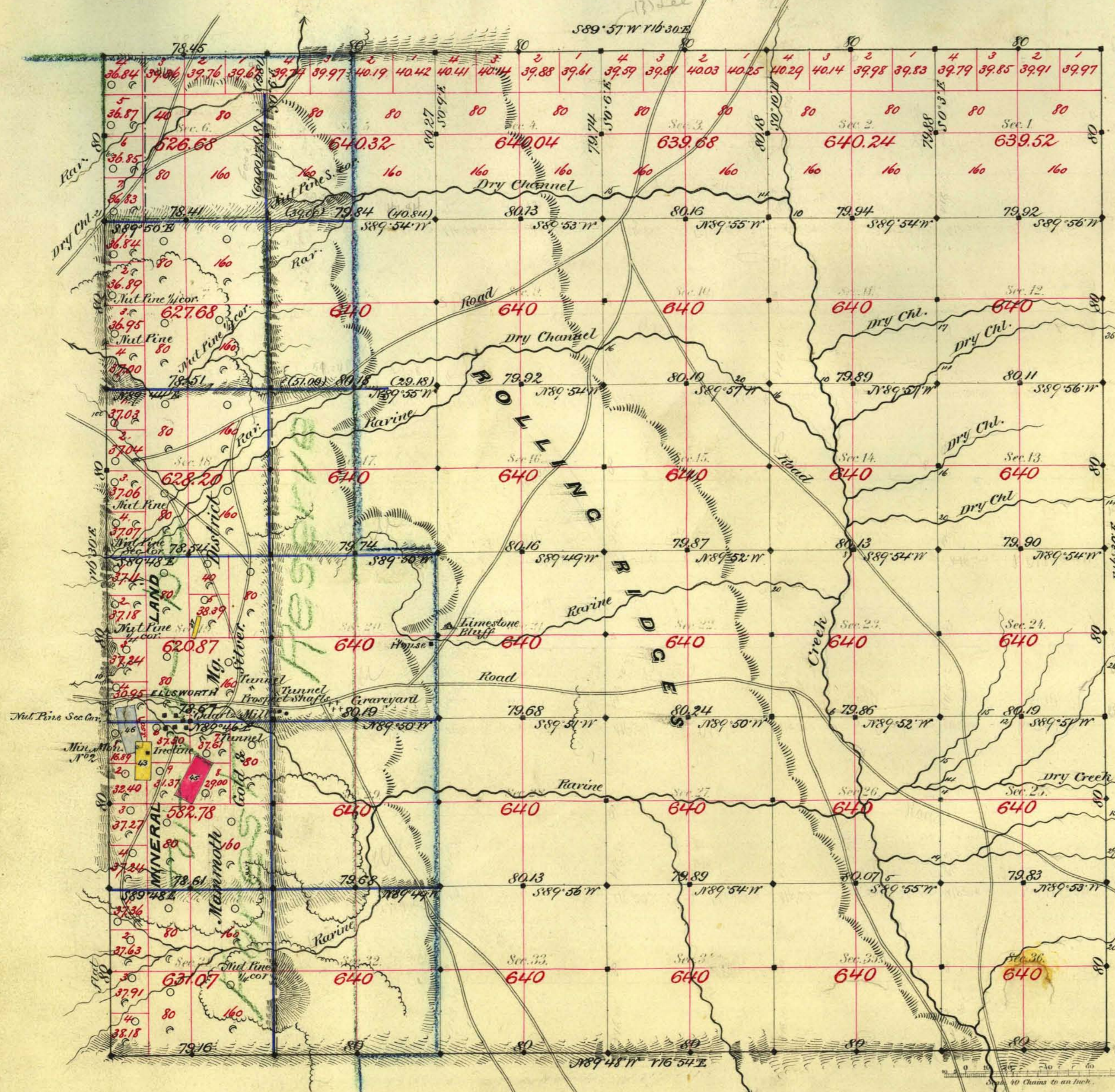


TOWNSHIP N<sup>o</sup> 13 NORTH RANGE N<sup>o</sup> 38 EAST MOUNT DIABLO MERIDIAN



| N <sup>o</sup> | Claim                         | Lode                           | Acres | Approval                   |
|----------------|-------------------------------|--------------------------------|-------|----------------------------|
| 37             | Oral S.M.C <sup>o</sup>       | Gould & Curry N <sup>o</sup> 1 | 1.60  | June 3 <sup>rd</sup> 1870  |
| 43             | Esta Buena S.M.C <sup>o</sup> | Esta Buena                     | 13.76 | July 1 <sup>st</sup> 1880  |
| 45             | Coodrich & Inapp              | Hobinson                       | 20.66 | Feb. 15 <sup>th</sup> 1882 |
| 46             | Silver Ware M.C <sup>o</sup>  | Silver Ware                    | 18.29 | June 19 <sup>th</sup> "    |

Aggregate Area of Public Land Surveyed 19826.48 Acres  
 Mineral " 3144.91 "  
 Aggregate 22971.39 "

Commenced May 4<sup>th</sup> 1883  
 Completed " 11<sup>th</sup> "

Lat. 38°55'N?  
 Subdivisions run with a Variation of 16°30' East

| Survey Designated | By Whom Surveyed  | Date of Contract          | Amount of Survey | When Surveyed | 7 <sup>th</sup> Cor. |
|-------------------|-------------------|---------------------------|------------------|---------------|----------------------|
| S. Boundary       | Hewitt & Parin    | Nov. 2 <sup>nd</sup> 1880 | 5-79-76          | 1881          | 104                  |
| N. & W.           | Hewitt & Morrison | Nov. 2 <sup>nd</sup> 1883 | 17-78-45         | 1883          | 164                  |
| Subdiv. black     | "                 | "                         | 45-10-02         | May "         | "                    |
| " blue            | "                 | "                         | 14-62-35         | " "           | "                    |

The above Map of Township N<sup>o</sup> 13 North of Range N<sup>o</sup> 38 East Mt. Diablo Meridian is strictly conformable to the field notes of the survey thereof on file in this Office, which have been examined and approved.

Surveyor General's Office. } L. C. Panning, Sur. Gen.  
 Reno Nevada }  
 June 14<sup>th</sup> 1883

A. L. Hancock & Co. Eng. S. F.