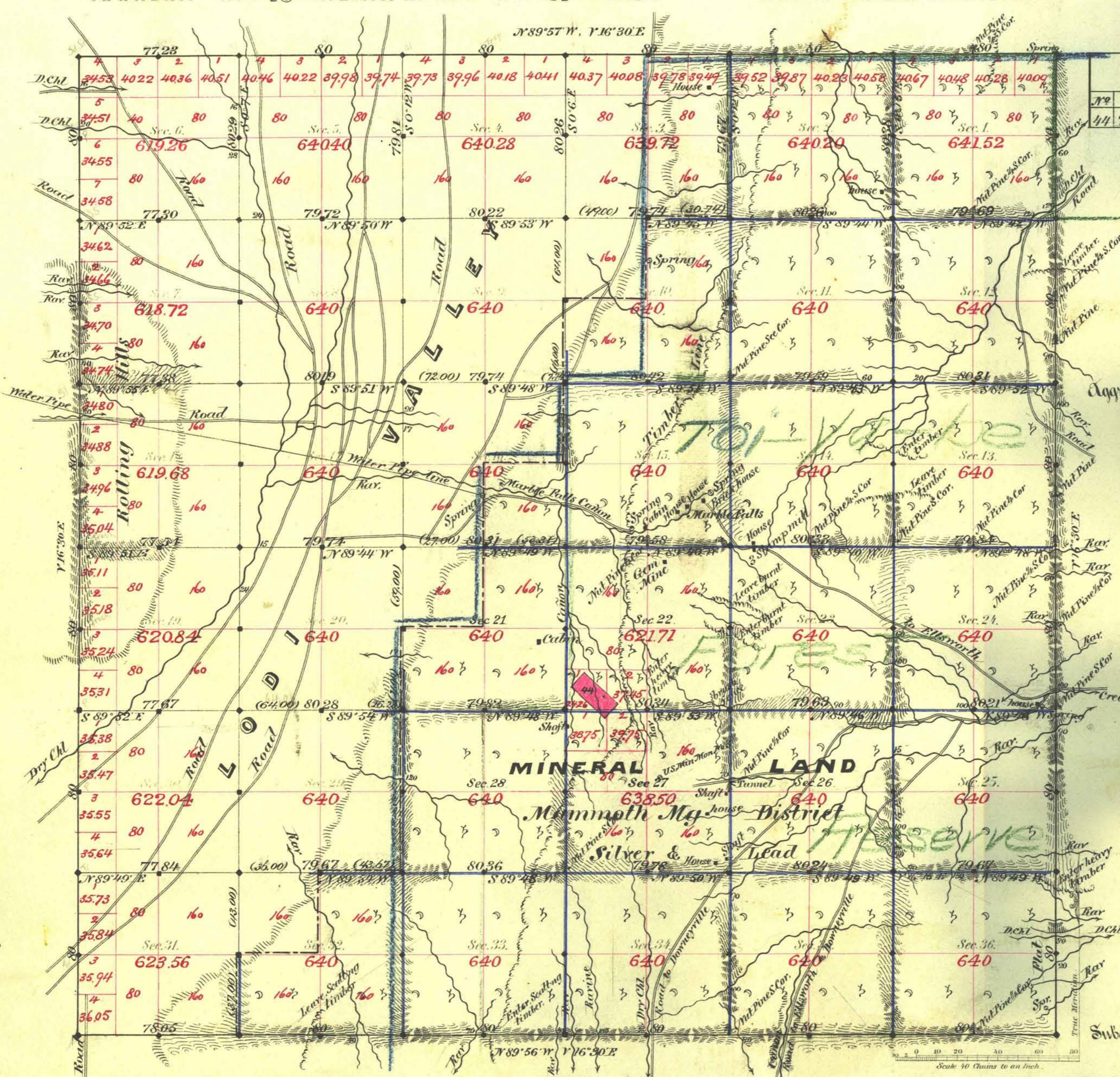


TOWNSHIP N<sup>o</sup> 13 NORTH RANGE N<sup>o</sup> 37 EAST

MOUNT DIABLO MERIDIAN

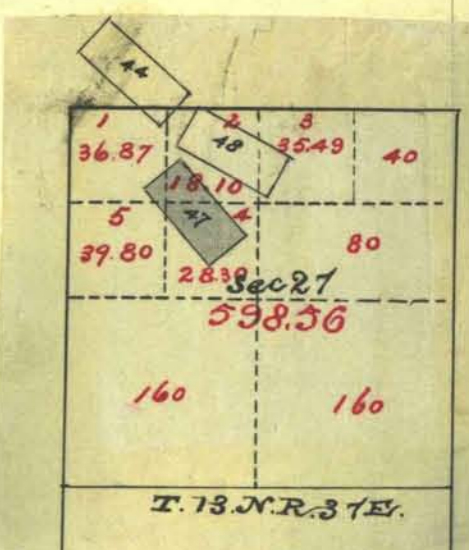


Mammoth Mining District			
No	Claim	Loote	Acres
44	T. Morales + B. Croees	Piora	19.79

Approved Sept 6<sup>th</sup> 1881  
For change in plat see letter of Dec 1876

Aggregate Area of Public Land Surveyed	9804.50 Acres
" " Mineral "	13101.93 "
Aggregate	22906.43 "

Commenced May 11<sup>th</sup> 1883  
Completed " 19<sup>th</sup> "



Survey Designated	By Whom Surveyed	Date of Contract	Amount of Survey	When Surveyed	No. Cor.
Township lines	Stewart Morrison	Mar 21 <sup>st</sup> 1883	23-75-83	1883	164
Subdiv <sup>ns</sup> black	"	"	23-81-98	May	"
blue	"	"	36-65-86	"	"

The above Map of Township N<sup>o</sup> 13 North of Range N<sup>o</sup> 37 East of Mt Diablo Meridian is strictly conformable to the field notes of the survey thereof on file in this Office, which have been examined and approved.

Surveyor General's Office, }  
Reno Nevada }  
June 14<sup>th</sup> 1883 }  
L. C. Downing, Sur. Gen. Nevada

Subdivisions not noted run with a Var. of 16' 30" East