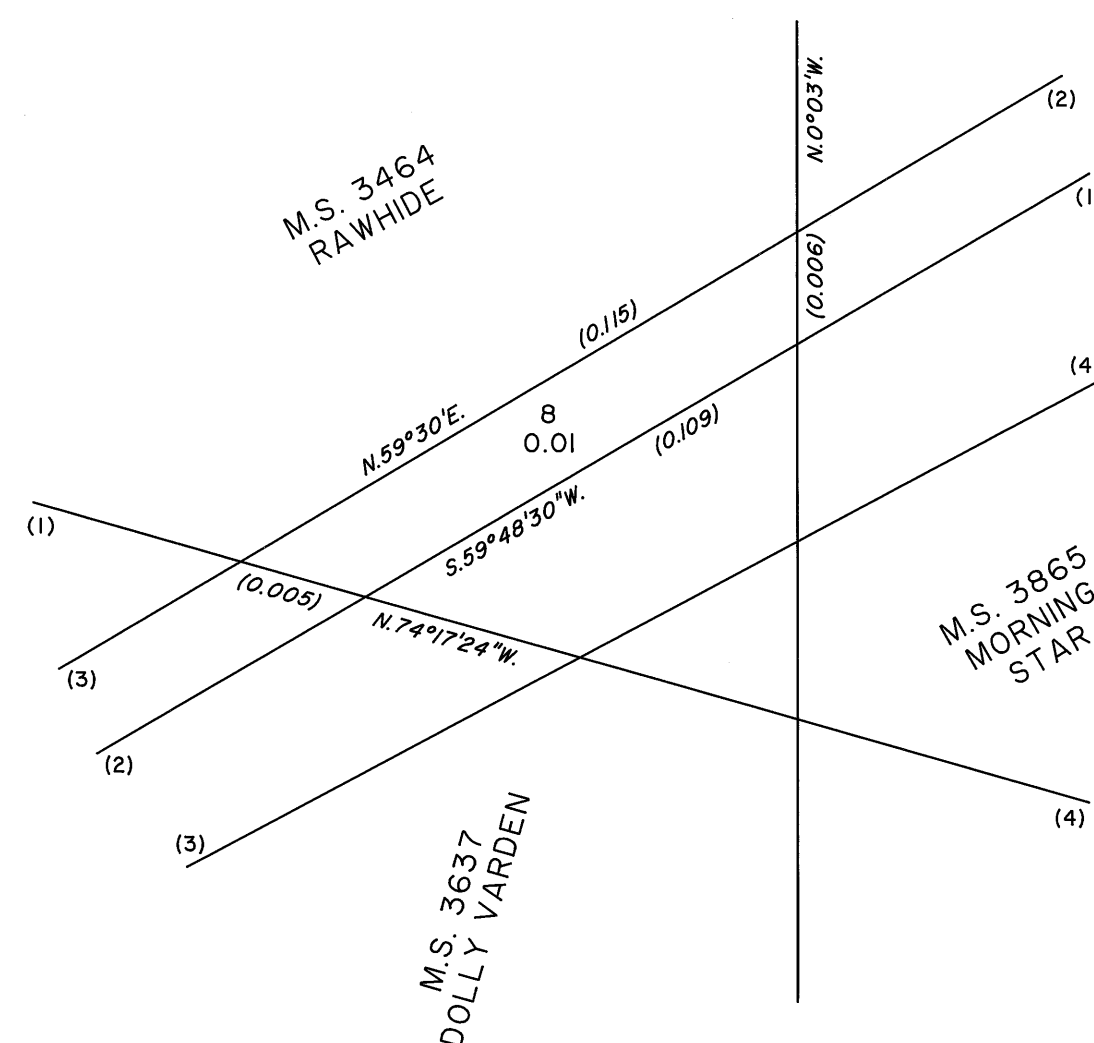


TOWNSHIP 13 NORTH, RANGE 32 EAST, OF THE MOUNT DIABLO MERIDIAN, NEVADA

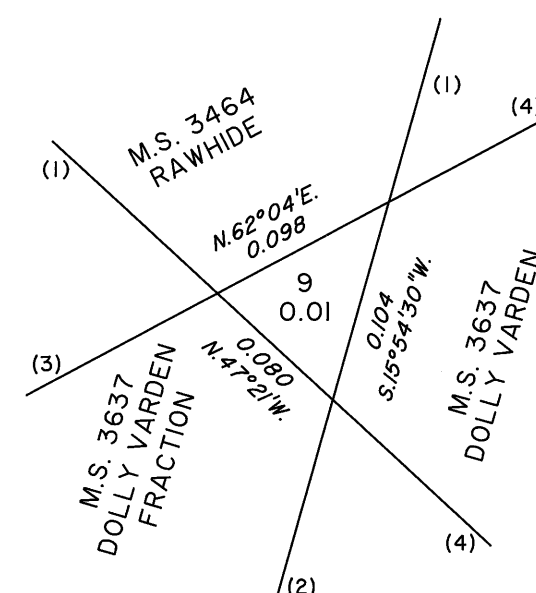
SUPPLEMENTAL PLAT DETAILS OF SECTION 8

OFFICIALLY FILED
NEVADA STATE OFFICE
at 10:00 AM on June 11, 2008

DETAIL A
Not to Scale

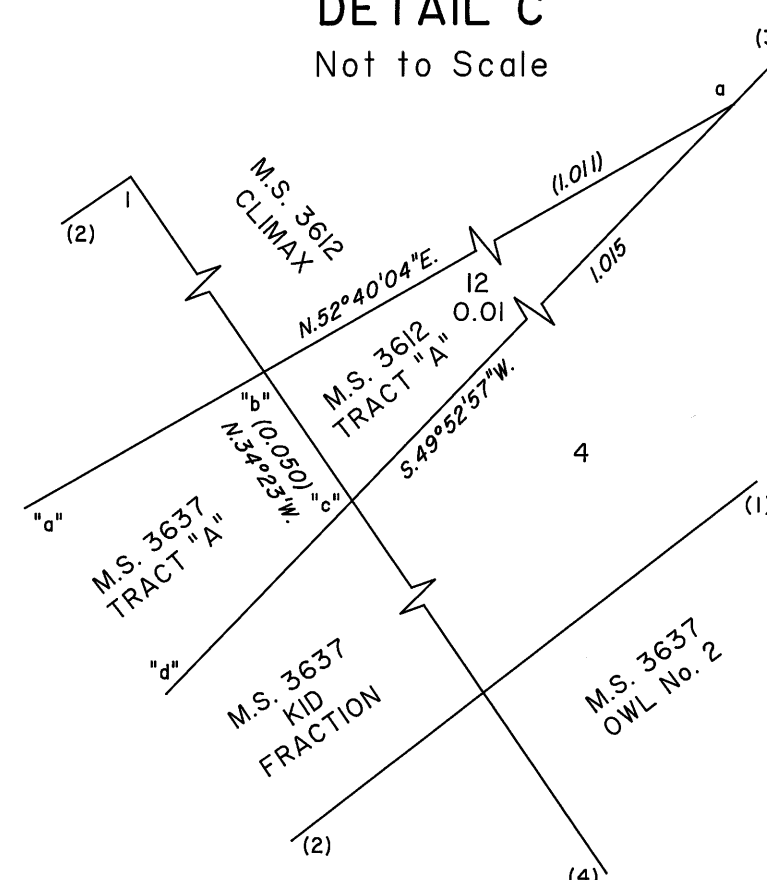


DETAIL B
Not to Scale

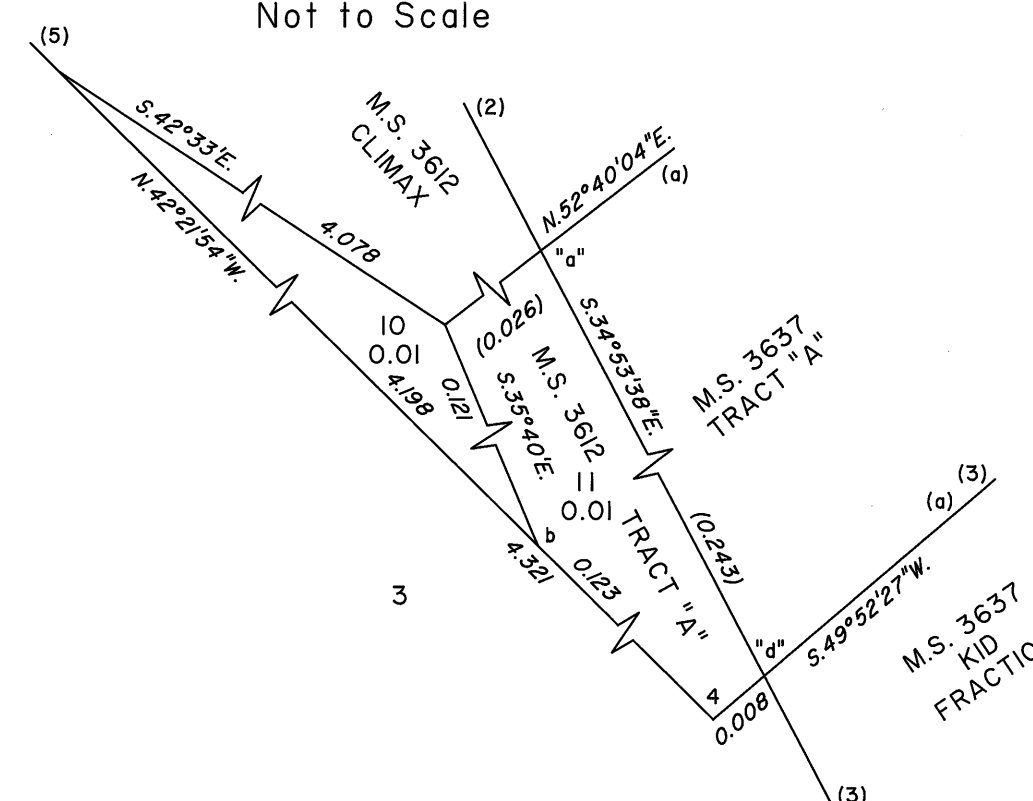


Reference should be made to Sheet No. 1 for survey information.

DETAIL C
Not to Scale



DETAIL D
Not to Scale



UNITED STATES DEPARTMENT OF THE INTERIOR
BUREAU OF LAND MANAGEMENT

Reno, Nevada June 9, 2008

This plat, showing amended lottings, is based upon the official records, and having been correctly prepared in accordance with the regulations of this Bureau, is hereby accepted.

For the Director

David D. Spelman

Chief Cadastral Surveyor, Nevada