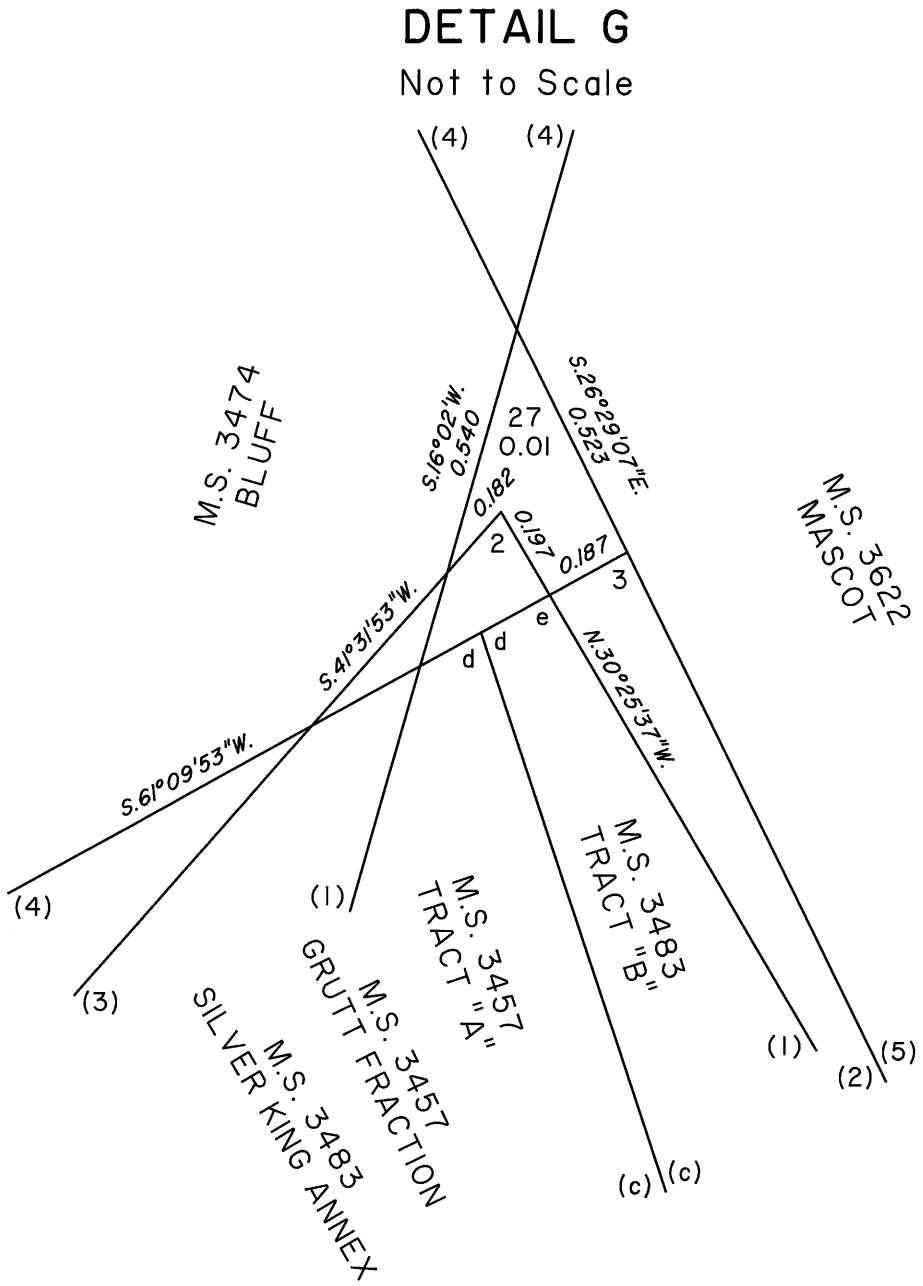
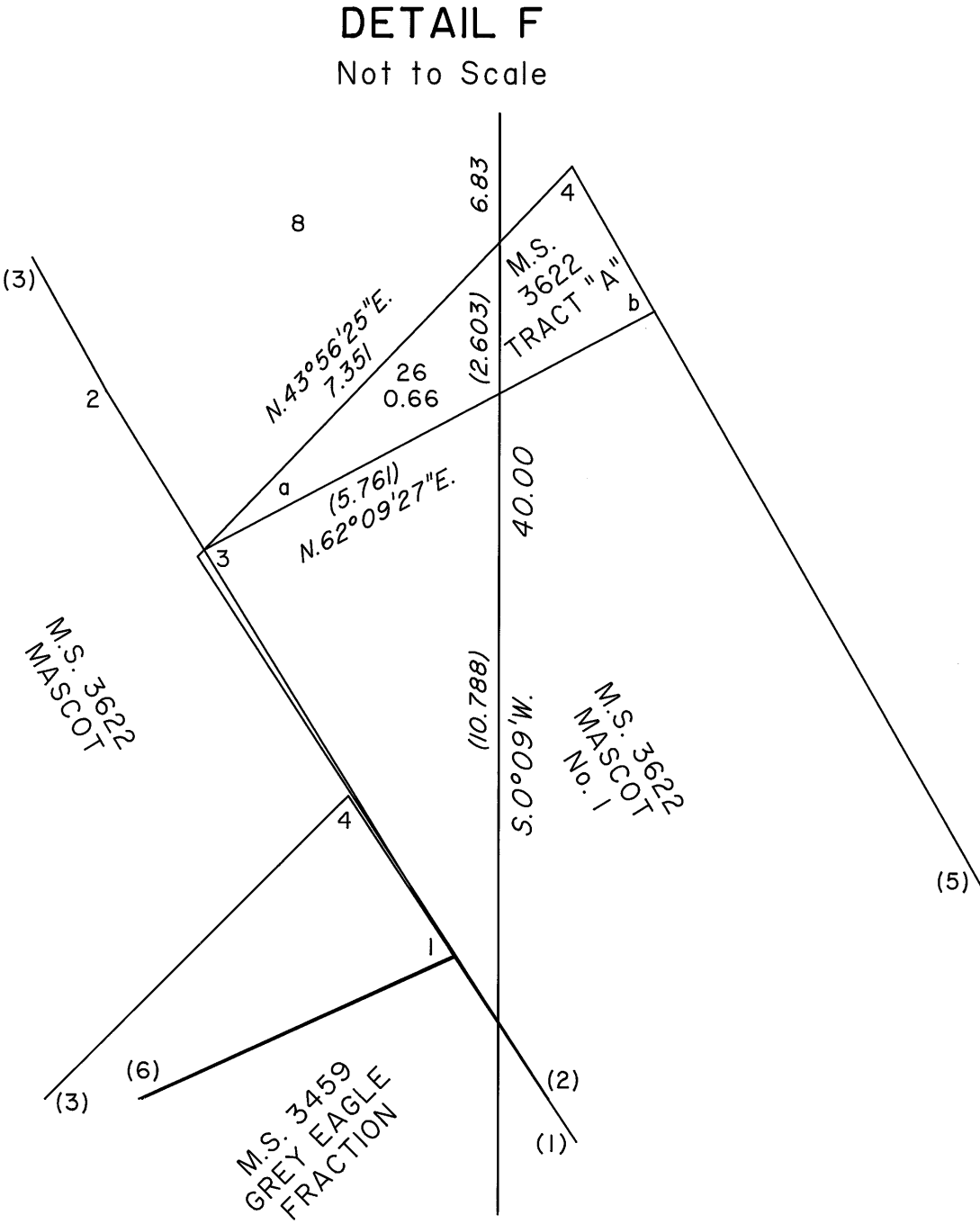
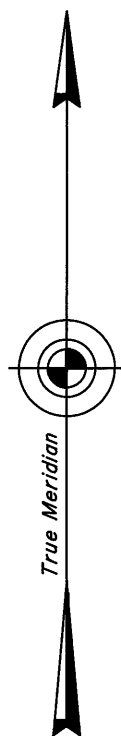
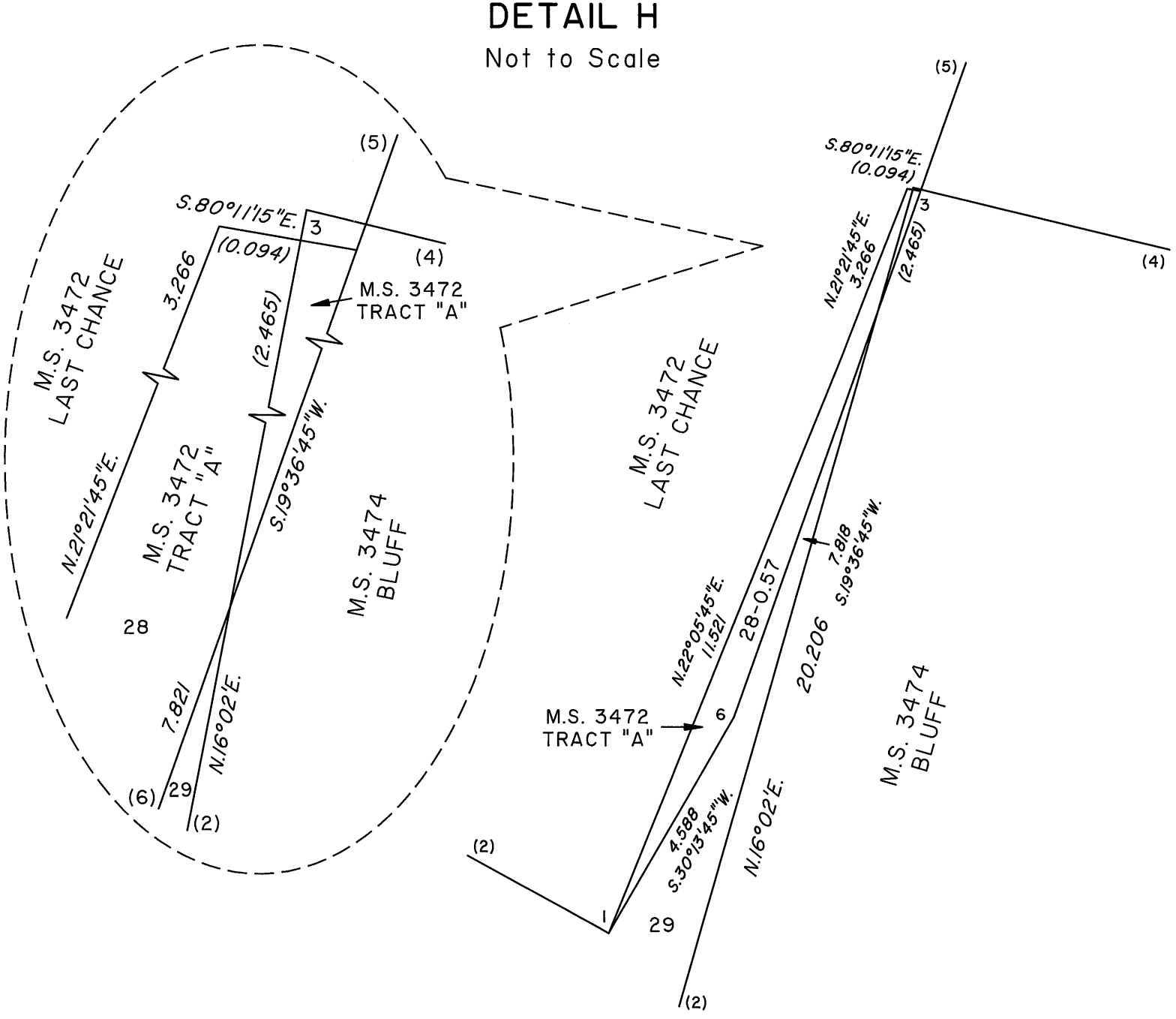


TOWNSHIP 13 NORTH, RANGE 32 EAST, OF THE MOUNT DIABLO MERIDIAN, NEVADA  
SUPPLEMENTAL PLAT DETAILS OF SECTION 5

OFFICIALLY FILED  
NEVADA STATE OFFICE  
at 10:00 AM on June 11, 2008



Reference should be made to Sheet No. 1 for survey information.



UNITED STATES DEPARTMENT OF THE INTERIOR  
BUREAU OF LAND MANAGEMENT

Reno, Nevada June 9, 2008

This plat, showing amended lottings, is based upon the official records, and having been correctly prepared in accordance with the regulations of this Bureau, is hereby accepted.

For the Director

Chief Cadastral Surveyor, Nevada