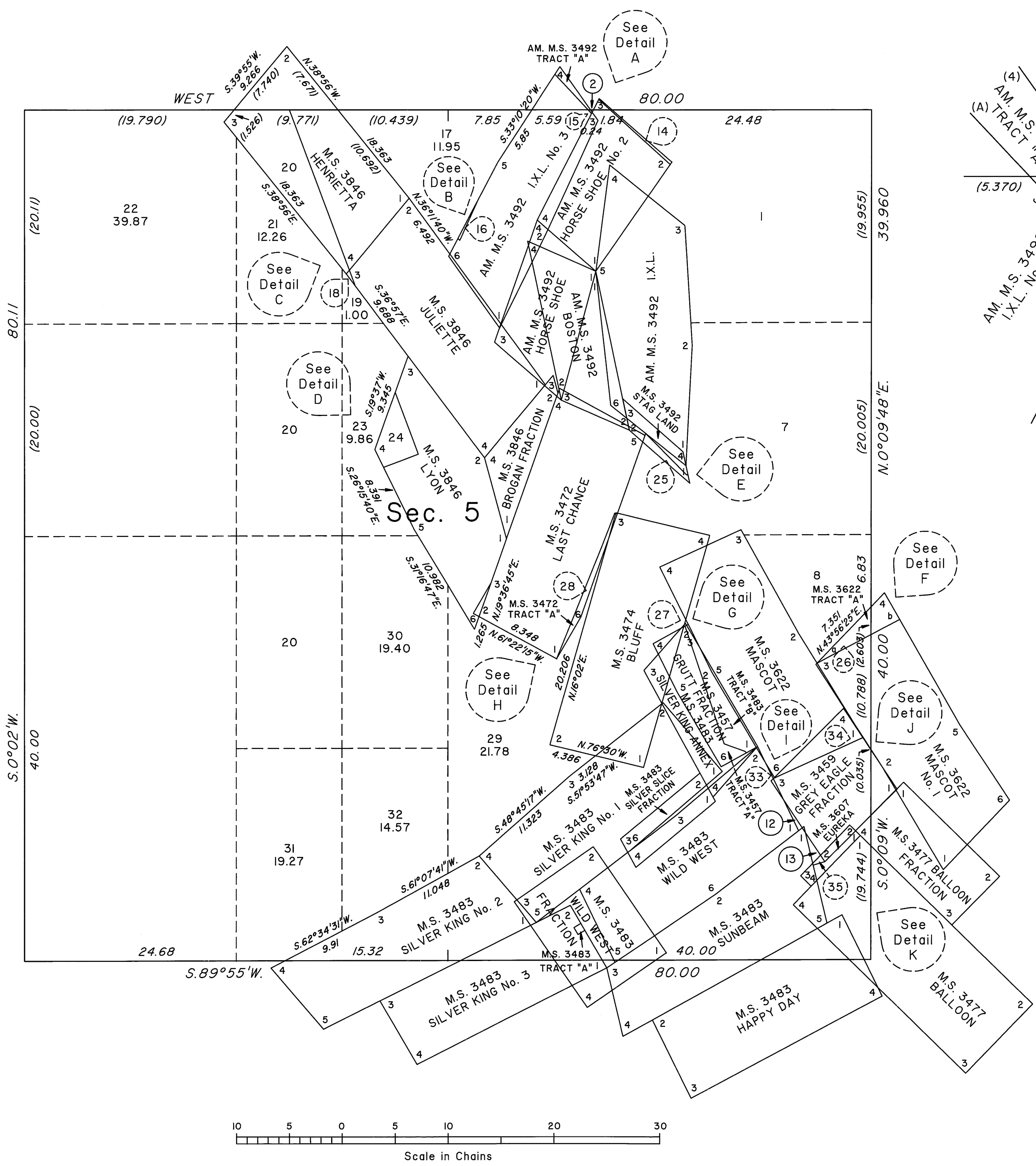
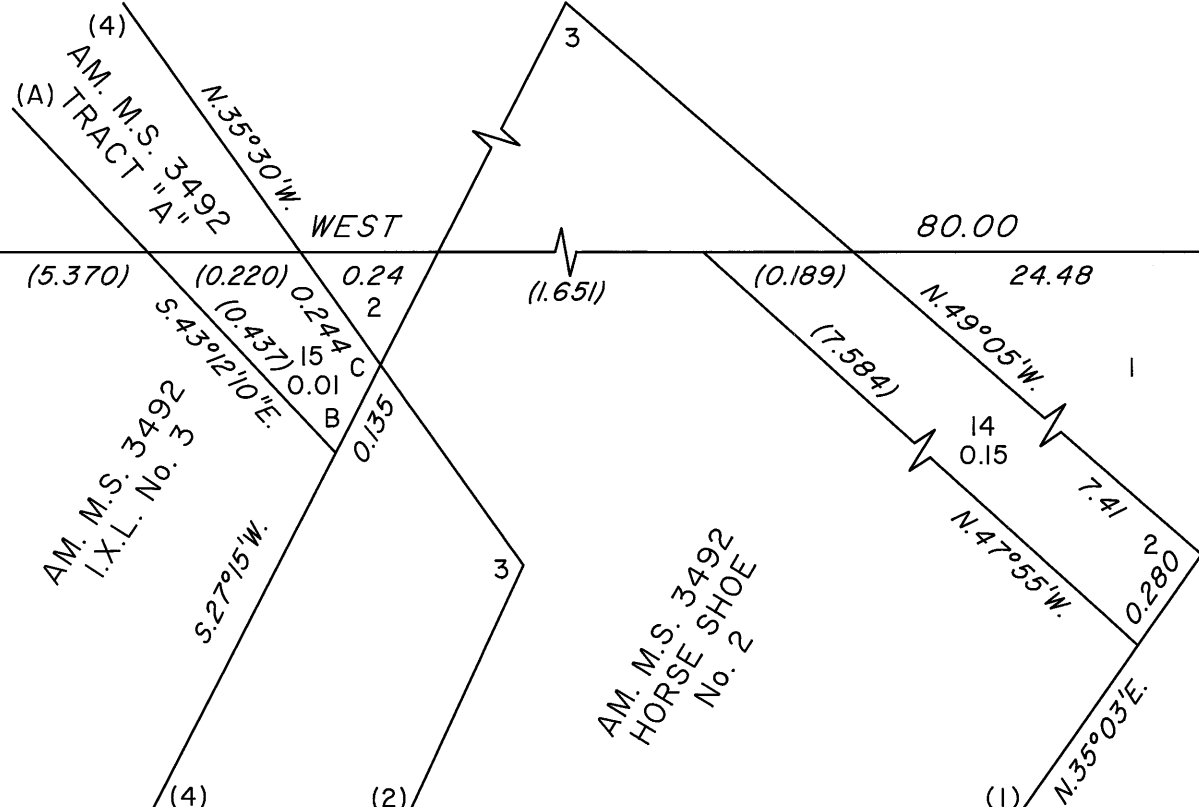


TOWNSHIP 13 NORTH, RANGE 32 EAST, OF THE MOUNT DIABLO MERIDIAN, NEVADA
SUPPLEMENTAL PLAT OF SECTION 5



DETAIL A
Not to Scale



This plat, in four sheets, showing amended lottings created by the segregation of the GRUTT FRACTION lode of Mineral Survey No. 3457; the GREY EAGLE FRACTION lode of Mineral Survey No. 3459; the LAST CHANCE lode of Mineral Survey No. 3474; the BLUFF lode of Mineral Survey No. 3474; the Red Top Fraction lode of cancelled Mineral Survey No. 3478; the SUNBEAM lode, WILD WEST lode, SILVER KING No. 1 lode, SILVER KING No. 2 lode and SILVER KING ANNEX lode of Mineral Survey No. 3483; the I.X.L. No. 3 lode, STAG LAND lode and HORSE SHOE No. 2 lode of Amended Mineral Survey No. 3492; the Molecule Fraction lode of cancelled Mineral Survey No. 3572; the March No. 1 lode, Valley No. 1 lode, Valley No. 3 lode, Valley No. 5 lode and Valley No. 7 lode of cancelled Mineral Survey No. 3597; the EUREKA lode of Mineral Survey No. 3607; the MASCOT lode and MASCOT No. 1 lode of Mineral Survey No. 3622; and the HENRIETTA lode, JULIETTE lode and LYON lode of Mineral Survey No. 3846 in sec. 5, T. 13 N., R. 32 E., Mount Diablo Meridian, Nevada, is based on the plat in two sheets approved June 22, 1944 and accepted June 30, 1944, and the mineral survey records.

See Sheet No. 2 for Details B through E.
See Sheet No. 3 for Details F through H.
See Sheet No. 4 for Details I through K.

UNITED STATES DEPARTMENT OF THE INTERIOR
BUREAU OF LAND MANAGEMENT

Reno, Nevada June 9, 2008

This plat, showing amended lottings, is based upon the official records, and having been correctly prepared in accordance with the regulations of this Bureau, is hereby accepted.

For the Director

Chief Cadastral Surveyor, Nevada