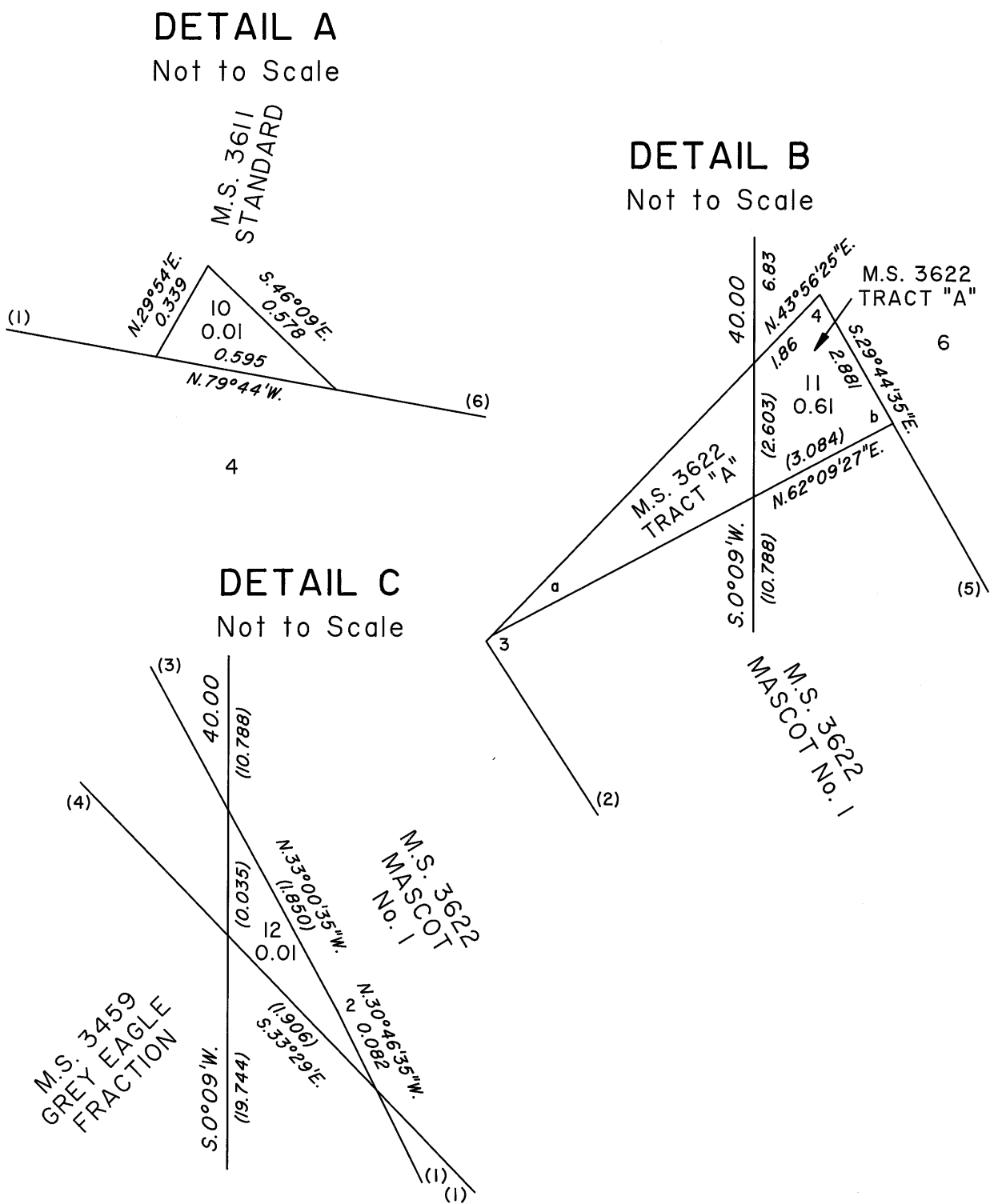
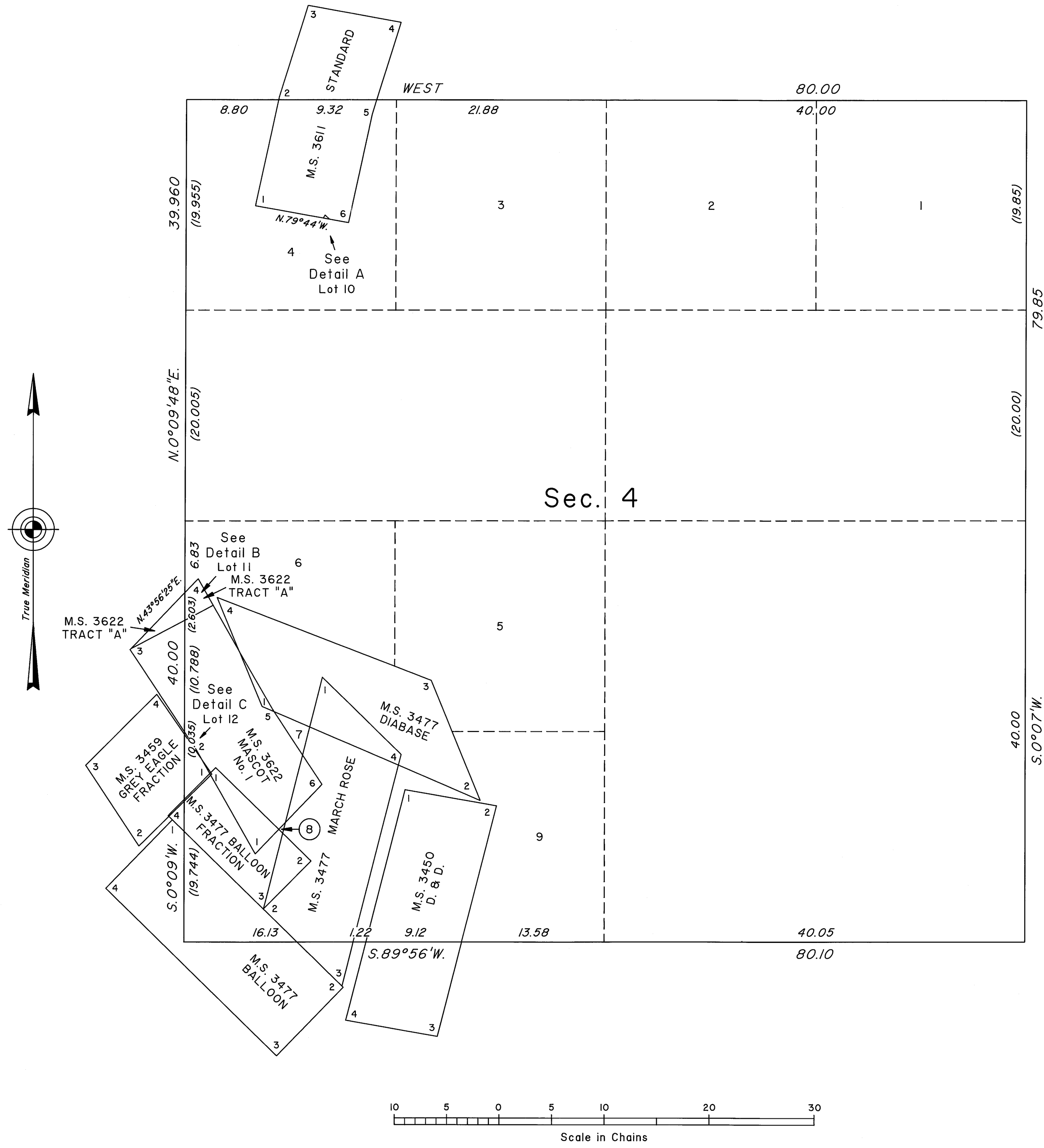


TOWNSHIP 13 NORTH, RANGE 32 EAST, OF THE MOUNT DIABLO MERIDIAN, NEVADA
SUPPLEMENTAL PLAT OF SECTION 4



This plat, showing amended lottings created by the segregation of the GREY EAGLE FRACTION lode of Mineral Survey No. 3459; the STANDARD lode of Mineral Survey No. 3611; the MASCOT No. 1 lode of Mineral Survey No. 3622; and the Crystal Queen No. 2 lode of cancelled Mineral Survey No. 3676 in sec. 4, T. 13 N., R. 32 E., Mount Diablo Meridian, Nevada, is based on the plat in two sheets and field notes approved June 22, 1944 and accepted June 30, 1944, and the mineral survey records.

UNITED STATES DEPARTMENT OF THE INTERIOR
BUREAU OF LAND MANAGEMENT

Reno, Nevada June 9, 2008

This plat, showing amended lottings, is based upon the official records, and having been correctly prepared in accordance with the regulations of this Bureau, is hereby accepted.

For the Director

David A. York

Chief Cadastral Surveyor, Nevada