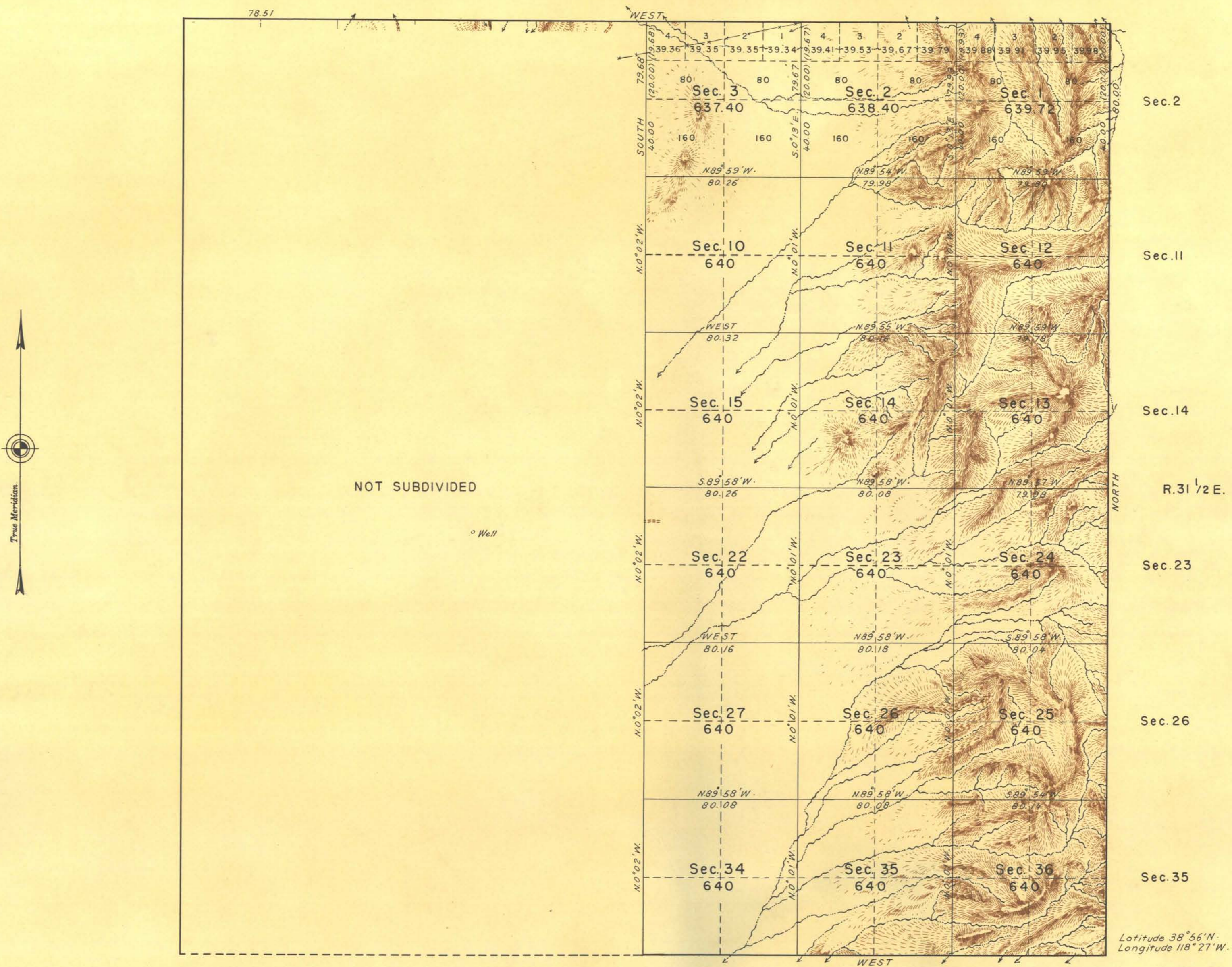


TOWNSHIP N^o 13 NORTH, RANGE N^o 31 EAST, OF THE MOUNT DIABLO MERIDIAN, NEVADA.



Scale: 1 inch=40 chains

Area surveyed 11,515.52 acres

LINES DESIGNATED	BY WHOM SURVEYED	GROUP NO.	DATE OF SPECIAL INSTRUCTIONS	WHEN SURVEYED	
				BEGUN	COMPLETED
Exterior, E. & N. Subdivisional	Carl S. Swanholm Robert F. Guinn Sam Ackerman Conrad Pettingill	181	December 20, 1933	Nov. 20, 1936	Apr. 26, 1937

UNITED STATES DEPARTMENT OF THE INTERIOR
BUREAU OF LAND MANAGEMENT

Denver, Colorado, November 1, 1946.

This plat is strictly conformable to the field notes of the survey which have been examined and approved.

Washington, D. C., July 11, 1947

The survey represented by this plat, having been correctly executed in accordance with the requirements of law and the regulations of this office, is hereby accepted.

C. Antonio Jr.
Acting Chief Cadastral Engineer.

W. H. Staveland
Assistant Director

0797

T. 13 N., R. 31 E.