

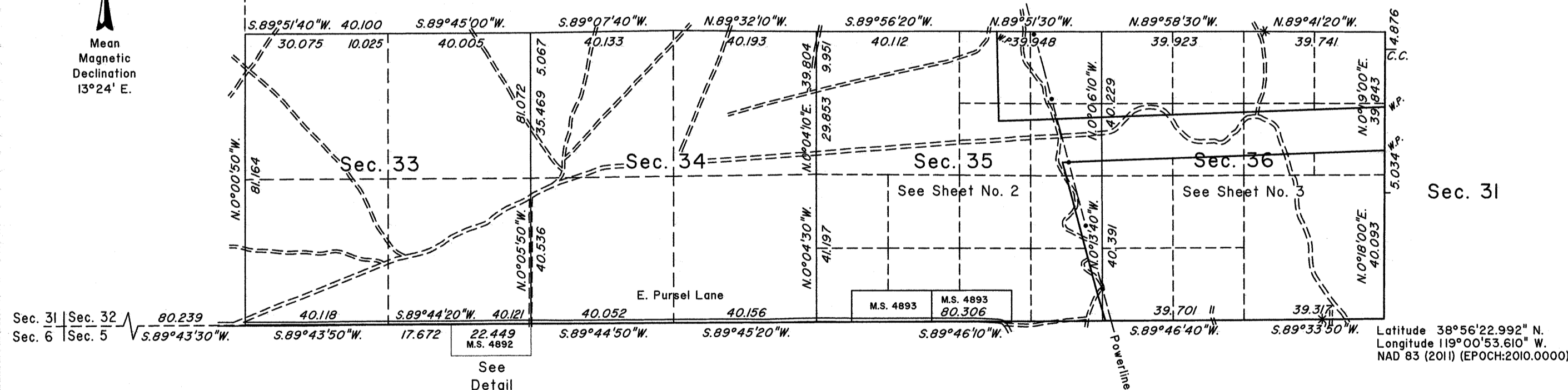
TOWNSHIP 13 NORTH, RANGE 26 EAST, OF THE MOUNT DIABLO MERIDIAN, NEVADA

DEPENDENT RESURVEY AND METES-AND-BOUNDS SURVEY

OFFICIALLY FILED
NEVADA STATE OFFICE
at 10:00 AM on JUN 25 2015



Latitude 38°57'14.952" N.
Longitude 119°05'20.666" W.
NAD 83 (2011) (EPOCH:2010.0000)



Latitude 38°56'22.992" N.
Longitude 119°00'53.610" W.
NAD 83 (2011) (EPOCH:2010.0000)

A history of surveys is contained in the field notes.

A dependent resurvey of a portion of the east boundary was executed concurrently under this same Group.

This plat, in three sheets, represents the dependent resurvey of a portion of the south boundary, a portion of the subdivisional lines and portions of Mineral Survey Nos. 4892 and 4893 designed to restore the corners in their true original locations according to the best available evidence and a metes-and-bounds survey in sections 35 and 36, Township 13 North, Range 26 East, Mount Diablo Meridian, Nevada.

Except as indicated hereon, the lottings and areas are as shown on the plat approved May 19, 1869 and the plat approved September 7, 1915.

Survey executed by Brandon K. Grace, Cadastral Surveyor, beginning March 1, 2015 and completed March 27, 2015, pursuant to Special Instructions dated February 24, 2015, Supplemental Special Instructions dated February 27, 2015 and Supplemental Special Instructions dated March 24, 2015, for Group No. 941, Nevada.

UNITED STATES DEPARTMENT OF THE INTERIOR
BUREAU OF LAND MANAGEMENT

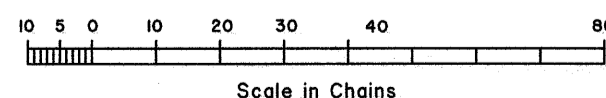
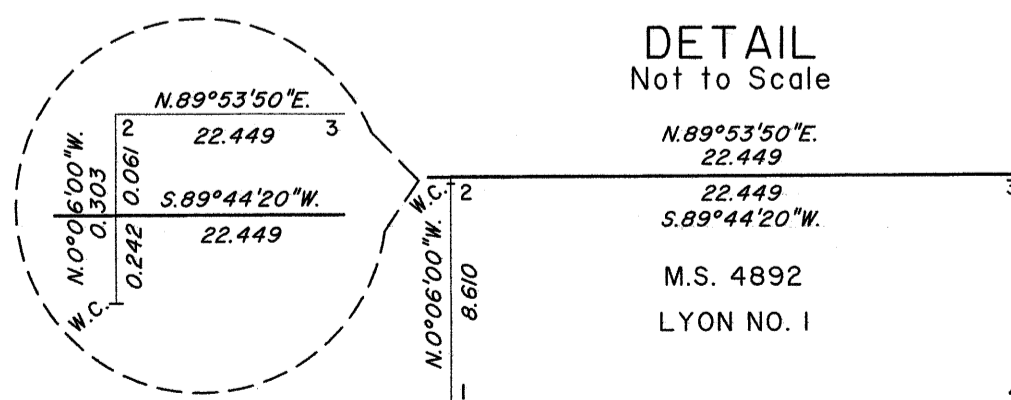
Reno, Nevada June 12, 2015

This plat is strictly conformable to the approved field notes and the survey, having been correctly executed in accordance with the requirements of law and the regulations of this Bureau is hereby accepted.

For the Director

Chief Cadastral Surveyor for Nevada

DETAIL Not to Scale



CWM