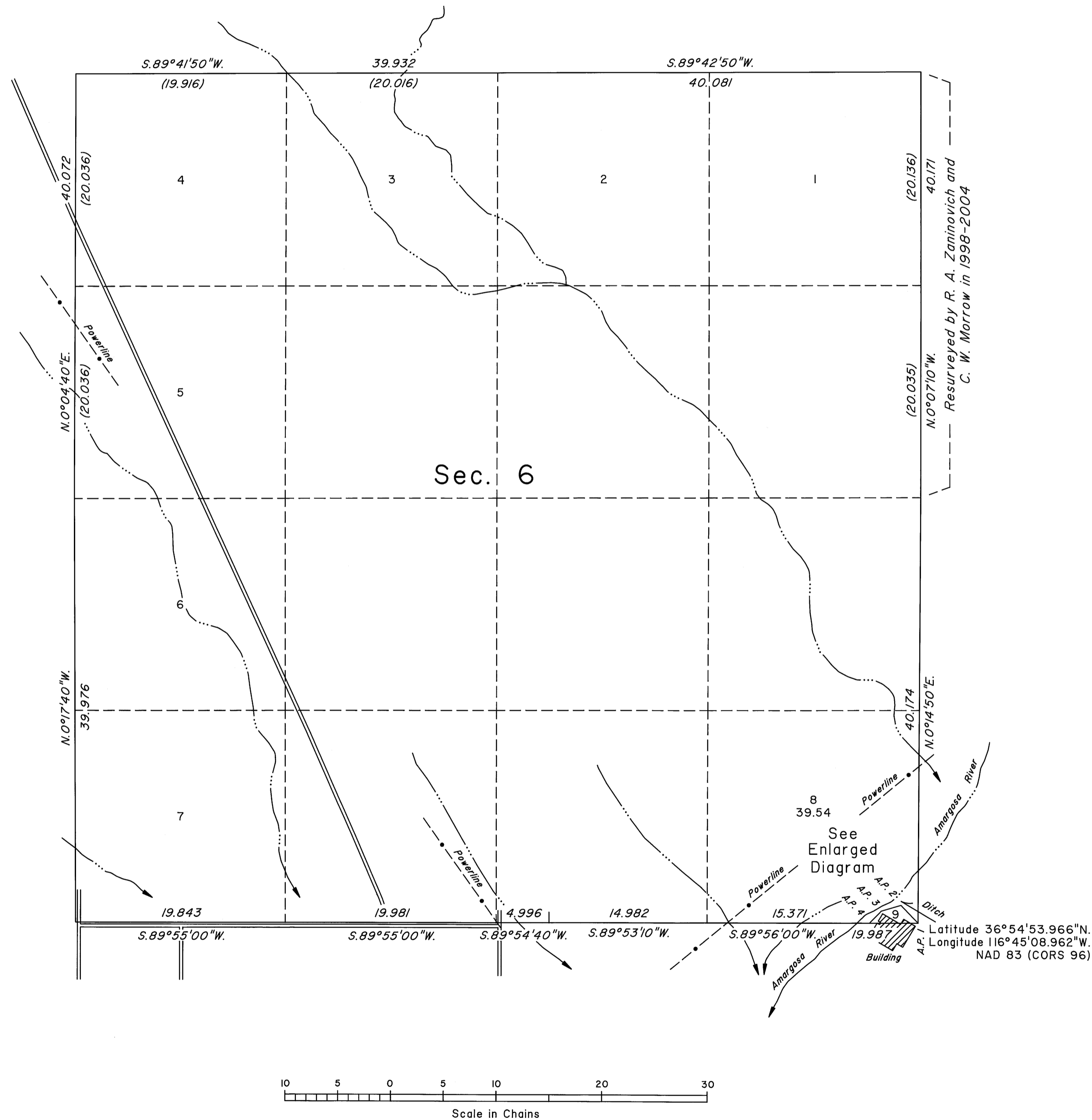
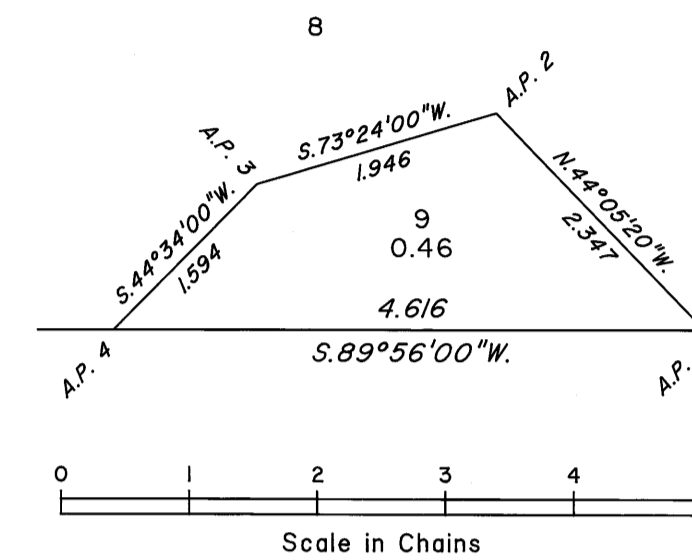


# TOWNSHIP 12 SOUTH, RANGE 47 EAST, OF THE MOUNT DIABLO MERIDIAN, NEVADA

## DEPENDENT RESURVEY AND METES-AND-BOUNDS SURVEY



ENLARGED DIAGRAM



A history of surveys is contained in the field notes.

This plat represents the dependent resurvey of a portion of the west boundary, a portion of the north boundary and a portion of the subdivisional lines designed to restore the corners in their true original locations according to the best available evidence, and a metes-and-bounds survey in section 6, Township 12 South, Range 47 East, Mount Diablo Meridian, Nevada.

Except as indicated hereon, the lottings and areas are as shown on the plat approved March 1, 1907.

Survey executed by Don R. Aschenbach, Cadastral Surveyor, beginning April 7, 2007, and completed December 13, 2007, pursuant to Special Instructions dated February 23, 2007, for Group No. 848, Nevada.

UNITED STATES DEPARTMENT OF THE INTERIOR  
BUREAU OF LAND MANAGEMENT

Reno, Nevada March 25, 2008

This plat is strictly conformable to the approved field notes, and the survey, having been correctly executed in accordance with the requirements of law and the regulations of this Bureau, is hereby accepted.

For the Director

Chief Cadastral Surveyor, Nevada