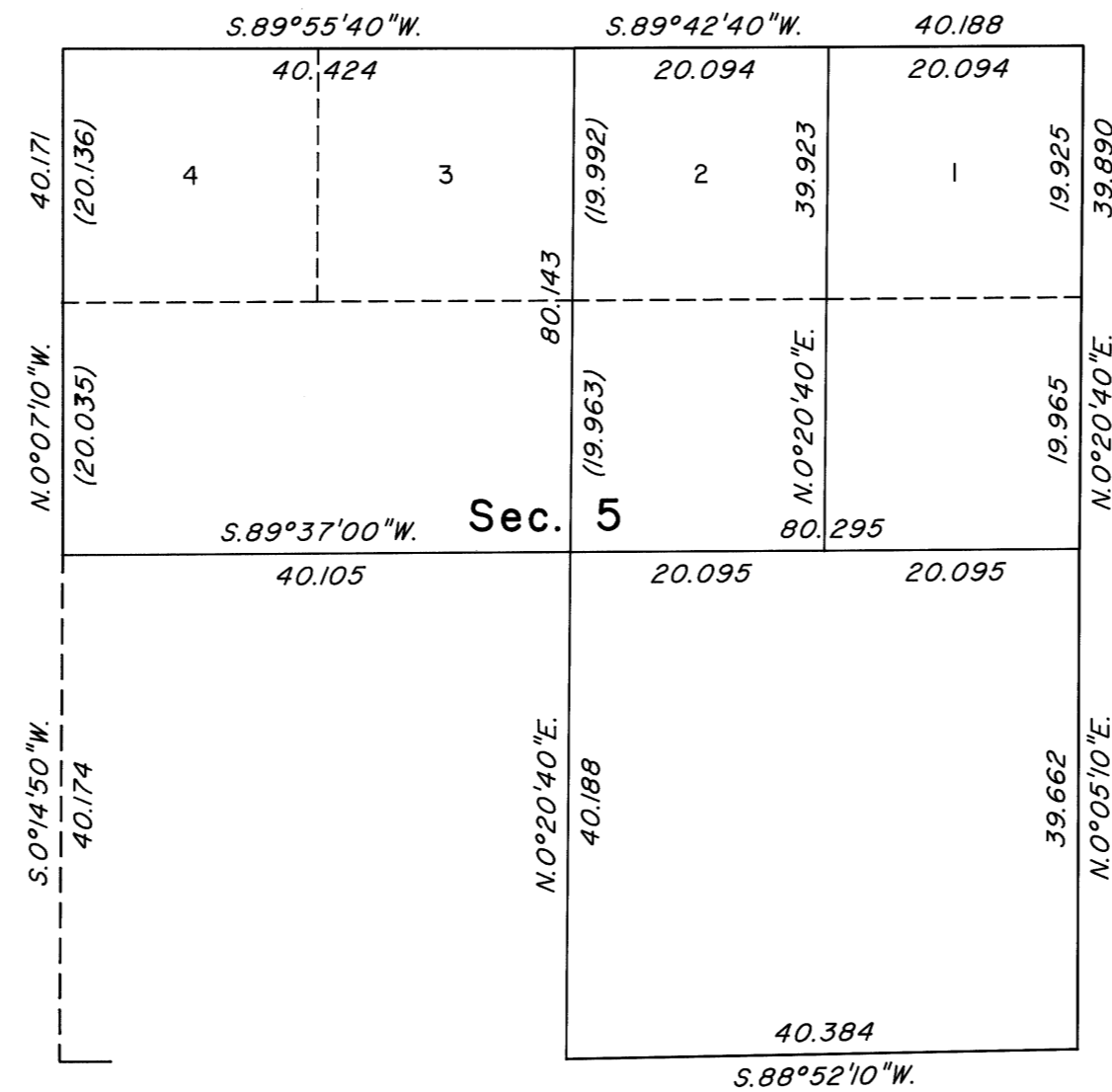
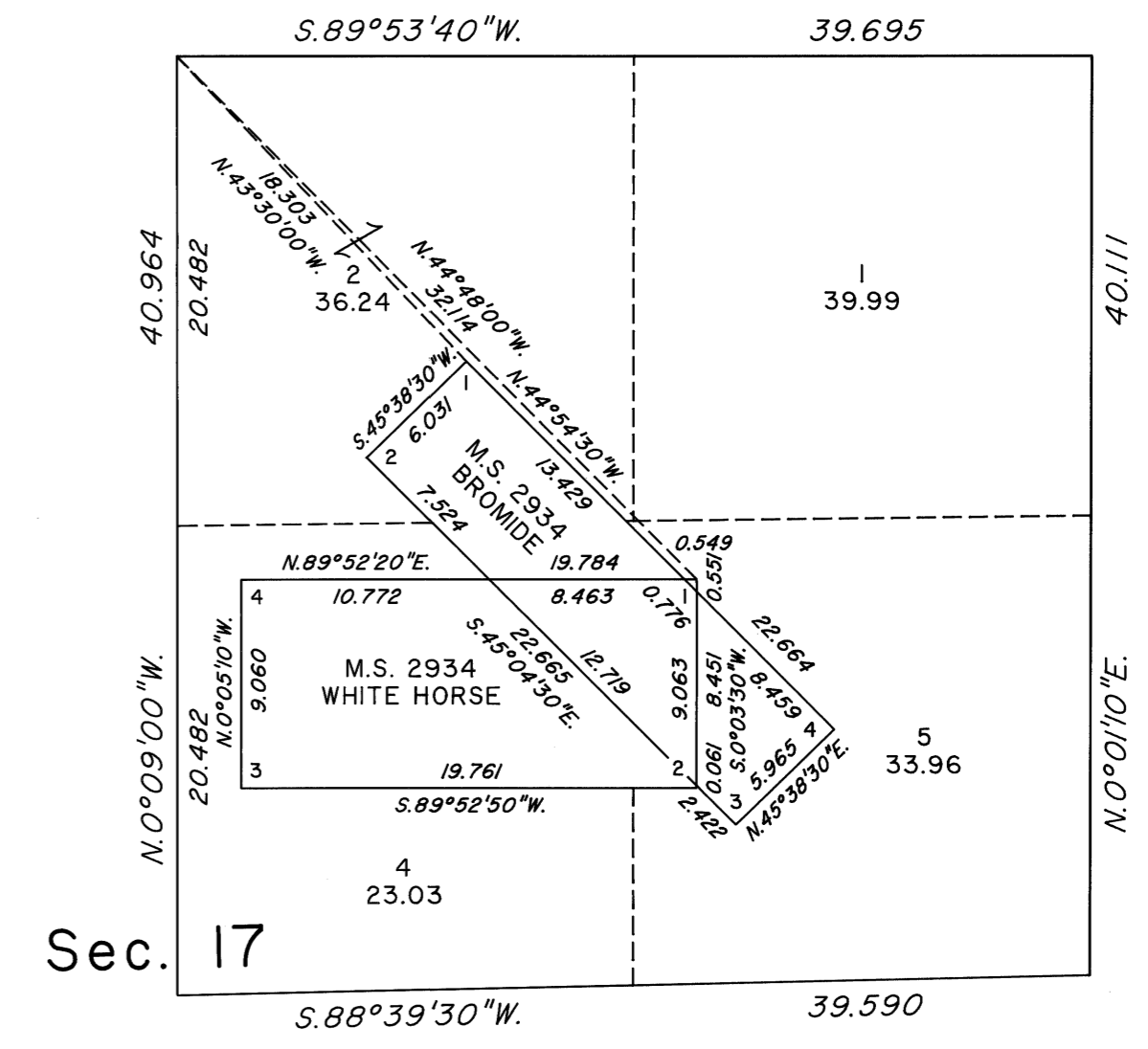


TOWNSHIP 12 SOUTH, RANGE 47 EAST, OF THE MOUNT DIABLO MERIDIAN, NEVADA

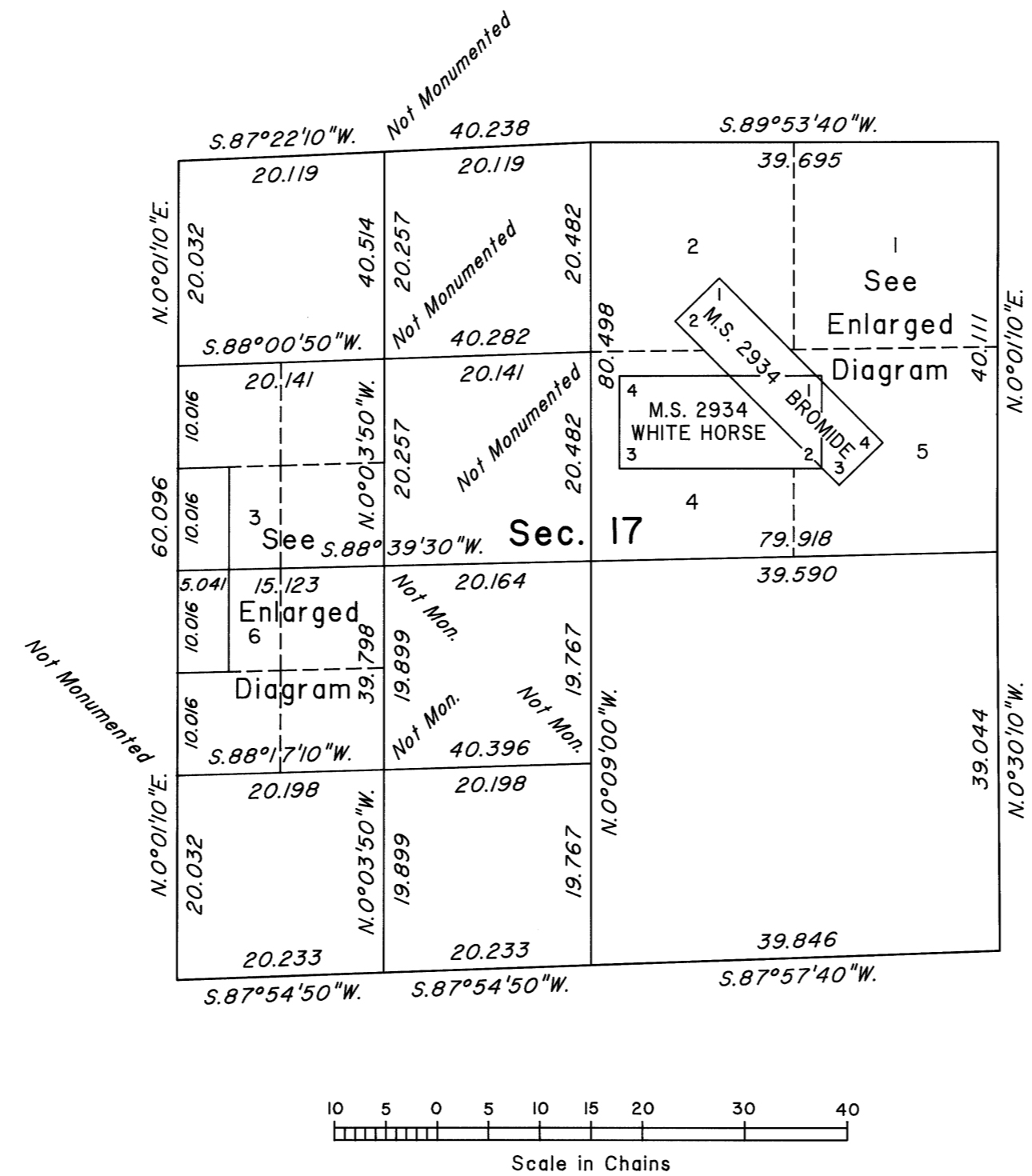
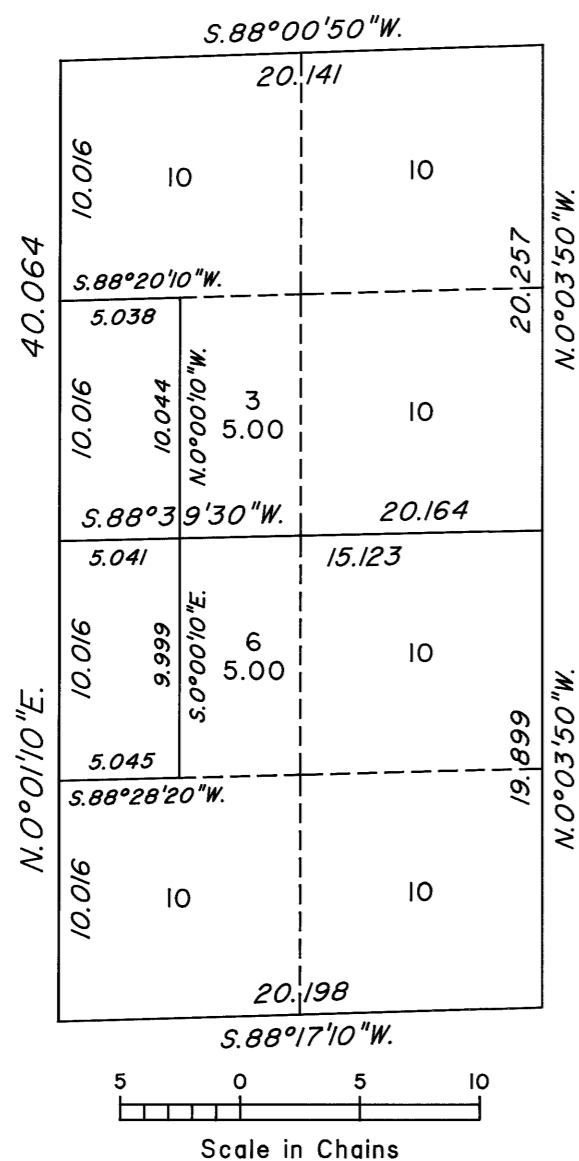
ENLARGED DIAGRAMS OF SECTIONS 5 AND 17



ENLARGED DIAGRAM OF NE 1/4 Sec. 17



ENLARGED DIAGRAM OF NW 1/4 SW 1/4 AND SW 1/4 NW 1/4, Sec. 17



Reference should be made to Sheet No. 1 for survey information.

UNITED STATES DEPARTMENT OF THE INTERIOR
BUREAU OF LAND MANAGEMENT

Reno, Nevada April 19, 2005

This plat is strictly conformable to the approved field notes, and the survey, having been correctly executed in accordance with the requirements of law and the regulations of this Bureau, is hereby accepted.

For the Director

David W. Morlan

Chief Cadastral Surveyor, Nevada

OFFICIALLY FILED
NEVADA STATE OFFICE
at 10:00 AM on April 21, 2005