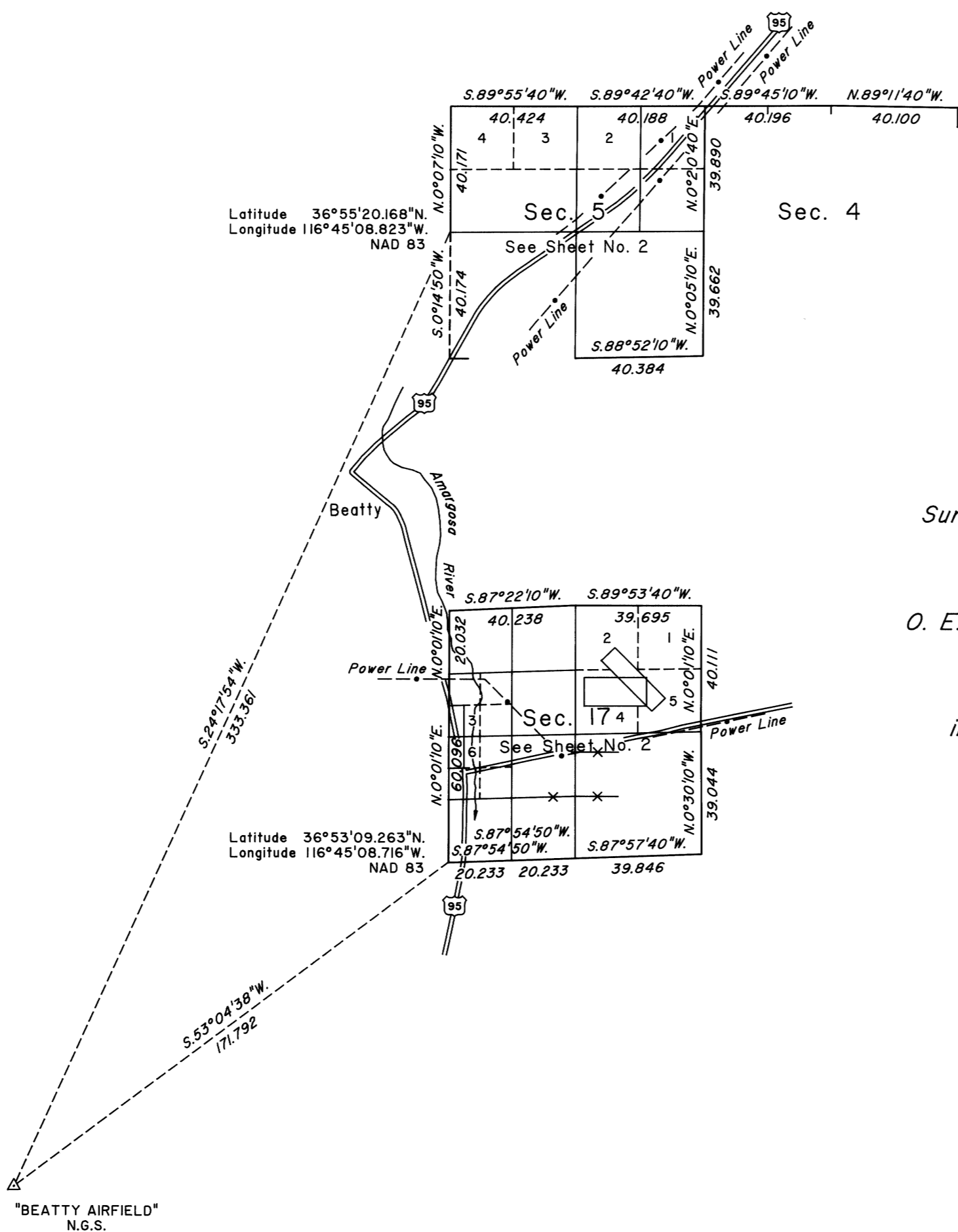
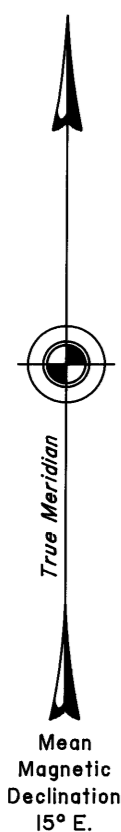


TOWNSHIP 12 SOUTH, RANGE 47 EAST, OF THE MOUNT DIABLO MERIDIAN, NEVADA

DEPENDENT RESURVEY AND SUBDIVISION

OFFICIALLY FILED
NEVADA STATE OFFICE
at 10:00 AM on April 21, 2005



Surveyed by
O. E. Brashears
in 1906

A history of surveys is contained in the field notes.

A dependent resurvey of a portion of the north boundary was executed concurrently under T. 12 S., R. 47 E., of this same group.

This plat, in two sheets, represents the dependent resurvey of a portion of the subdivisinal lines and Mineral Survey No. 2934 designed to restore the corners in their true original locations according to the best available evidence, and the subdivision of sections 5 and 17, Township 12 South, Range 47 East, Mount Diablo Meridian, Nevada.

Except as indicated hereon, the lottings and areas are as shown on the plat approved March 1, 1907.

Survey executed by Richard A. Zaninovich, Cadastral Surveyor and Clay W. Morrow, Surveying Technician, beginning January 26, 1998, and completed March 24, 2004, pursuant to Special Instructions dated January 26, 1998, for Group No. 772, Nevada.

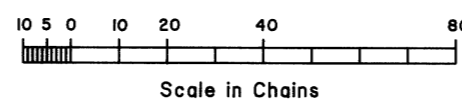
UNITED STATES DEPARTMENT OF THE INTERIOR
BUREAU OF LAND MANAGEMENT

Reno, Nevada April 19, 2005

This plat is strictly conformable to the approved field notes, and the survey, having been correctly executed in accordance with the requirements of law and the regulations of this Bureau, is hereby accepted.

For the Director

Chief Cadastral Surveyor, Nevada



62

RHT