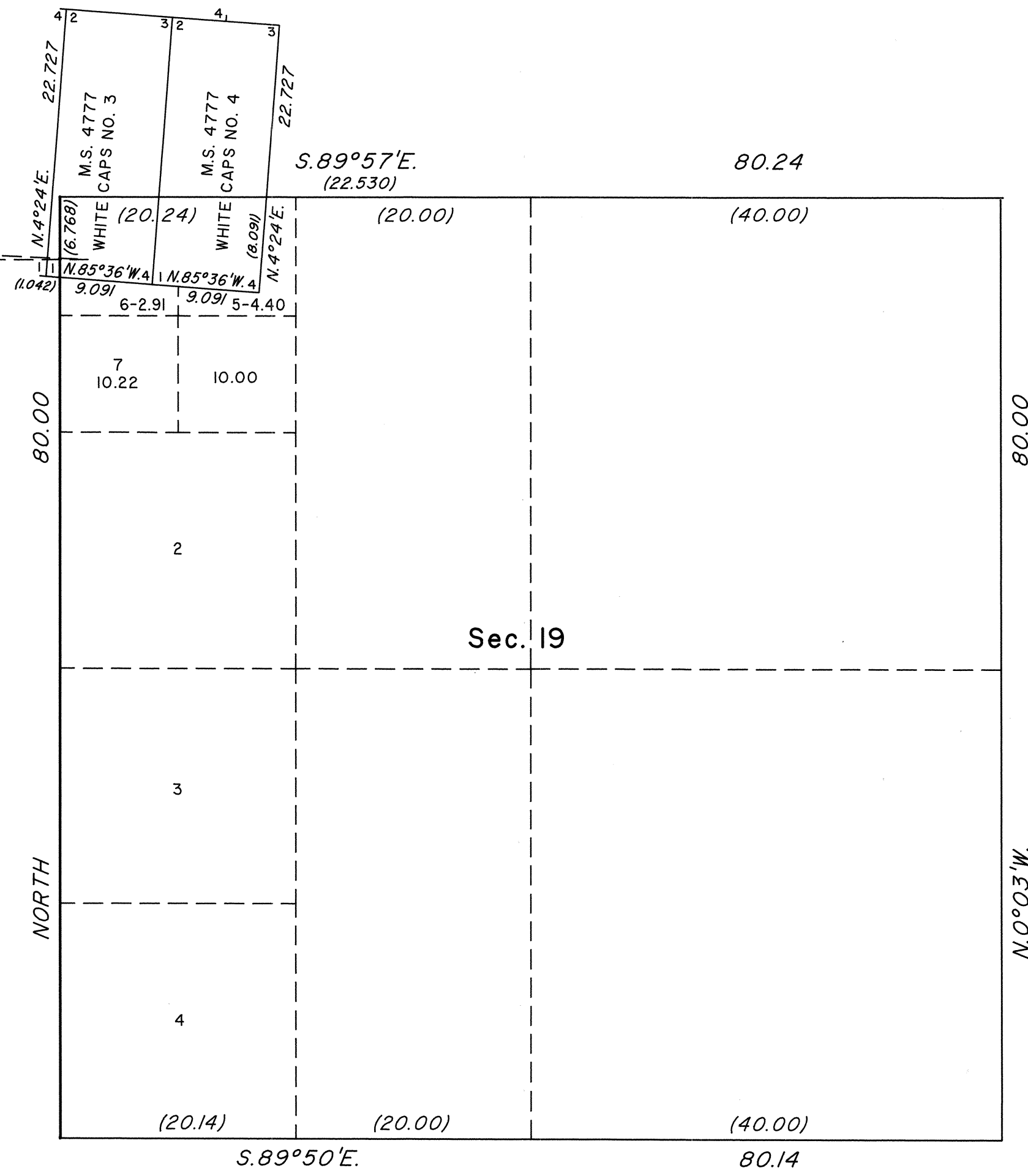
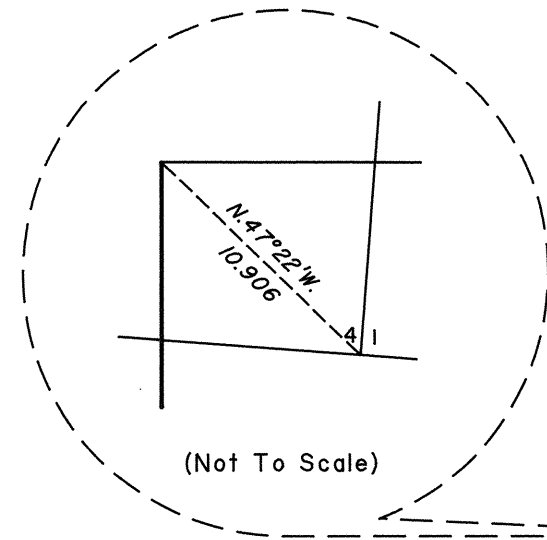


TOWNSHIP 12 SOUTH, RANGE 47 EAST, OF THE MOUNT DIABLO MERIDIAN, NEVADA
SUPPLEMENTAL PLAT OF SEC. 19



This plat, showing amended lottings created by the segregation of Mineral Survey No. 4777 in section 19, Township 12 South, Range 47 East, Mount Diablo Meridian, Nevada, is based upon the plat approved March 1, 1907, and the plat for Mineral Survey No. 4777 approved October 11, 1944.

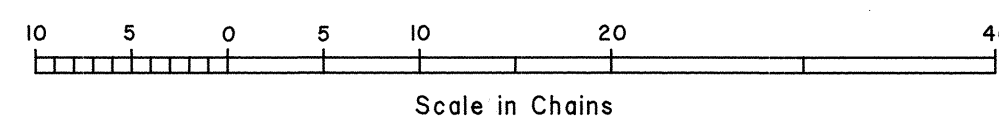
UNITED STATES DEPARTMENT OF THE INTERIOR
BUREAU OF LAND MANAGEMENT

Reno, Nevada January 13, 1995

This plat, showing amended lottings, is based upon the official records, and having been correctly prepared in accordance with the regulations of this Bureau, is hereby accepted.

For the Director

Chief Cadastral Surveyor, Nevada



R&J

RHT