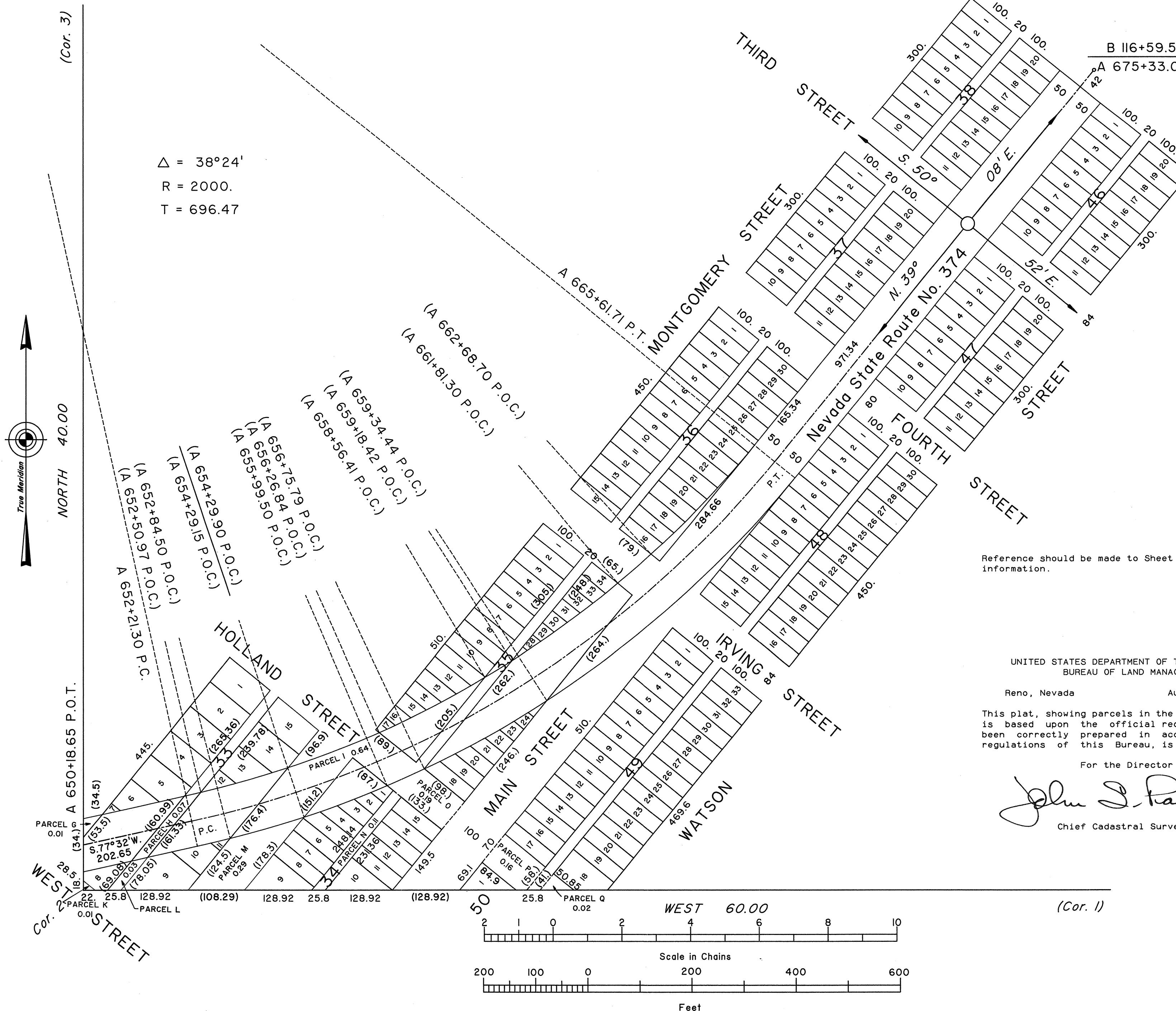


TOWNSHIP 12 SOUTH, RANGE 47 EAST, OF THE MOUNT DIABLO MERIDIAN, NEVADA

ENLARGED DIAGRAM OF NEVADA STATE ROUTE NO. 374



$\Delta = 38^{\circ}24'$
 $R = 2000.$
 $T = 696.47$

B 116+59.51 P.O.T.
 A 675+33.05 P.O.T.

Reference should be made to Sheet No. 1 for survey information.

UNITED STATES DEPARTMENT OF THE INTERIOR
BUREAU OF LAND MANAGEMENT

Reno, Nevada August 1, 1990

This plat, showing parcels in the Beatty Townsite, is based upon the official records and, having been correctly prepared in accordance with the regulations of this Bureau, is hereby accepted.

For the Director

John J. Parish
Chief Cadastral Surveyor

