

TOWNSHIP 12 SOUTH, RANGE 47 EAST, OF THE MOUNT DIABLO MERIDIAN, NEVADA
SUPPLEMENTAL PLAT OF BEATTY TOWNSITE

This plat, in three sheets, showing parcels in the Beatty Townsite, located in section 7, T. 12 S., R. 47 E., Mount Diablo Meridian, Nevada, is based upon the plat approved June 26, 1908 and the State of Nevada Department of Transportation maps dated April 27, 1937, October 25, 1955, and the following highway right-of-way maps; A. Revert Trust, December (no date), 1955 and the Estate of John Konzos, April (no date), 1955.

See Sheet No. 2 for an enlargement of Nevada State Route No. 374 and Sheet No. 3 for an enlargement of U.S. Highway No. 95.

UNITED STATES DEPARTMENT OF THE INTERIOR
BUREAU OF LAND MANAGEMENT
Reno, Nevada August 1, 1990

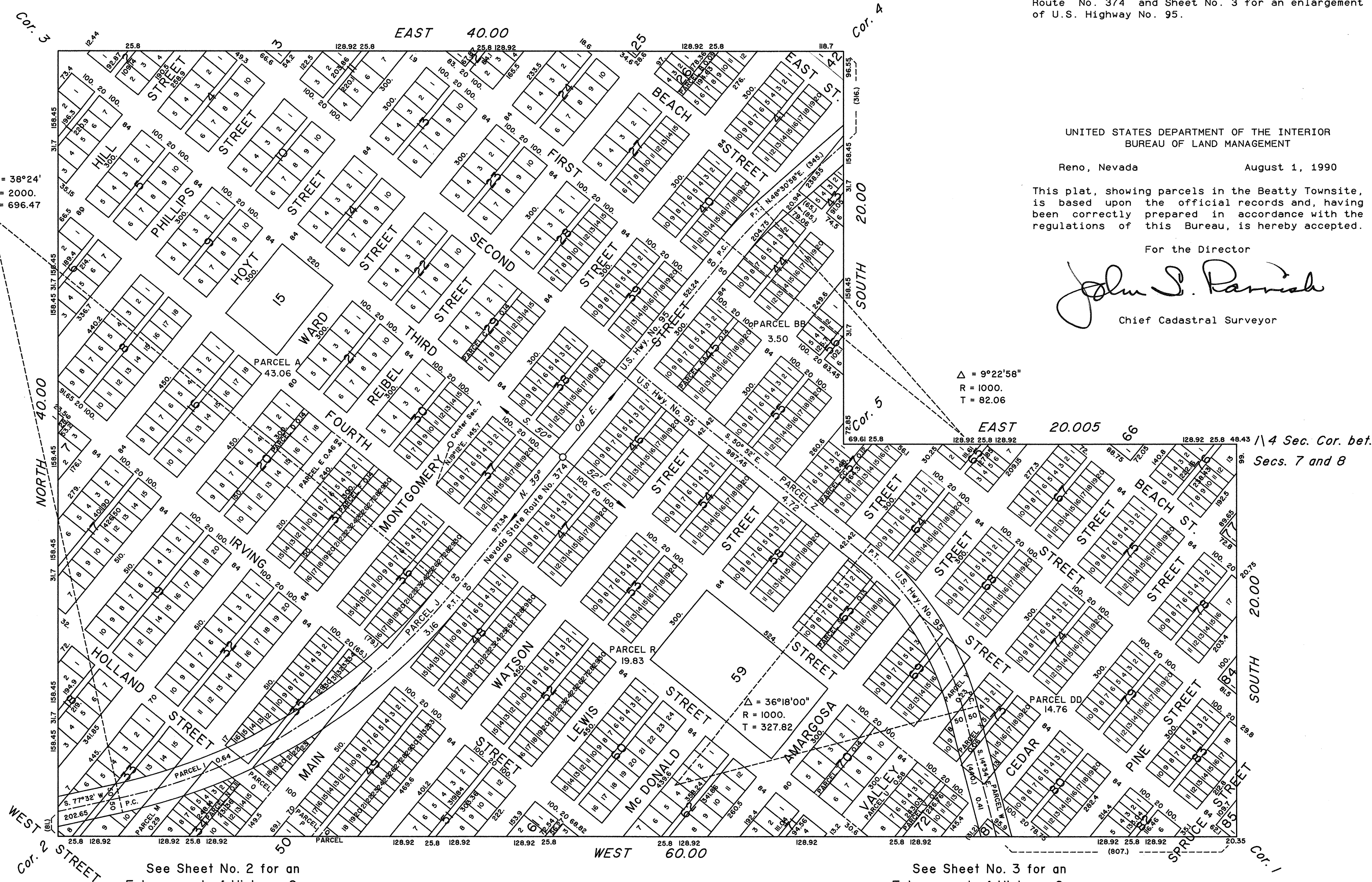
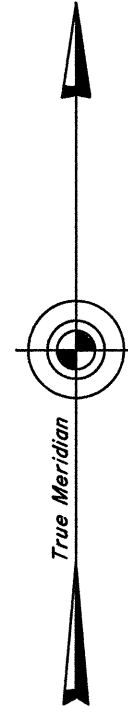
This plat, showing parcels in the Beatty Townsite, is based upon the official records and, having been correctly prepared in accordance with the regulations of this Bureau, is hereby accepted.

For the Director

John S. Parrish
Chief Cadastral Surveyor

$\Delta = 9^{\circ}22'58''$
R = 1000.
T = 82.06

$\Delta = 38^{\circ}24'$
R = 2000.
T = 696.47



See Sheet No. 2 for an Enlargement of Highway Curve

See Sheet No. 3 for an Enlargement of Highway Curve

