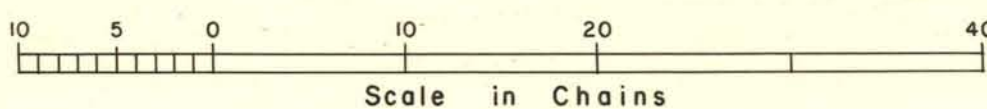
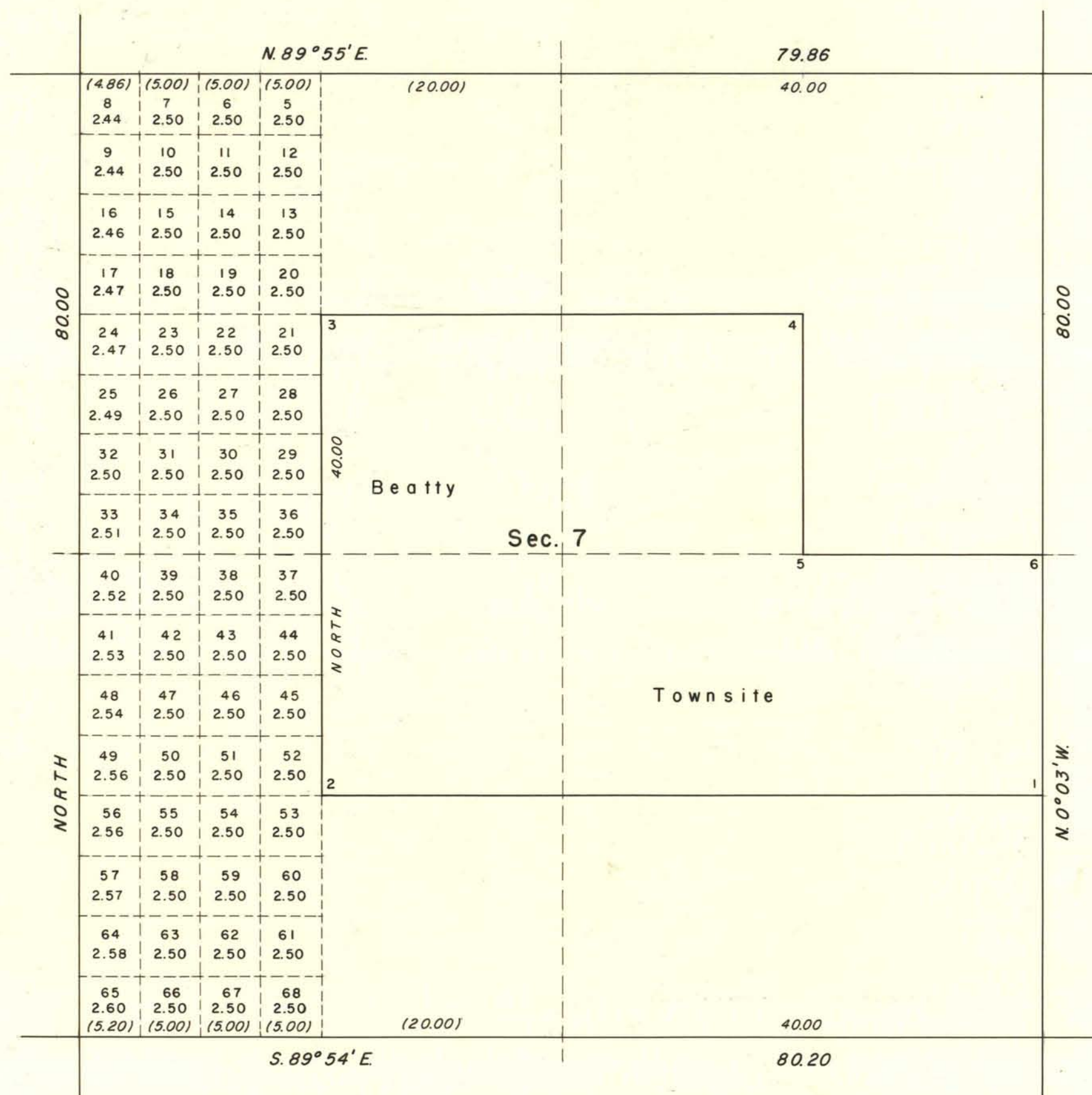


# TOWNSHIP 12 SOUTH RANGE 47 EAST OF THE MOUNT DIABLO MERIDIAN NEVADA

## SUPPLEMENTAL PLAT OF SECTION 7



This plat, showing the subdivision of original lots 1, 2, 3, and 4, section 7, T. 12 S., R. 47 E., Mount Diablo Meridian, Nevada, is based upon plats approved March 1, 1907 and June 26, 1908.

UNITED STATES DEPARTMENT OF THE INTERIOR  
BUREAU OF LAND MANAGEMENT  
Washington, D.C. June 1, 1959

This plat, showing amended lottings, is based upon the official records, and having been correctly prepared in accordance with the regulations, is hereby accepted.

For the Director

*Carl G. Harrington*  
Cadastral Engineering Staff Officer