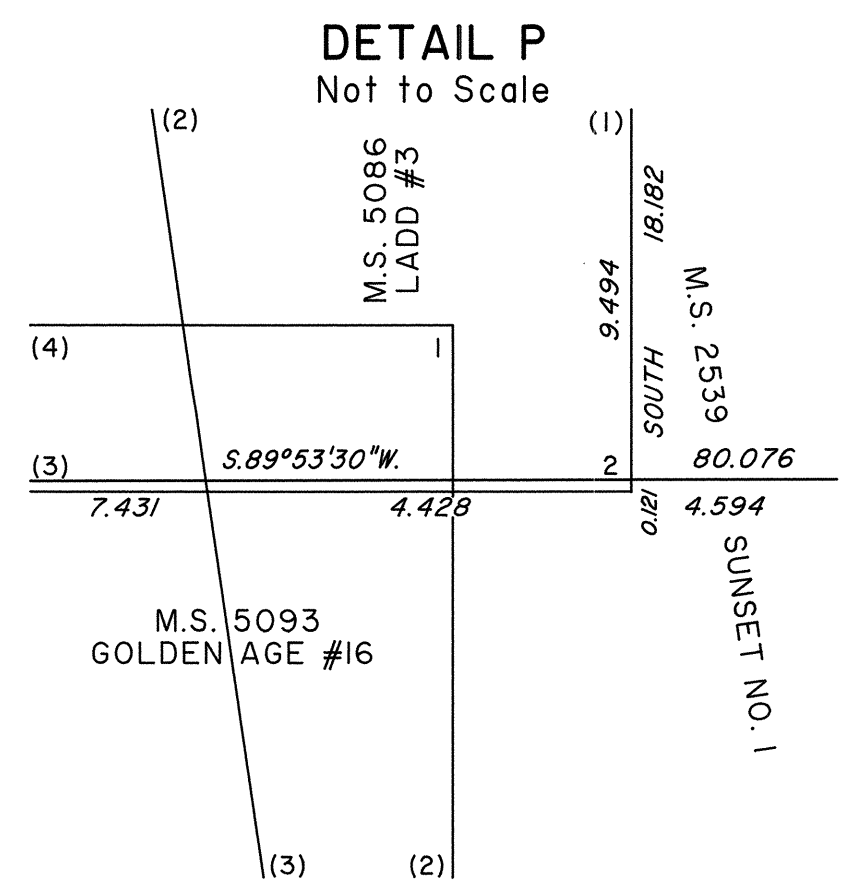
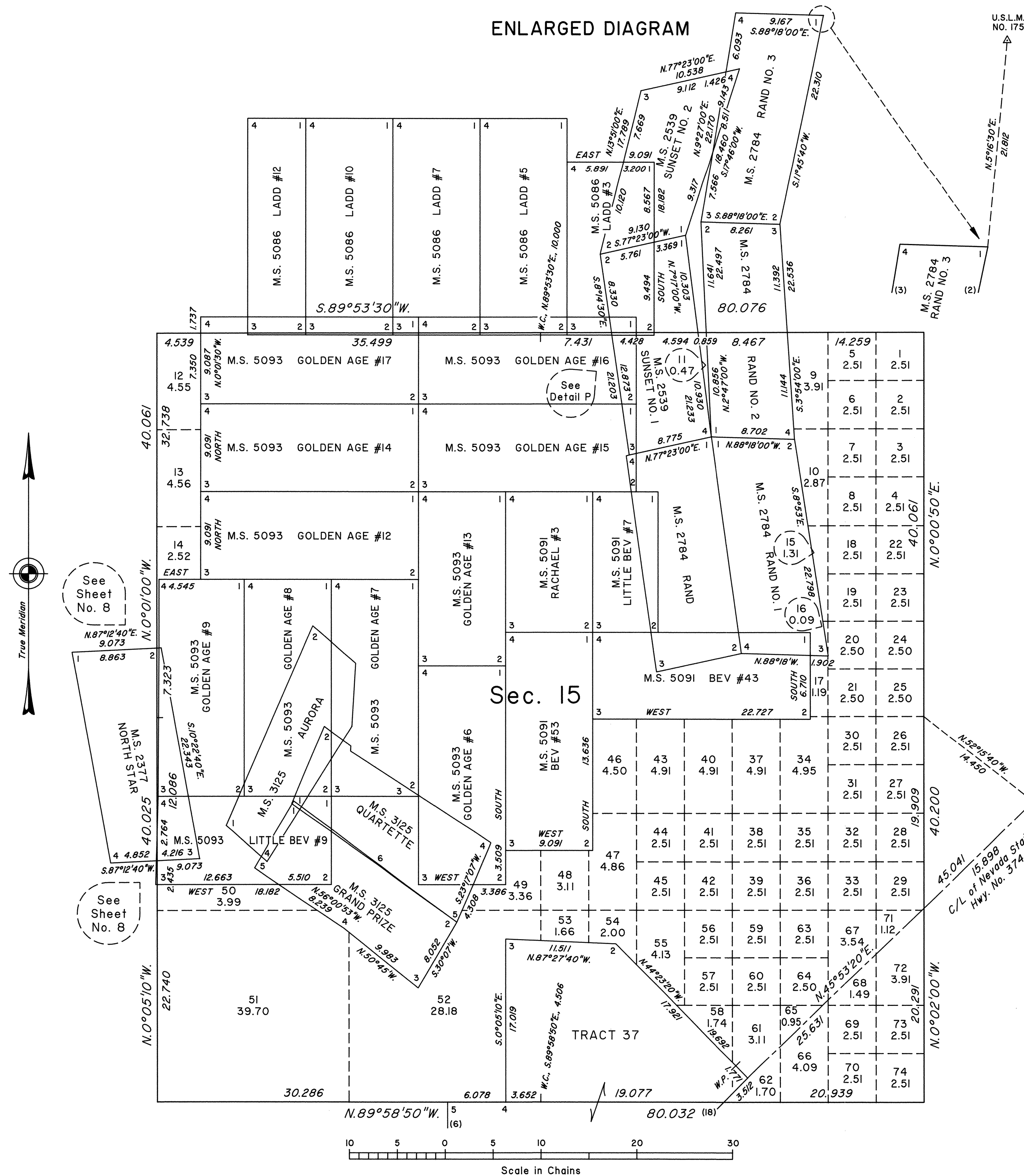


TOWNSHIP 12 SOUTH, RANGE 46 EAST, OF THE MOUNT DIABLO MERIDIAN, NEVADA

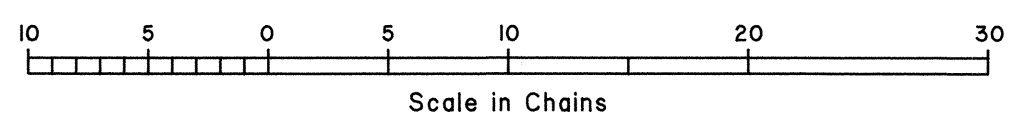
ENLARGED DIAGRAM



This sheet represents an enlarged diagram of section 15, and a portion of Tract 37. Reference should be made to Sheet No. 1 for survey information.

UNITED STATES DEPARTMENT OF THE INTERIOR
BUREAU OF LAND MANAGEMENT
Reno, Nevada September 22, 2000
This plat is strictly conformable to the approved field notes, and the survey, having been correctly executed in accordance with the requirements of law and the regulations of this Bureau, is hereby accepted.

For the Director
Mary J. M. Hartzel
Acting Chief Cadastral Surveyor, Nevada



T.12S., R.46E., M.D.M.

OFFICIALLY FILED
NEVADA STATE OFFICE
at 10:00 AM on September 25, 2000