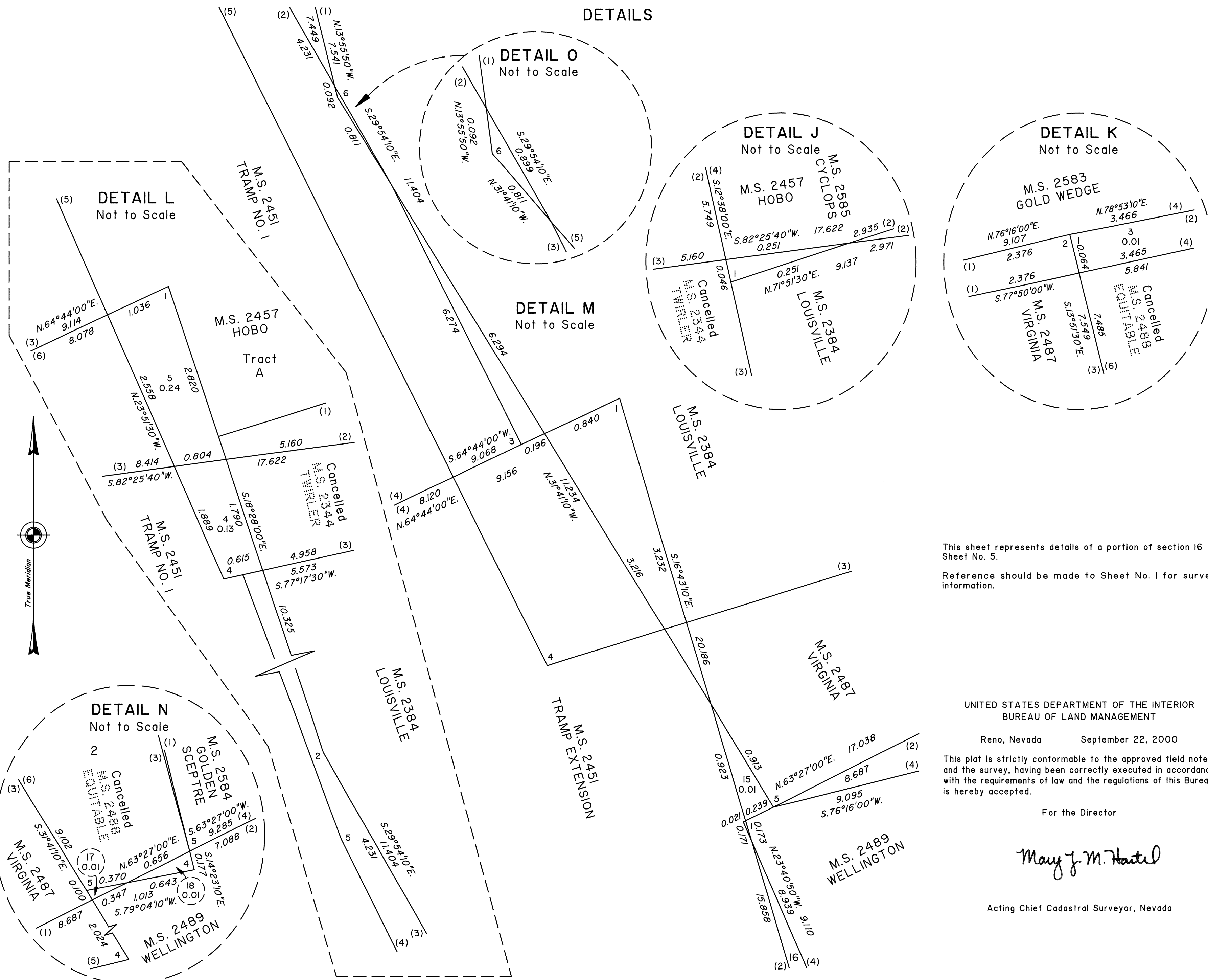


OFFICIALLY FILED
NEVADA STATE OFFICE
at 10:00 AM on September 25, 2000

TOWNSHIP 12 SOUTH, RANGE 46 EAST, OF THE MOUNT DIABLO MERIDIAN, NEVADA

DETAILS



DETAIL L
Not to Scale

DETAIL O
Not to Scale

DETAIL J
Not to Scale

DETAIL K
Not to Scale

DETAIL M
Not to Scale

DETAIL N
Not to Scale

This sheet represents details of a portion of section 16 of Sheet No. 5.
Reference should be made to Sheet No. 1 for survey information.

UNITED STATES DEPARTMENT OF THE INTERIOR
BUREAU OF LAND MANAGEMENT

Reno, Nevada September 22, 2000

This plat is strictly conformable to the approved field notes, and the survey, having been correctly executed in accordance with the requirements of law and the regulations of this Bureau, is hereby accepted.

For the Director

Mary J. M. Hartzel

Acting Chief Cadastral Surveyor, Nevada