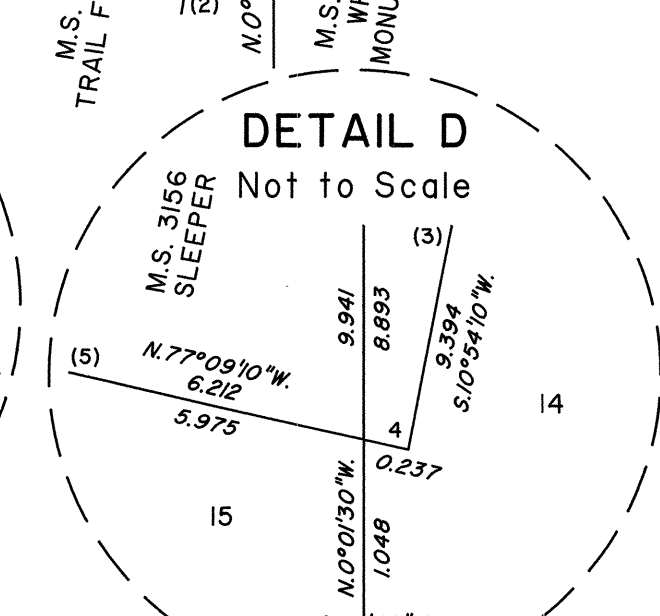
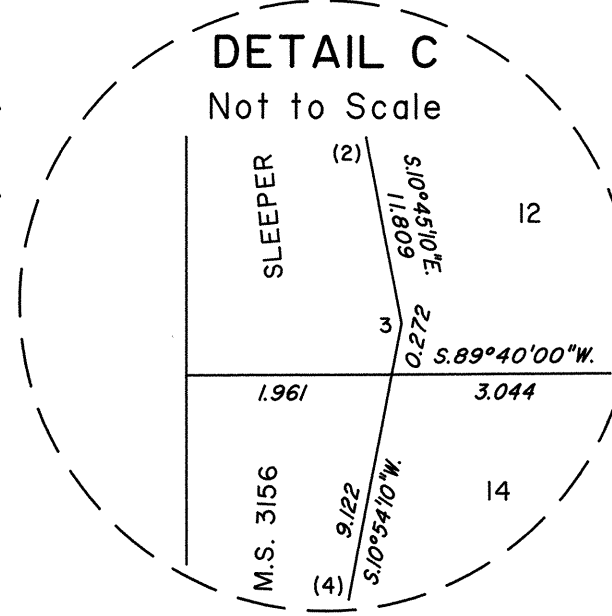
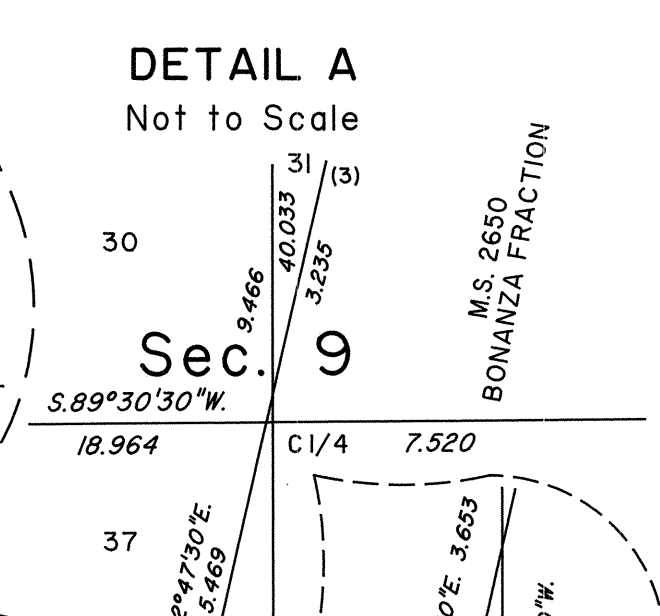
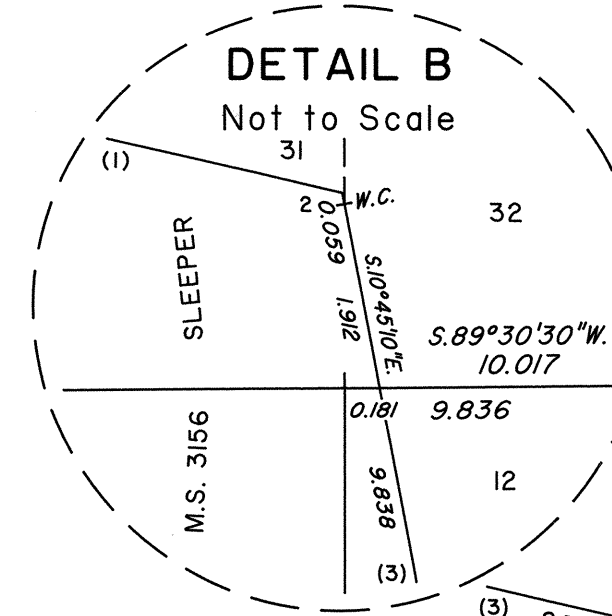
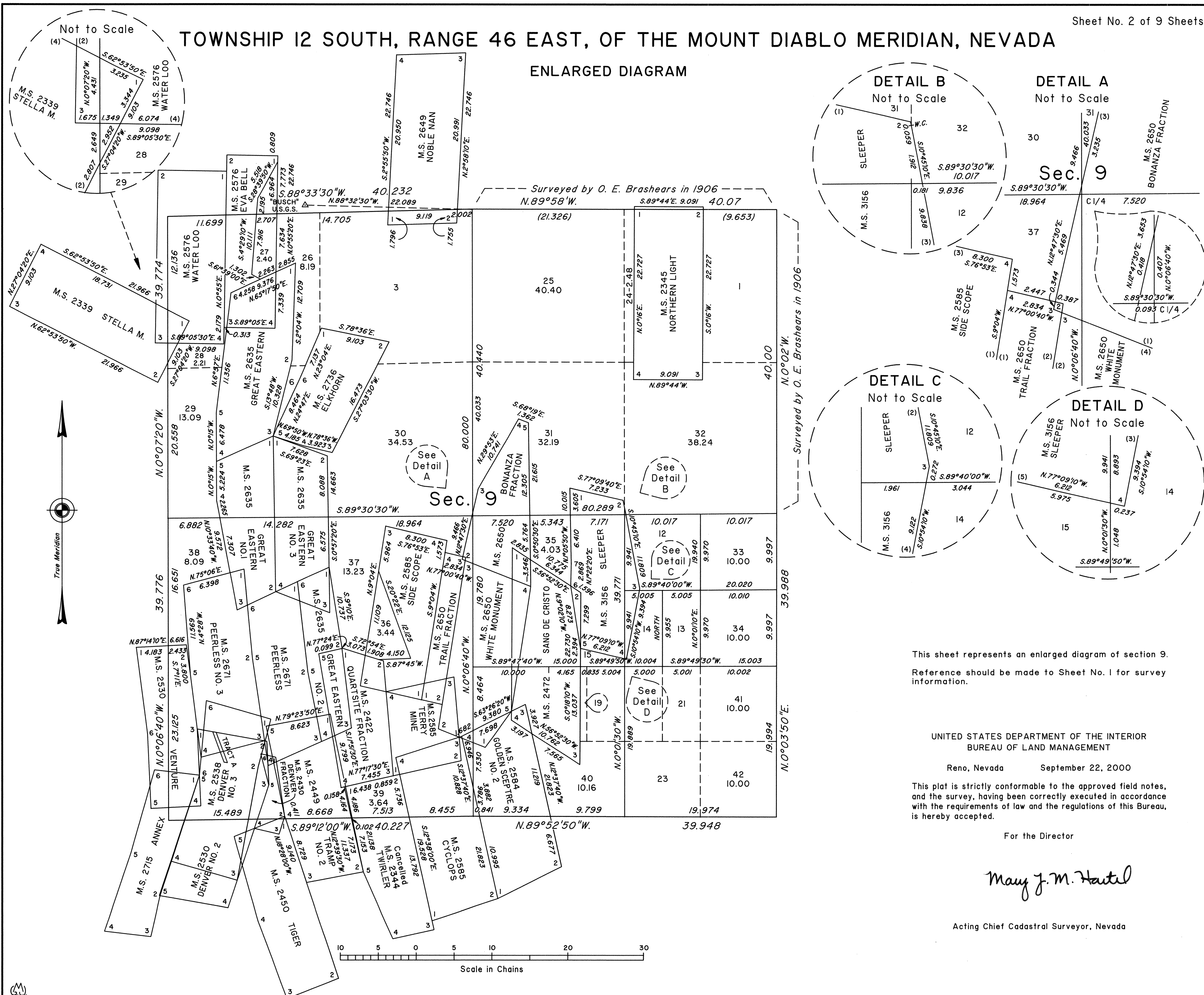


TOWNSHIP 12 SOUTH, RANGE 46 EAST, OF THE MOUNT DIABLO MERIDIAN, NEVADA

ENLARGED DIAGRAM

OFFICIALLY FILED  
NEVADA STATE OFFICE  
at 10:00 AM on September 25, 2000



This sheet represents an enlarged diagram of section 9. Reference should be made to Sheet No. 1 for survey information.

UNITED STATES DEPARTMENT OF THE INTERIOR  
BUREAU OF LAND MANAGEMENT

Reno, Nevada September 22, 2000

This plat is strictly conformable to the approved field notes, and the survey, having been correctly executed in accordance with the requirements of law and the regulations of this Bureau, is hereby accepted.

For the Director

*May J. M. Haultel*

Acting Chief Cadastral Surveyor, Nevada