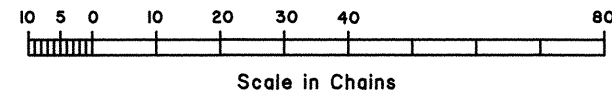
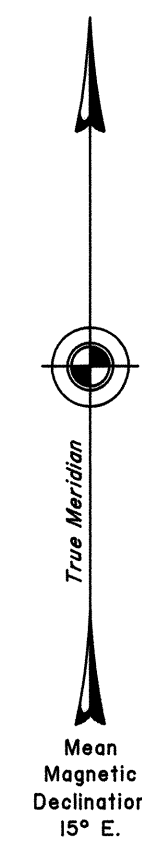
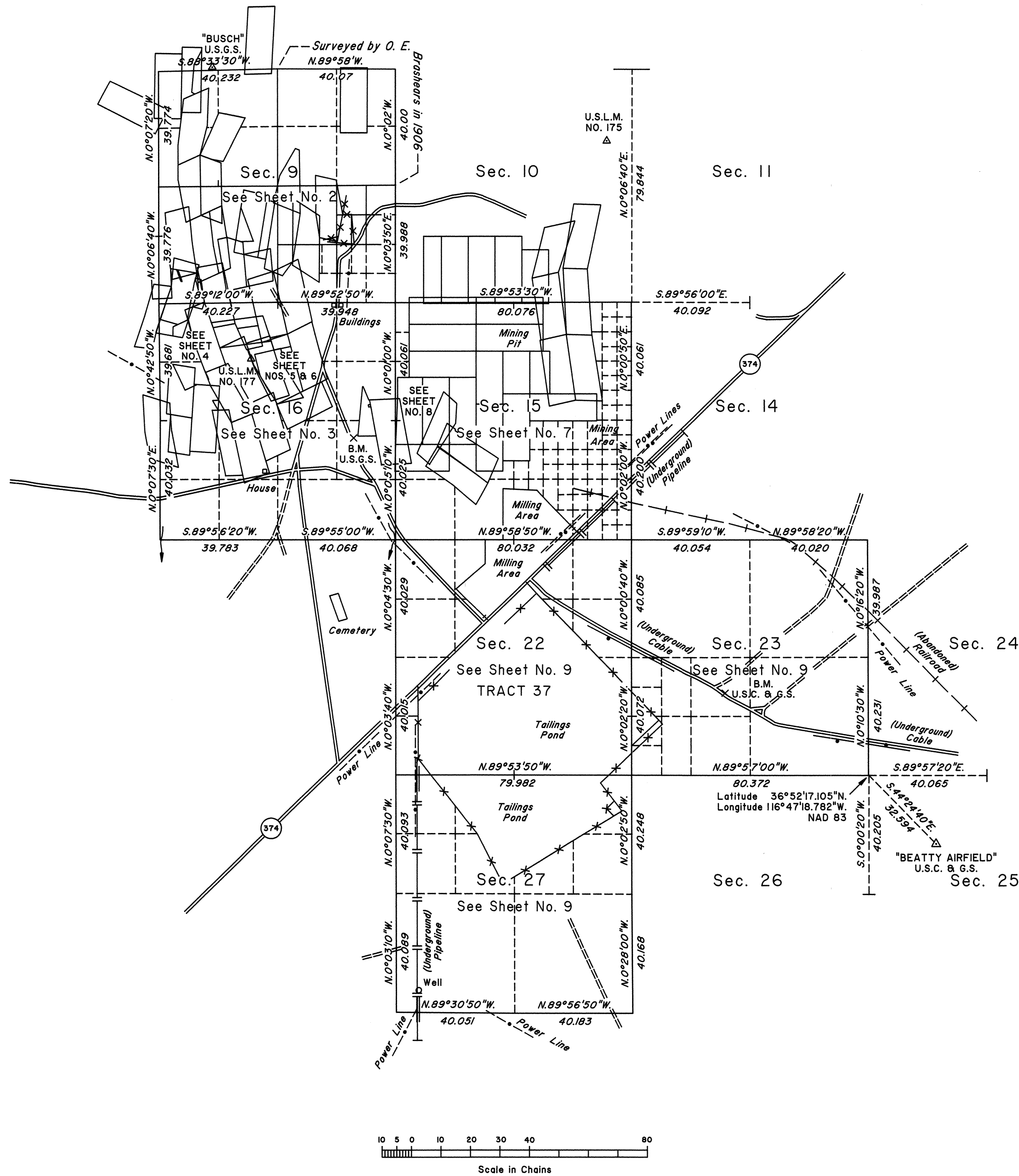


TOWNSHIP 12 SOUTH, RANGE 46 EAST, OF THE MOUNT DIABLO MERIDIAN, NEVADA

DEPENDENT RESURVEY AND SUBDIVISION

OFFICIALLY FILED
NEVADA STATE OFFICE
at 10:00 AM on September 25, 2000



A history of surveys is contained in the field notes.

This plat, in nine sheets, represents the dependent resurvey of a portion of the subdivisional lines and portions of certain mineral surveys designed to restore the corners in their true original locations according to the best available evidence, and the subdivision of section 9, and the metes-and-bounds surveys of a portion of Nevada State Highway No. 374 and Tract 37, Township 12 South, Range 46 East, Mount Diablo Meridian, Nevada.

Except as indicated hereon, the lottings and areas are as shown on the plat approved March 1, 1907 and the supplemental plat of section 9 accepted December 17, 1965.

Unless otherwise indicated in the field notes, all courses and distances shown on the plat along the perimeter of the mineral segregation areas were taken or computed from the appropriate mineral survey record.

For enlargements of sections 9, 15, 16, 22, 23 and 27, and Tract 37, see Sheet Nos. 2 through 9 as reference hereon.

Survey executed by Thomas E. Casinger, Cadastral Surveyor, beginning July 23, 1998, and completed April 17, 2000, pursuant to Special Instructions dated July 23, 1998, for Group No. 774, Nevada.

UNITED STATES DEPARTMENT OF THE INTERIOR
BUREAU OF LAND MANAGEMENT

Reno, Nevada September 22, 2000

This plat is strictly conformable to the approved field notes, and the survey, having been correctly executed in accordance with the requirements of law and the regulations of this Bureau, is hereby accepted.

For the Director

Mary J. M. Hartzel

Acting Chief Cadastral Surveyor, Nevada