

TOWNSHIP 12 SOUTH, RANGE 46 EAST, OF THE MOUNT DIABLO MERIDIAN, NEVADA
SUPPLEMENTAL PLAT OF SECTION 9

OFFICIALLY FILED
NEVADA LAND OFFICE
10:00 A.M. JANUARY 31, 1966

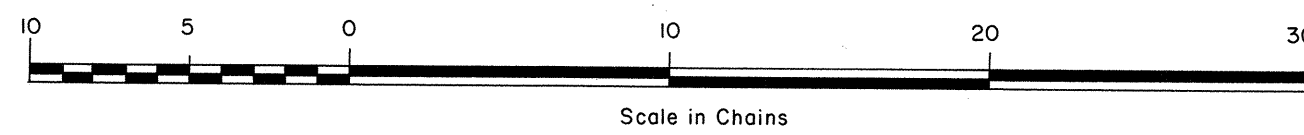
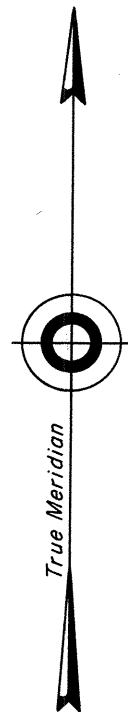
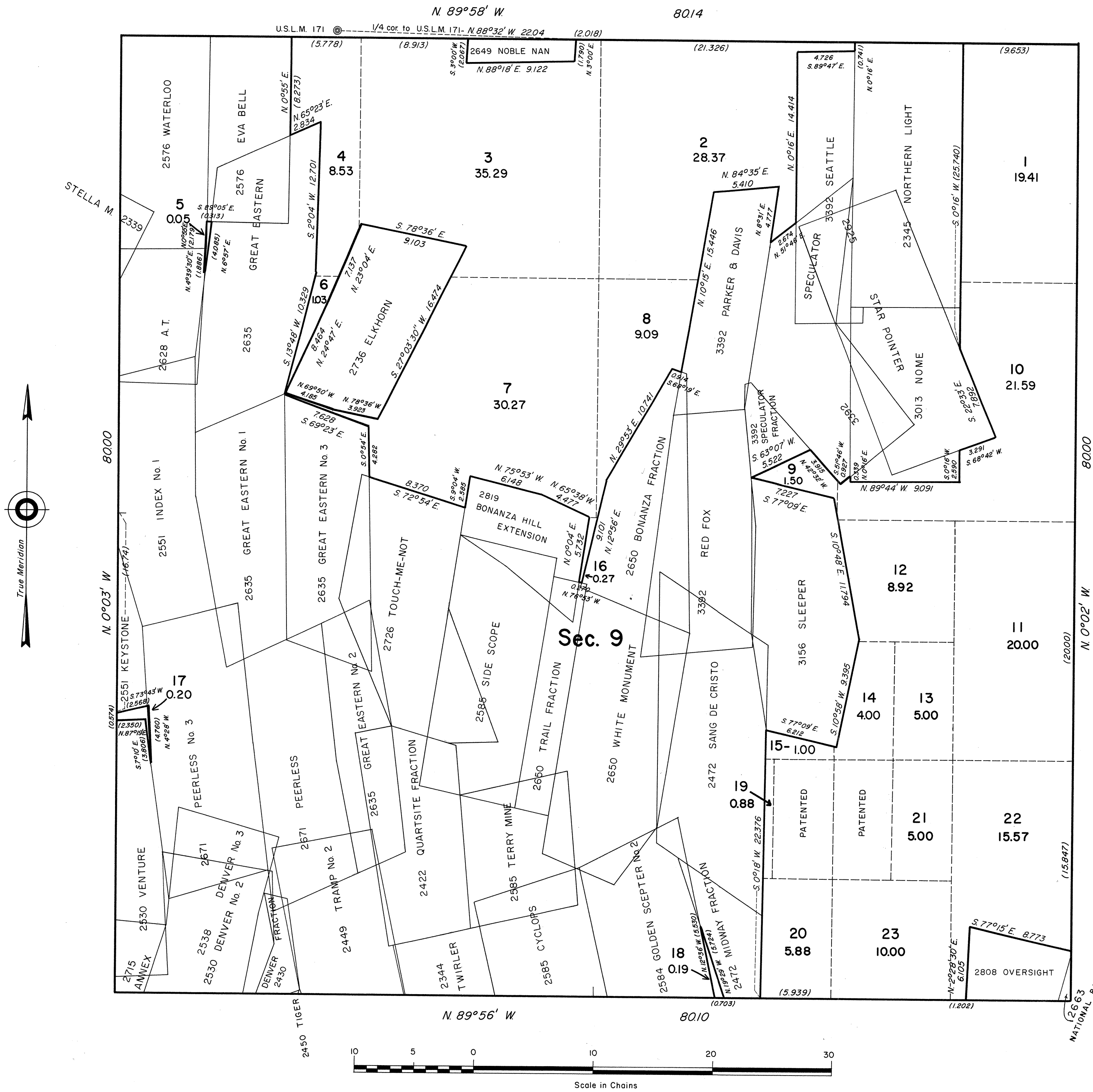
This supplemental plat of section 9, showing new lottings created by the segregation of mineral surveys, is based upon the plat approved March 1, 1907, and the approved mineral survey records.

UNITED STATES DEPARTMENT OF THE INTERIOR
BUREAU OF LAND MANAGEMENT
Washington, D. C. December 17, 1965

This plat, showing new lottings, is based upon the official records, and having been correctly prepared in accordance with the regulations, is hereby accepted.

For the Director

[Signature]
Chief, Division of Engineering



J.R.W.

1702-A

T12S, R46E - Sec 9

F178