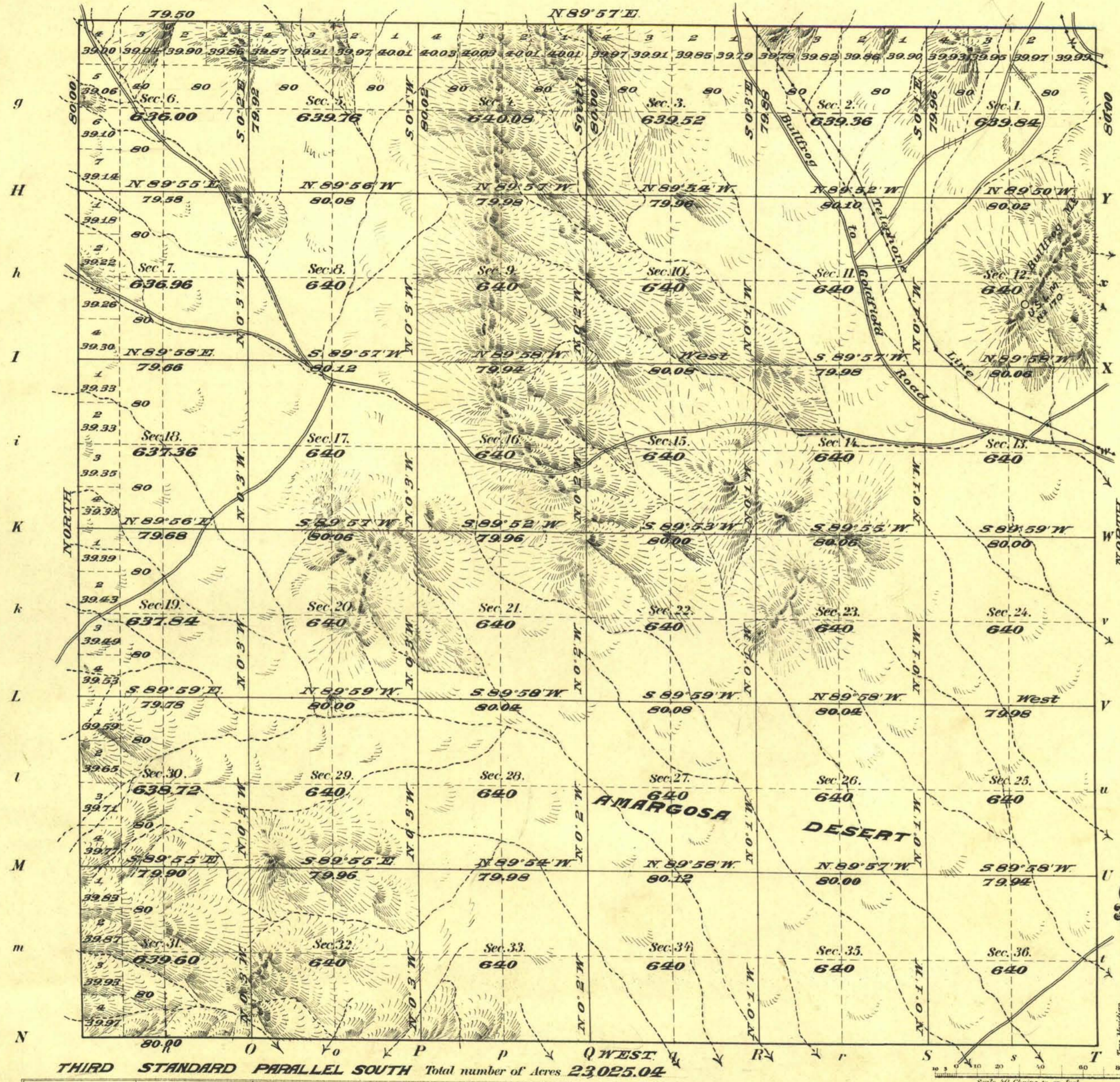


Township N<sup>o</sup> 12 South Range N<sup>o</sup> 45 East, M<sup>t</sup> Diablo Meridian Nevada.

G f F e E d D c C b B a A



Meanders of								
Posts	Courses	Ch <sup>2</sup> Lk <sup>2</sup>	Posts	Courses	Ch <sup>2</sup> Lk <sup>2</sup>	Posts	Courses	Ch <sup>2</sup> Lk <sup>2</sup>

Note  
Deputy returns Mineral  
indications throughout entire  
Township

Latitude 36° 48' N  
Longitude 116° 49' 44" W  
Mean mag decl 16° 15' E

THIRD STANDARD PARALLEL SOUTH Total number of Acres 23,025.04

Surveys Designated	By Whom Surveyed	Date of Contract	Amount of Surveys M. Ch <sup>2</sup> Lk <sup>2</sup>	When Surveyed	Contract No.
N.E. AND W. Township lines	Office of Brashears	Oct. 2, 1905	17-79-50	June 6-27, 06	248
Subdivisions	" " "	" " "	59-78-92	" 28, July 6,	"
3 <sup>rd</sup> Stan. Par. S.	" " "	" " "	6-00-00	May -11, "	"

The above Map of Township N<sup>o</sup> 12 South of Range N<sup>o</sup> 45 East, M<sup>t</sup> Diablo Meridian, Nevada, is strictly conformable to the field notes of the survey thereof on file in the Office, which have been examined and approved.  
Surveyor General's Office, *Matthew Ryle* Sur. Gen.  
Reno, Nevada, March 1<sup>st</sup> 1907.