

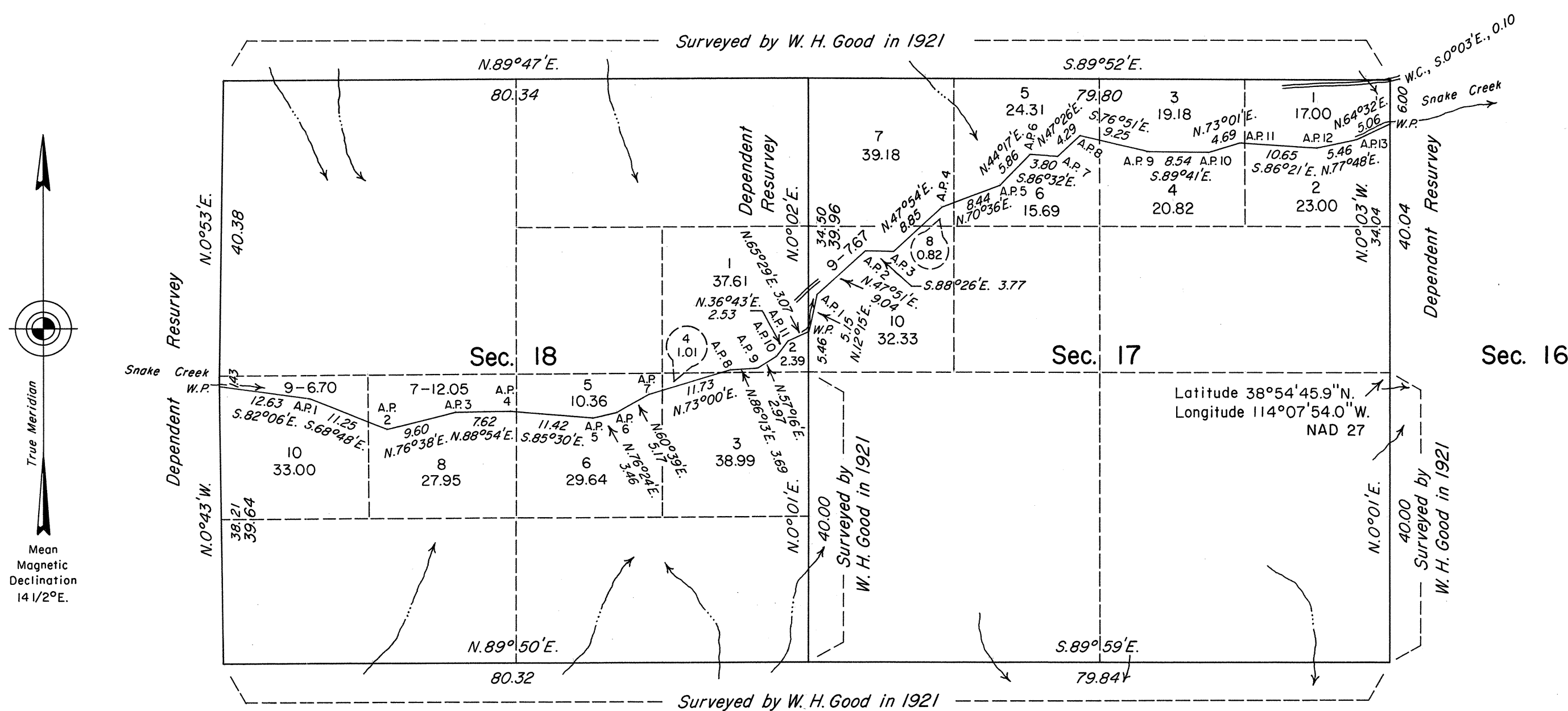
ORIGINAL

TOWNSHIP 12 NORTH, RANGE 70 EAST, OF THE MOUNT DIABLO MERIDIAN, NEVADA
DEPENDENT RESURVEY AND SURVEY

Surveyed by W. H. Good in 1921

Sec. 7

Sec. 8



History of the earlier surveys is contained in the field notes.

A dependent resurvey of a portion of the west boundary was executed concurrently under T. 12 N., R. 69 E., of this same Group.

This plat represents a dependent resurvey of a portion of the subdivisional lines, designed to restore the corners in their true original locations according to the best available evidence; and the survey of a traverse of the south bank of Snake Creek, through sections 17 and 18 of T. 12 N., R. 70 E., Mount Diablo Meridian, Nevada.

Lottings and areas, except as indicated hereon, are as shown on the plat approved June 30, 1922.

Survey executed by Stephen R. Lambeth, Cadastral Surveyor, beginning August 8, 1988 and completed August 23, 1988, under Supplemental Special Instructions dated August 5, 1988, for Group No. 650, Nevada.

UNITED STATES DEPARTMENT OF THE INTERIOR
BUREAU OF LAND MANAGEMENT

Reno, Nevada

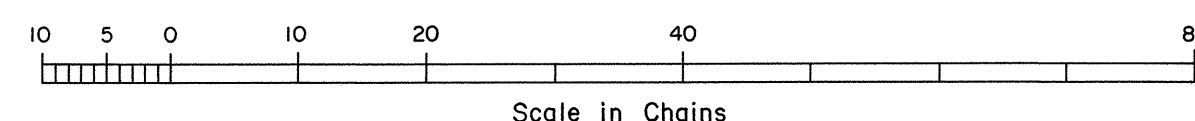
June 15, 1989

This plat is strictly conformable to the approved field notes, and the survey, having been correctly executed in accordance with the requirements of law and the regulations of this Bureau, is hereby accepted.

For the Director

Lacel E. Bland

Chief Cadastral Surveyor



T.12N., R.70E., M.D.M.