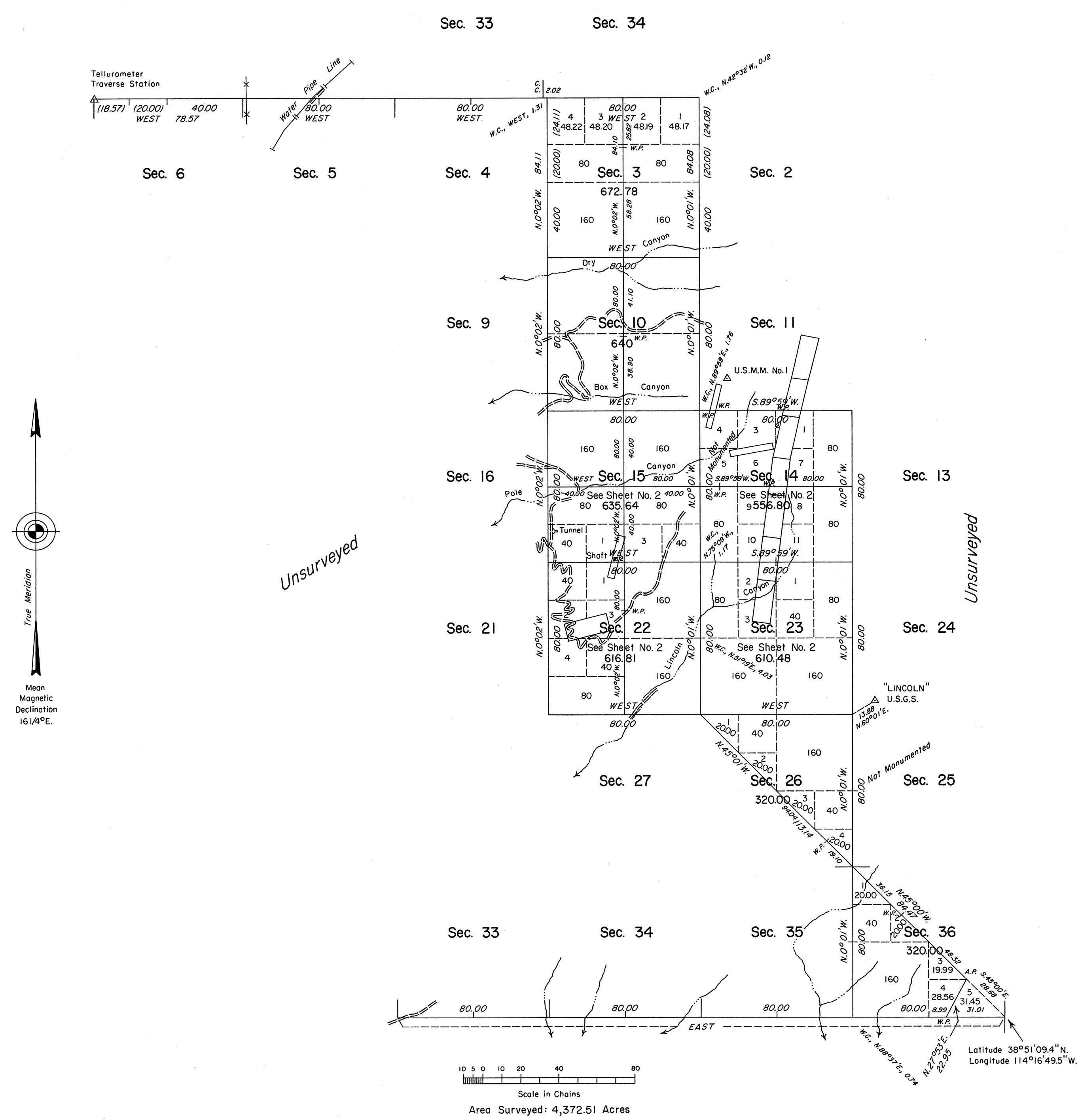


ORIGINAL

Sheet No. 1 of 2 Sheets

TOWNSHIP 12 NORTH, RANGE 68 EAST, OF THE MOUNT DIABLO MERIDIAN, NEVADA



History of the earlier surveys is contained in the field notes.

This plat, in two sheets, represents a dependent resurvey of Mineral Survey Nos. 37 and 40, and a portion of Mineral Survey No. 4289 and the remonumentation of certain corners of Mineral Survey Nos. 38 and 39, designed to restore the corners in their true original locations according to the best available evidence; and the survey of a portion of the south and north boundaries, a portion of the subdivisional lines, the subdivision of certain sections, and traverses through sections 26 and 36 of T. 12 N., R. 68 E., Mount Diablo Meridian, Nevada.

Unless otherwise indicated in the field notes, all courses and distances shown on the plat along the perimeter of the mineral segregation areas were taken or computed from the appropriate mineral survey record.

Survey executed by Stephen R. Lambeth, Cadastral Surveyor, beginning July 13, 1987 and completed August 31, 1987, under Special Instructions dated July 7, 1987, for Group No. 650, Nevada.

For enlargements of sections 14, 15, 22 and 23, see Sheet No. 2.

BUREAU OF LAND MANAGEMENT

Reno, Nevada

May 23, 1988

This plat is strictly conformable to the approved field notes, and the survey, having been correctly executed in accordance with the requirements of law and the regulations of this Bureau, is hereby accepted.

For the Director

Lael E. Bland

Chief Cadastral Surveyor

Latitude 38°51'09.4"N.
Longitude 114°16'49.5"W.

T.12N., R.68E., M.D.M.