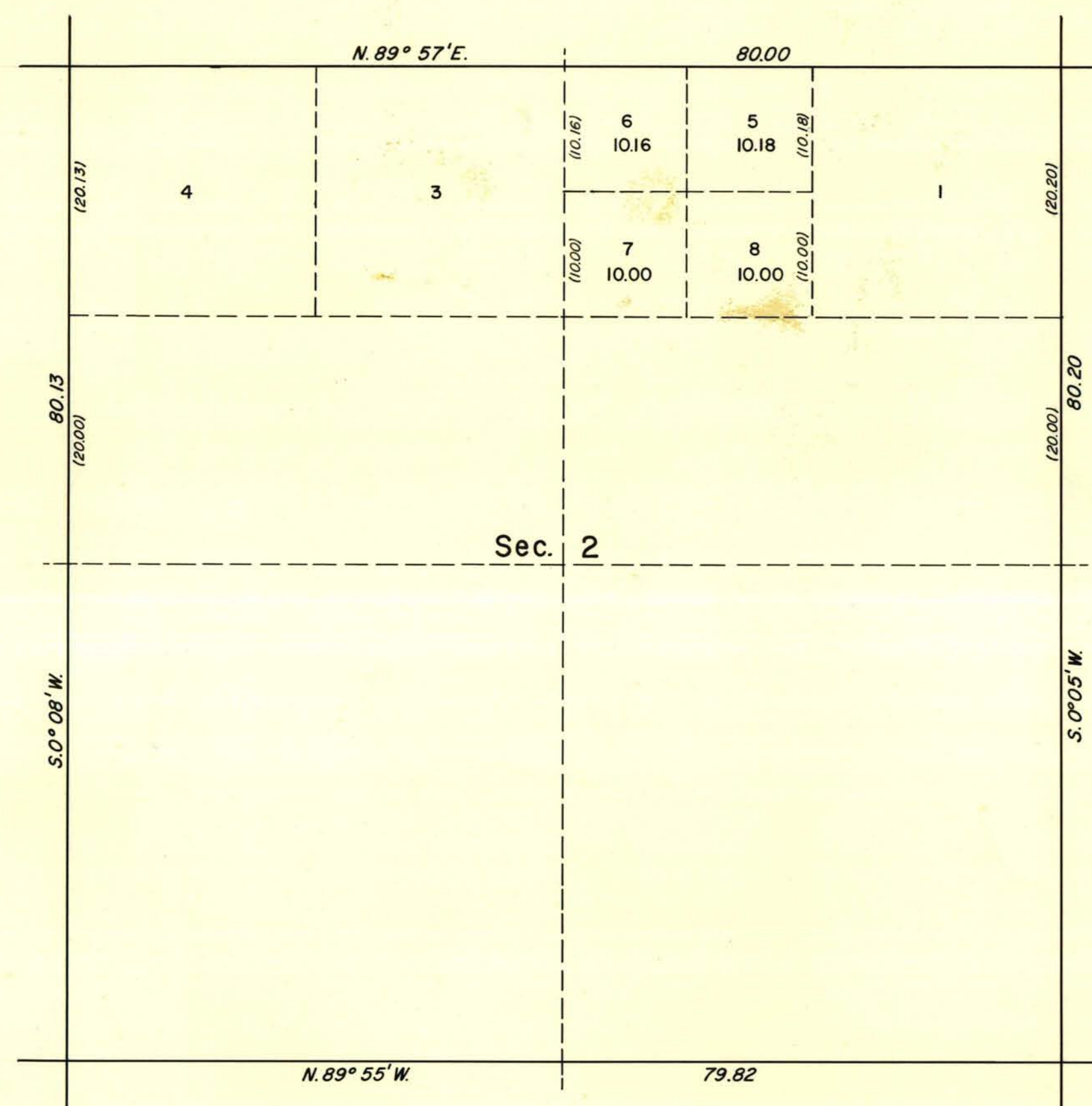


TOWNSHIP 12 NORTH, RANGE 67 EAST, OF THE MOUNT DIABLO MERIDIAN, NEVADA
SUPPLEMENTAL PLAT OF SECTION 2



This plat showing a subdivision of original lot 2, Sec. 2, T. 12 N., R. 67 E., Mount Diablo Meridian, Nevada, based upon the plat approved February 1, 1872, is prepared to accommodate proposed classification for disposal under the Recreation Act.

UNITED STATES DEPARTMENT OF THE INTERIOR
BUREAU OF LAND MANAGEMENT
Washington, D.C. April 24, 1962

This plat, showing amended lottings, is based upon the official records, and having been correctly prepared in accordance with the regulations, is hereby accepted.

For the Director

E. L. Huntington

Chief, Division of Engineering

0 5 10 20 30 40
SCALE IN CHAINS

3092-A

Sec. 2, T12N, R67E.