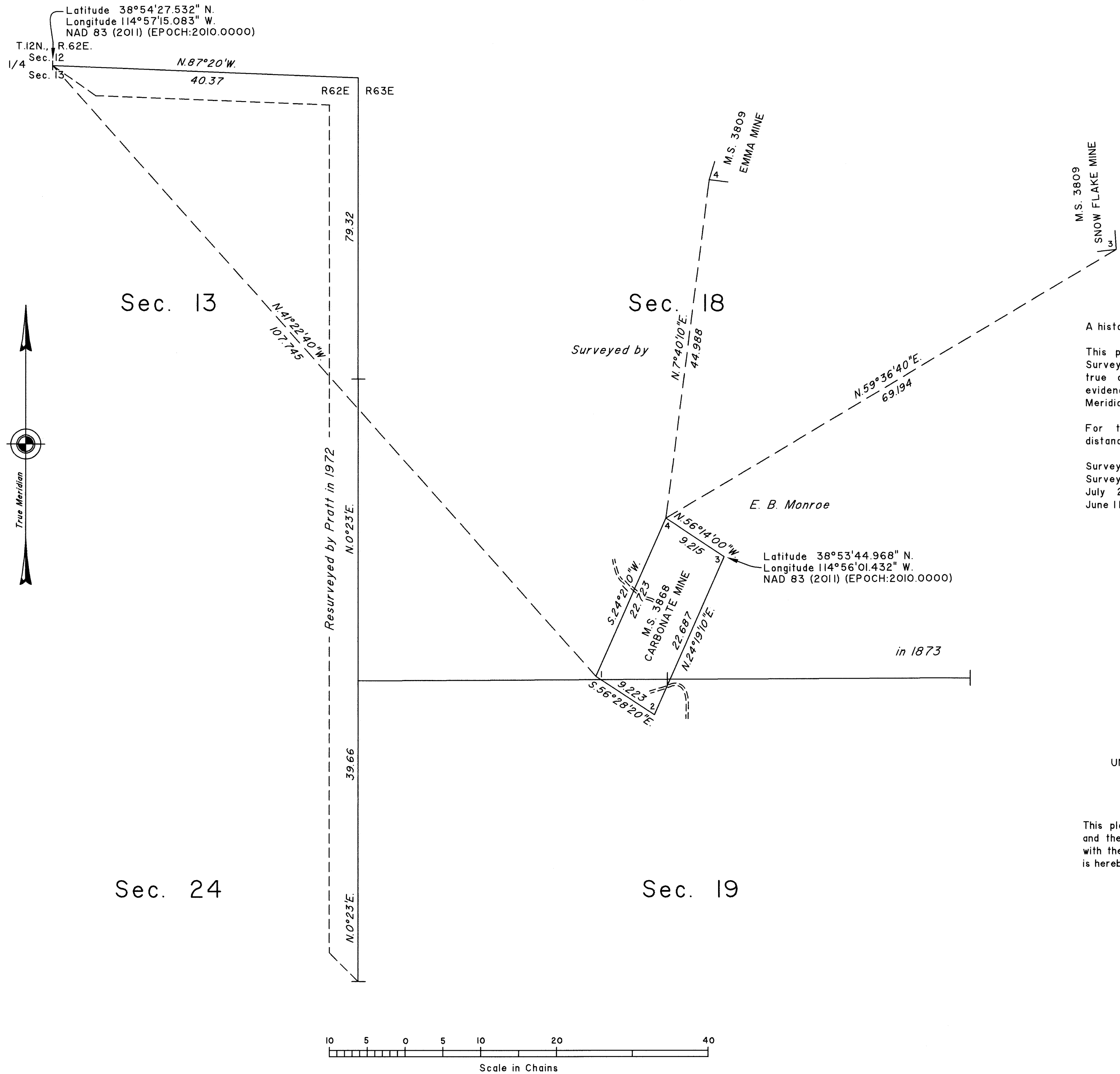


TOWNSHIP 12 NORTH, RANGE 63 EAST, OF THE MOUNT DIABLO MERIDIAN, NEVADA
DEPENDENT RESURVEY



A history of surveys is contained in the field notes.

This plat represents the dependent resurvey of Mineral Survey No. 3868, designed to restore the corners in their true original locations according to the best available evidence, Township 12 North, Range 63 East, Mount Diablo Meridian, Nevada.

For those surveyed lines not showing bearings and distances, refer to the official record of 1873.

Survey executed by Michael O. Jones, Cadastral Surveyor, beginning June 26, 2019 and completed July 2, 2019, pursuant to Special Instructions dated June 11, 2019, for Group No. 992, Nevada.

UNITED STATES DEPARTMENT OF THE INTERIOR
BUREAU OF LAND MANAGEMENT

Reno, Nevada January 14, 2020

This plat is strictly conformable to the approved field notes, and the survey, having been correctly executed in accordance with the requirements of law and the regulations of this Bureau, is hereby accepted.

For the Director

Michael O. Hummering

Chief Cadastral Surveyor for Nevada