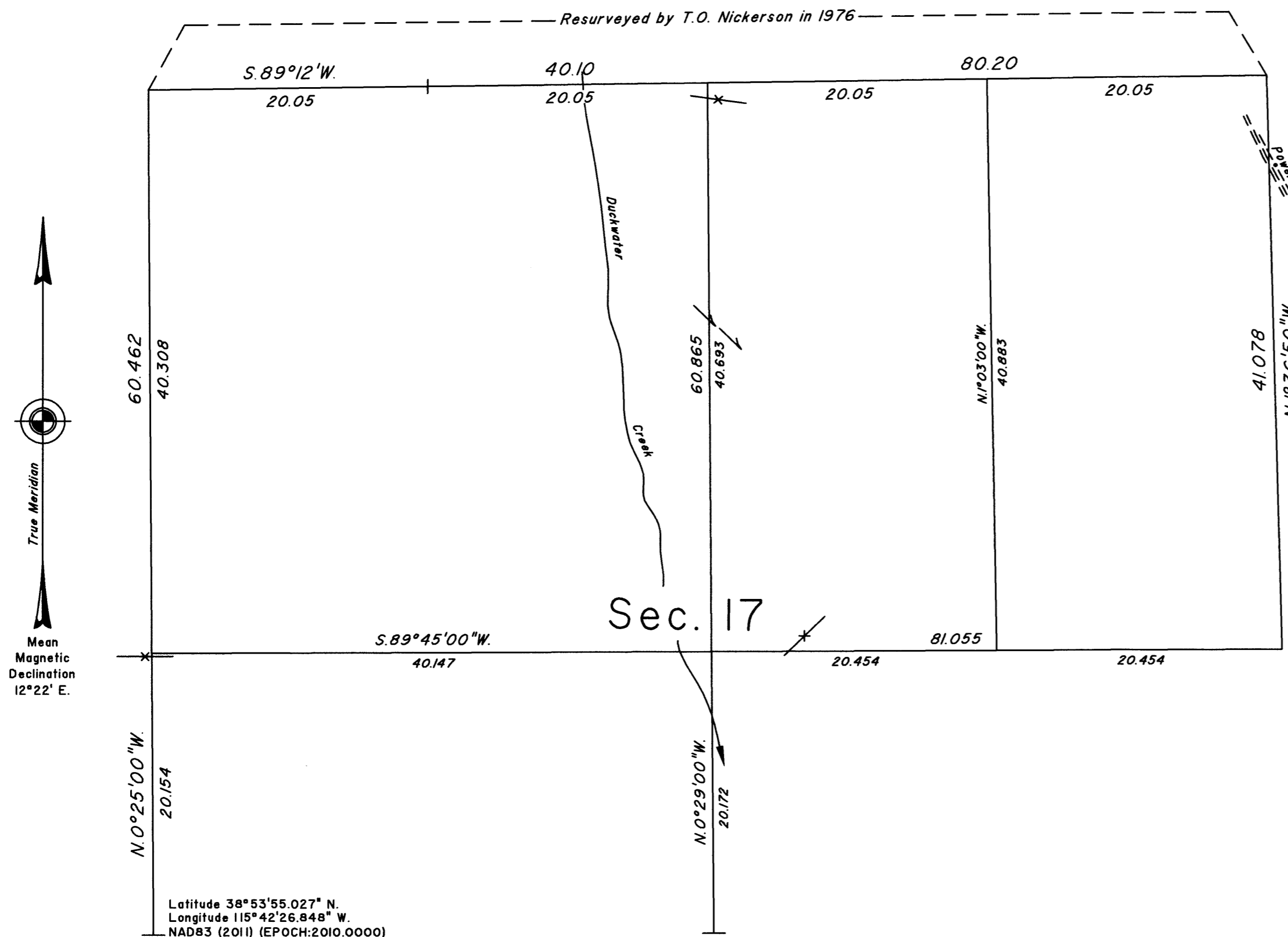


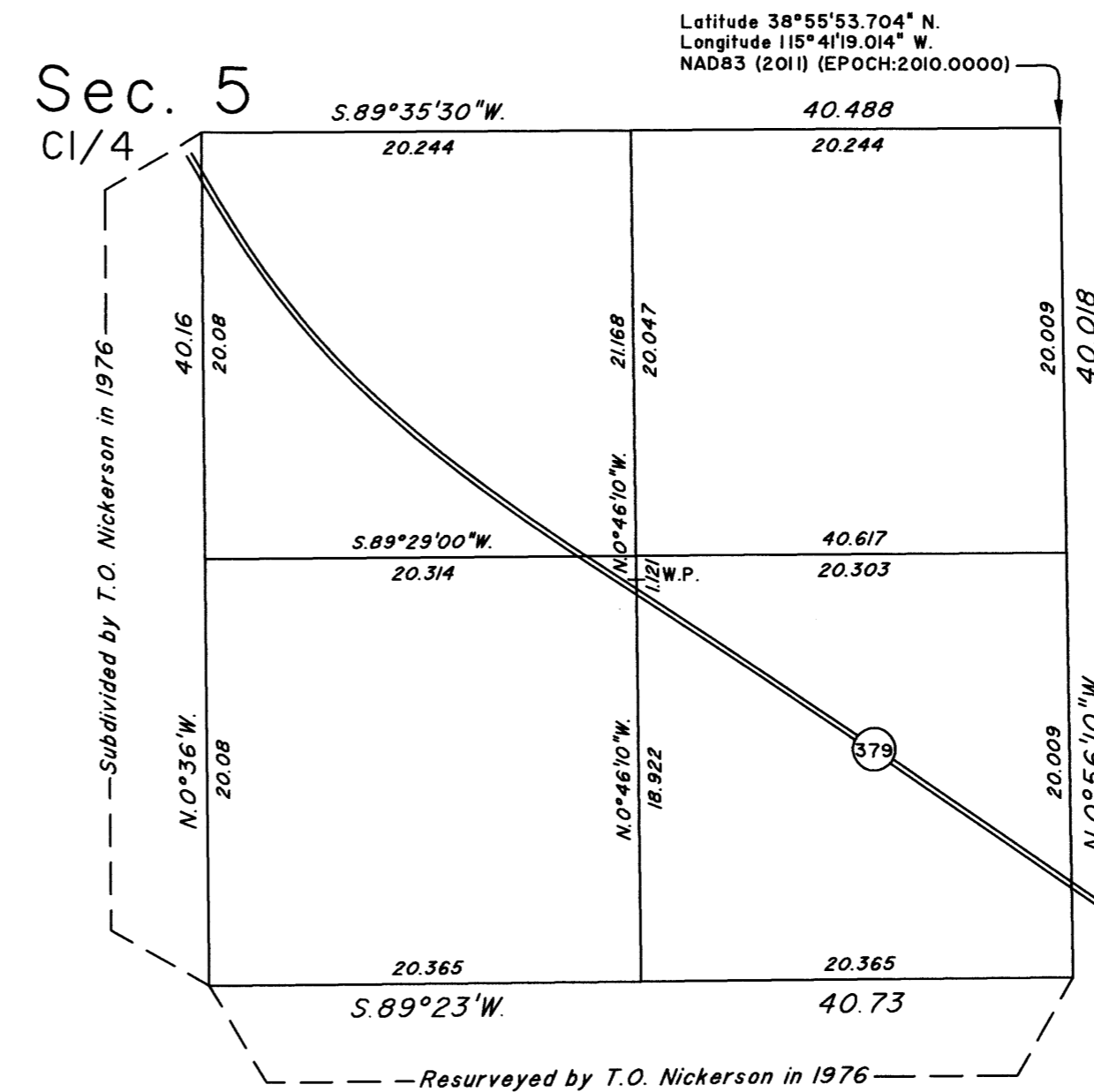
TOWNSHIP 12 NORTH, RANGE 56 EAST, OF THE MOUNT DIABLO MERIDIAN, NEVADA

DEPENDENT RESURVEY AND FURTHER SUBDIVISION OF SECTION

OFFICIALLY FILED
NEVADA STATE OFFICE
at 10:00 AM on
DEC 12 2019



Sec. 5 C1/4



A history of surveys is contained in the field notes.

This plat represents the dependent resurvey of portions of the subdivisional lines and portions of the subdivision-of-section lines of sections 5 and 17, designed to restore the corners in their true original locations according to the best available evidence, and the further subdivision of sections 5 and 17, Township 12 North, Range 56 East, Mount Diablo Meridian, Nevada.

Except as indicated hereon, the lottings and areas are as shown on the plat approved December 12, 1870 and the plat accepted December 31, 1979.

Survey executed by Brandon G. Courtright, Cadastral Surveyor, beginning July 27, 2017 and completed October 4, 2019, pursuant to Special Instructions dated July 25, 2017, and Amended Special Instructions dated October 3, 2019 for Group No. 974, Nevada.

UNITED STATES DEPARTMENT OF THE INTERIOR
BUREAU OF LAND MANAGEMENT

Reno, Nevada December 3, 2019

This plat is strictly conformable to the approved field notes, and the survey, having been correctly executed in accordance with the requirements of law and the regulations of this Bureau, is hereby accepted.

For the Director

Chief Cadastral Surveyor for Nevada

