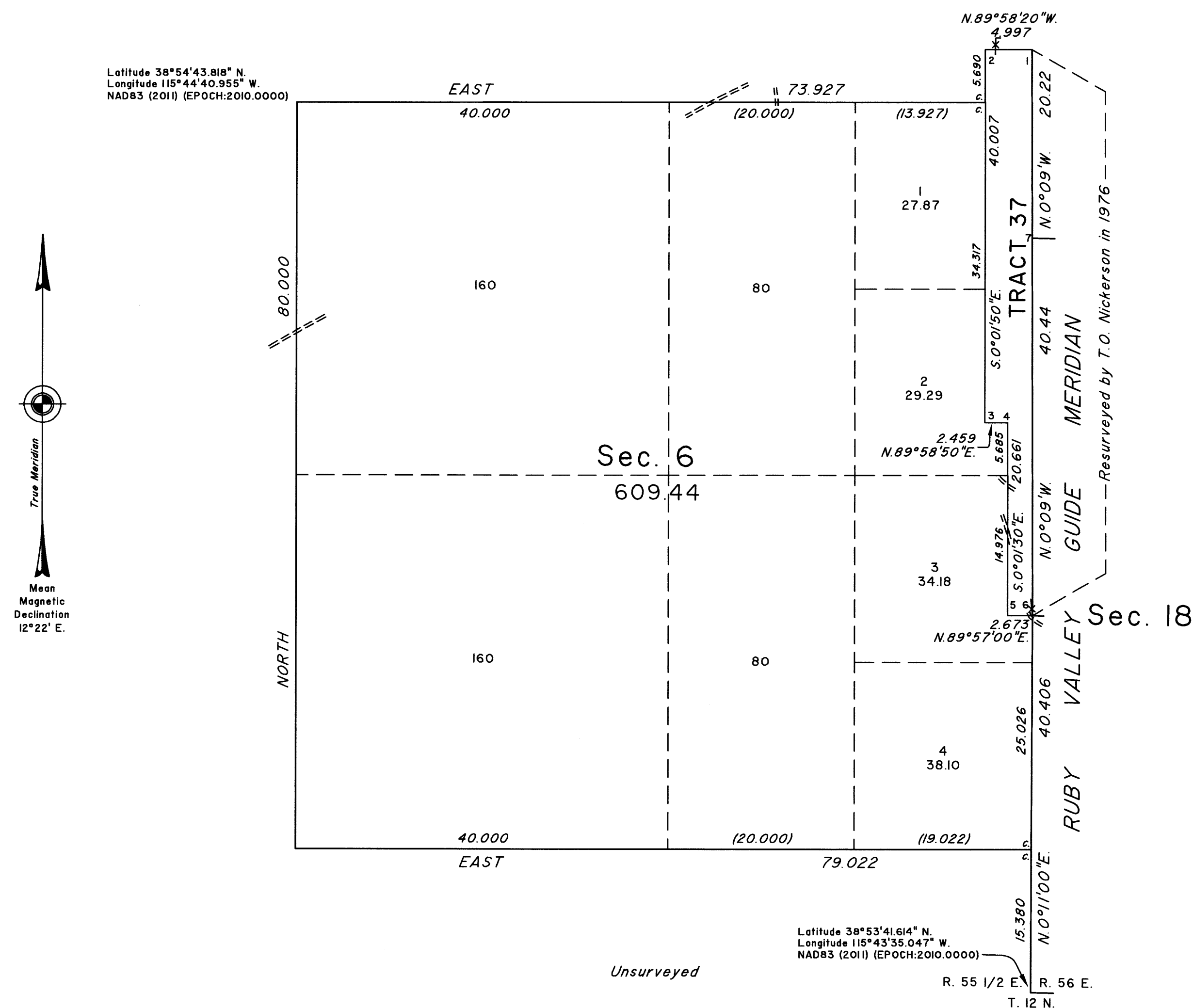


DEPENDENT RESURVEY AND SURVEY



Survey executed by Brandon G. Courtright, Cadastral Surveyor, beginning July 27, 2017 and completed October 4, 2019, pursuant to Special Instructions dated July 25, 2017, and Amended Special Instructions dated October 3, 2019 for Group No. 974, Nevada.

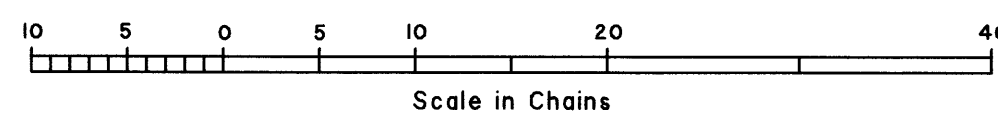
This plat is strictly conformable to the approved field notes, and the survey, having been correctly executed in accordance with the requirements of law and the regulations of this Bureau, is hereby accepted.

For the Director

Michael O. Humphreys

Chief Cadastral Surveyor for Nevada

TOTAL AREA SURVEYED = 609.44 ACRES



BGC/BKG

T.12N., R.55 1/2E., M.D.M.