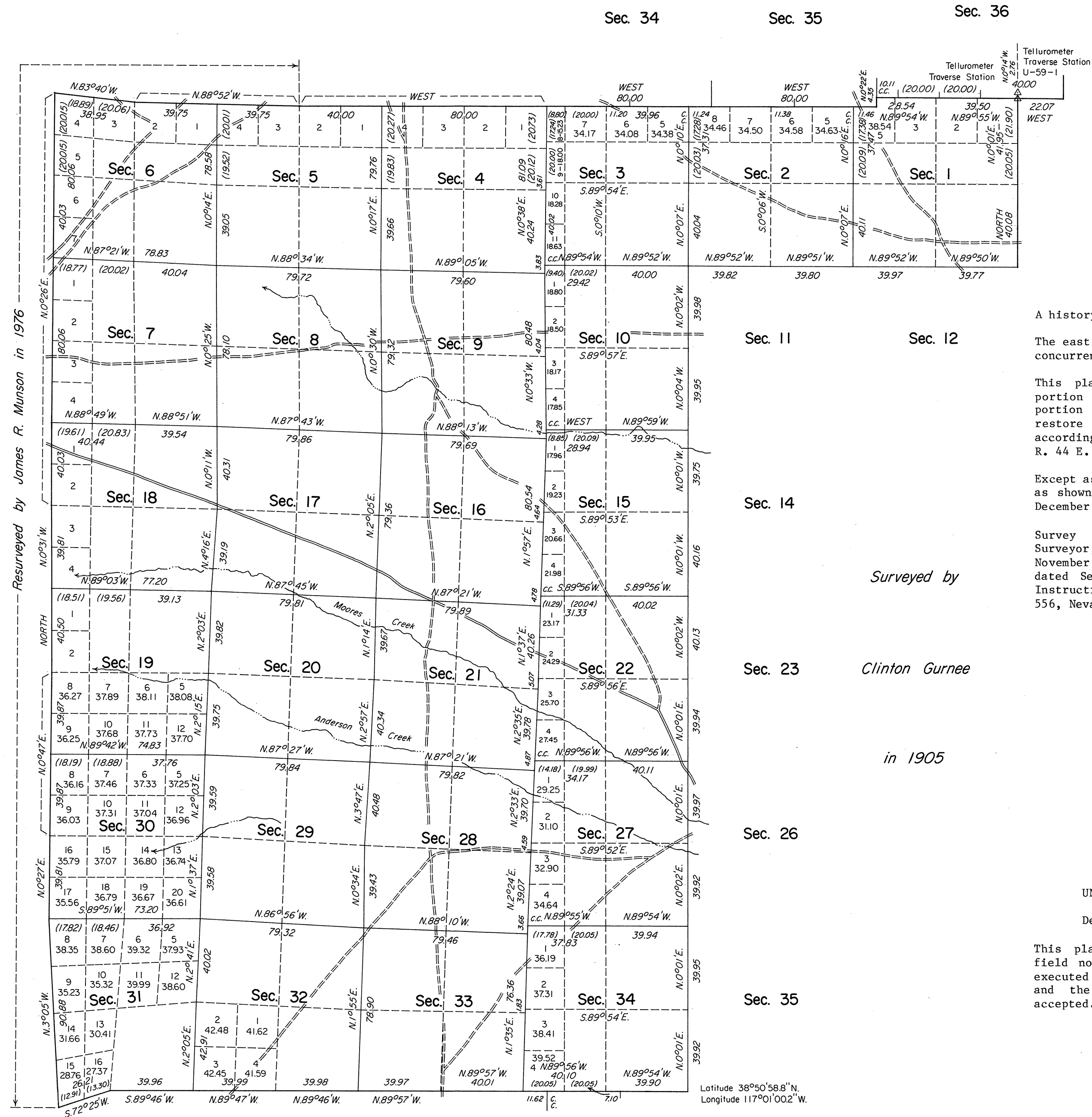


# TOWNSHIP 12 NORTH, RANGE 44 EAST, OF THE MOUNT DIABLO MERIDIAN, NEVADA

## DEPENDENT RESURVEY

OFFICIALLY FILED  
NEVADA STATE OFFICE  
10:00 AM JUNE 15, 1981



A history of surveys is contained in the field notes.

The east  $4\frac{1}{2}$  miles of the north boundary was resurveyed concurrently under T. 13., R. 44 E., of this group.

This plat represents the dependent resurvey of a portion of the south and east boundaries, and a portion of the subdivisional lines, designed to restore the corners in their true original locations according to the best available evidence, T. 12 N., R. 44 E., Mount Diablo Meridian, Nevada.

Except as indicated hereon, the lottings and areas are as shown on the plats approved October 13, 1873 and December 31, 1906.

Survey executed by Robert A. Pratt, Cadastral Surveyor, beginning April 14, 1978, and completed November 27, 1978, pursuant to Special Instructions dated September 21, 1977, and Supplemental Special Instructions dated November 21, 1978, for Group No. 556, Nevada.

Surveyed by

Clinton Gurnee

in 1905

UNITED STATES DEPARTMENT OF THE INTERIOR  
BUREAU OF LAND MANAGEMENT  
Denver, Colorado July 8, 1980

This plat is strictly conformable to the approved field notes, and the survey, having been correctly executed in accordance with the requirements of law and the regulations of this Bureau, is hereby accepted.

For the Director

Chief, Cadastral Survey  
Examination and Approval Staff

Sec. 4                      Sec. 3

