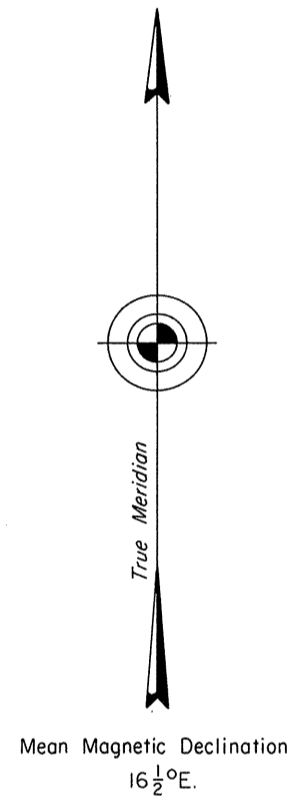
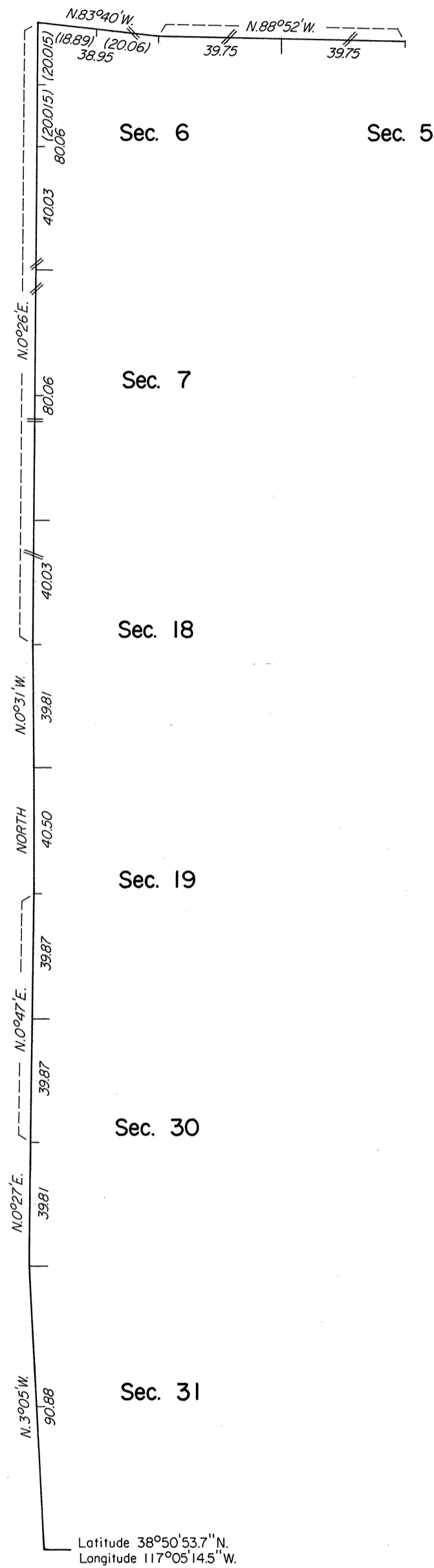


# TOWNSHIP 12 NORTH, RANGE 44 EAST, OF THE MOUNT DIABLO MERIDIAN, NEVADA

## DEPENDENT RESURVEY



Surveyed by

A. J. Hatch, D. H. Barker and

E. L. Bridges in 1873

A history of surveys is contained in the field notes.

This plat represents a dependent resurvey of the west boundary and a portion of the north boundary of T. 12 N., R. 44 E., Mount Diablo Meridian, Nevada, designed to restore the corners in their true original locations according to the best available evidence.

Survey executed by James R. Munson, Cadastral Surveyor, September 28 to December 28, 1976, under Special Instructions dated September 2, 1976, and Supplemental Special Instructions dated December 16, 1976, for Group No. 545, Nevada.

UNITED STATES DEPARTMENT OF THE INTERIOR  
BUREAU OF LAND MANAGEMENT  
Washington, D.C. April 20, 1978

This plat is strictly conformable to the approved field notes, and the survey, having been correctly executed in accordance with the requirements of law and the regulations of this Bureau, is hereby accepted.

For the Director

*Bernard W. Hatch*  
Chief, Division of Cadastral Survey

