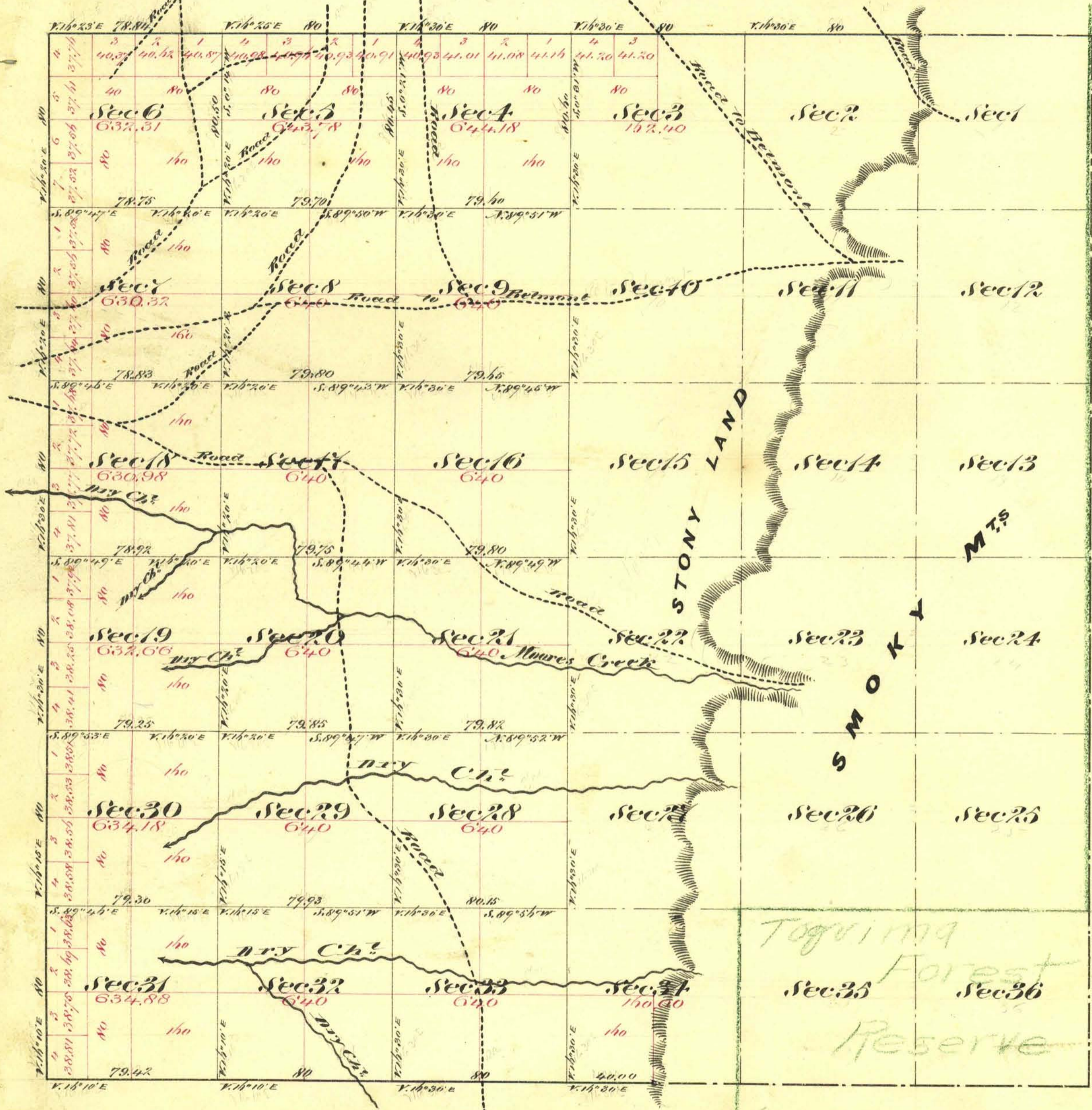


Township N<sup>o</sup> 12 North Range N<sup>o</sup> 44 East Mount Diablo Meridian



Aggregate Area of Public Land Surveyed 11,805.59 Acres  
 Estimated " " Mountains (unsurveyed) 11,206.00 "  
Aggregate 23,011.59 "

Commenced August 18<sup>th</sup> 1873  
 Completed " 21<sup>st</sup> "

Togwima  
 Forest  
 Reserve

Surveys Designated	By Whom Surveyed	Date of Contract	Am <sup>t</sup> of Surveys No. chs. lts.	When Surveyed	Acres
Township Lines	A. Hatch, D. H. Parker & L. Bridges	June 14 <sup>th</sup> 1873	14 38 26	1873	57
Subdivision Lines	" " " " "	" " "	32 74 65	August 1873	"

The above Map of Township N12 North Range N44 East Mount Diablo Meridian is strictly conformable to the field notes of the surveys thereof on file in this Office which have been examined and approved  
 U.S. Surveyor General's Office  
 Virginia City, Nevada  
 October 13<sup>th</sup> 1873

E. S. Davis  
 U.S. Surveyor General Nevada  
 T 12 N, R 44 E