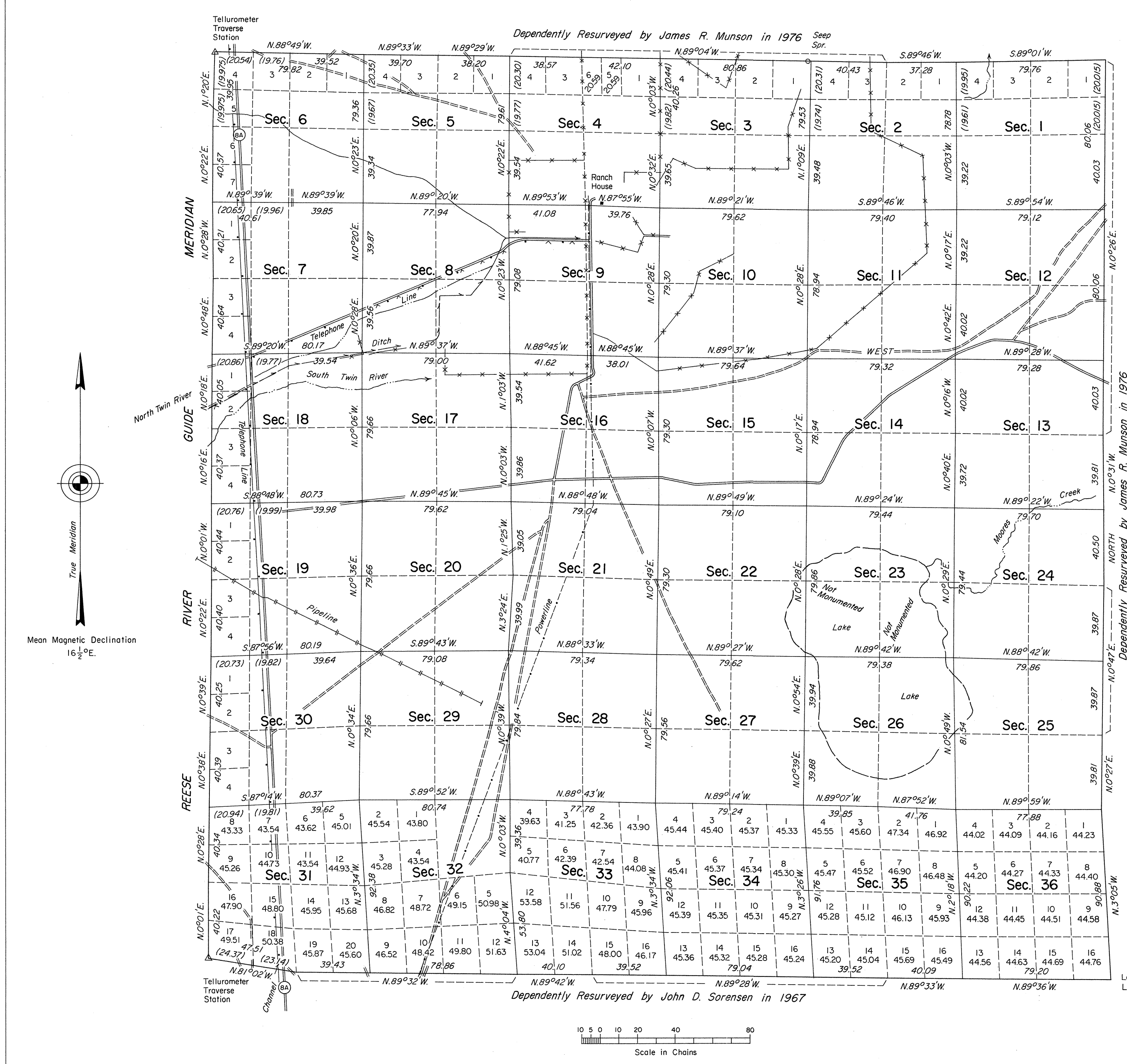


OFFICIALLY FILED
NEVADA STATE OFFICE
April 11, 1980

TOWNSHIP 12 NORTH, RANGE 43 EAST, OF THE MOUNT DIABLO MERIDIAN, NEVADA

DEPENDENT RESURVEY



A history of surveys is contained in the field notes.

This plat represents the dependent resurvey of the west boundary and subdivisional lines, designed to restore the corners in their true original locations according to the best available evidence, of T. 12 N., R. 43 E., Mount Diablo Meridian, Nevada.

Except as indicated hereon, the lottings and areas are as shown on the plat approved October 13, 1873.

Survey executed by Robert A. Pratt, Cadastral Surveyor, beginning June 22, 1978 and completed August 22, 1979, pursuant to Special Instructions dated September 21, 1977, for Group No. 556, Nevada.

UNITED STATES DEPARTMENT OF THE INTERIOR
BUREAU OF LAND MANAGEMENT
Denver, Colorado March 25, 1980

This plat is strictly conformable to the approved field notes, and the survey, having been correctly executed in accordance with the requirements of law and the regulations of this Bureau, is hereby accepted.

For the Director

J. Workes

Chief, Cadastral Survey
Examination and Approval Staff

Latitude 38°50'53.7"N.
Longitude 117°05'14.5"W.