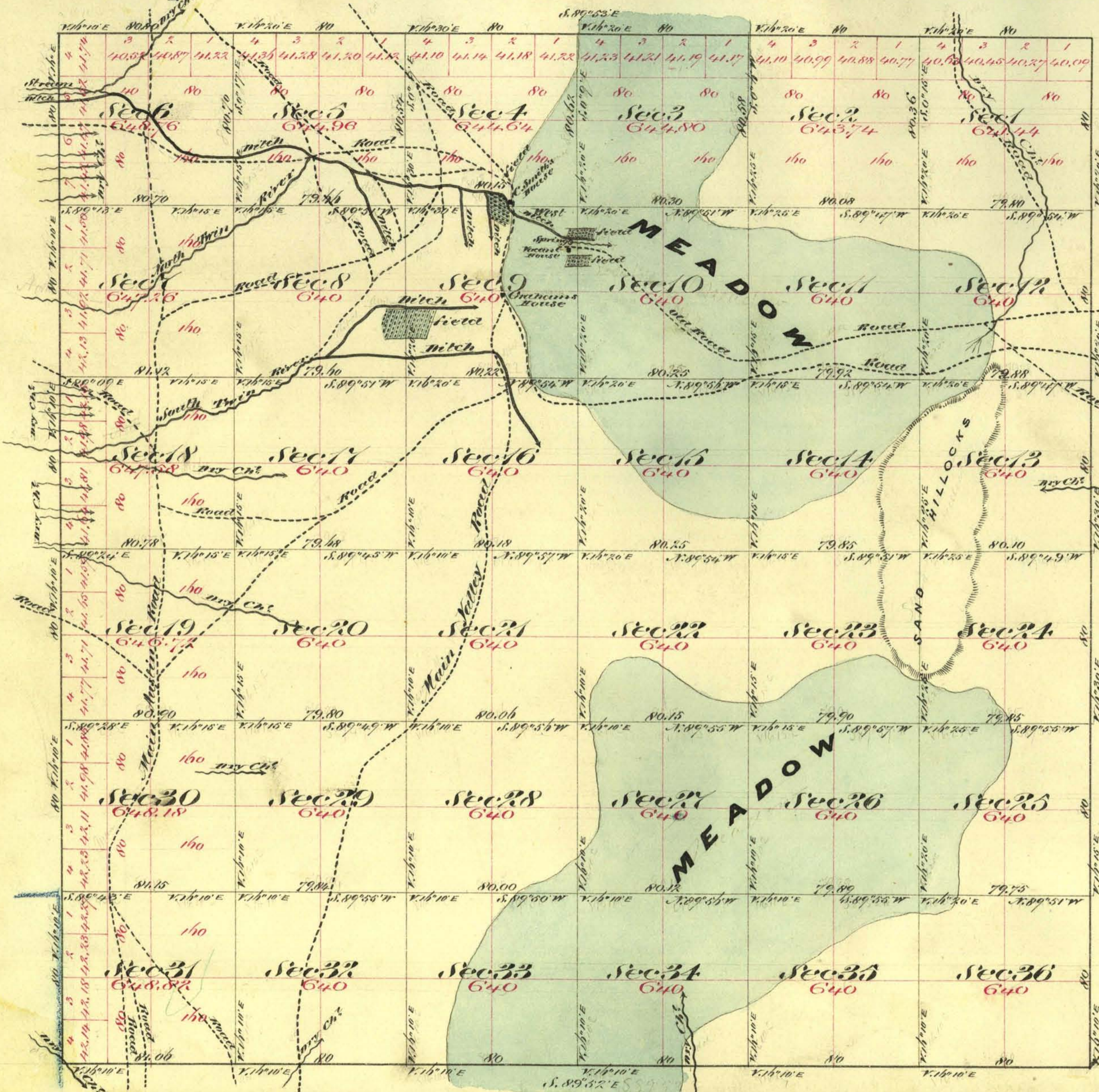


Township N^o 12 North

Range N^o 43 East

Mount Diablo Meridian



Aggregate Area of Public Land 23,106.90 Acres

Reserve Cont 242

Commenced August 22nd 1873
Completed " 28th "

| Surveys Designated | By Whom Surveyed | Date of Contract | Am't of Survey | When Surveyed |
|------------------------|---|----------------------------|----------------|---------------|
| West Boundary | G. C. Tracy | July 2 nd 1867 | 5 00 00 | 1867 |
| Rest of Township Lines | A. Hatch, D. H. Drake, T. E. L. Pringle | June 17 th 1873 | 18 01 86 | 1873 |
| Subdivision Lines | " " " " " " | " " " " " " | 60 06 73 | August 1873 |

3
57
1

The above Map of Township N12 North, Range N43 East, Mount Diablo Meridian is strictly conformable to the field notes of surveys thereof on file in this office which have been examined and approved
No. 1 Surveyor General's Office
Virginia City Nevada
October 13th 1873

E. S. Davis
No. 1 Surveyor General Nev.