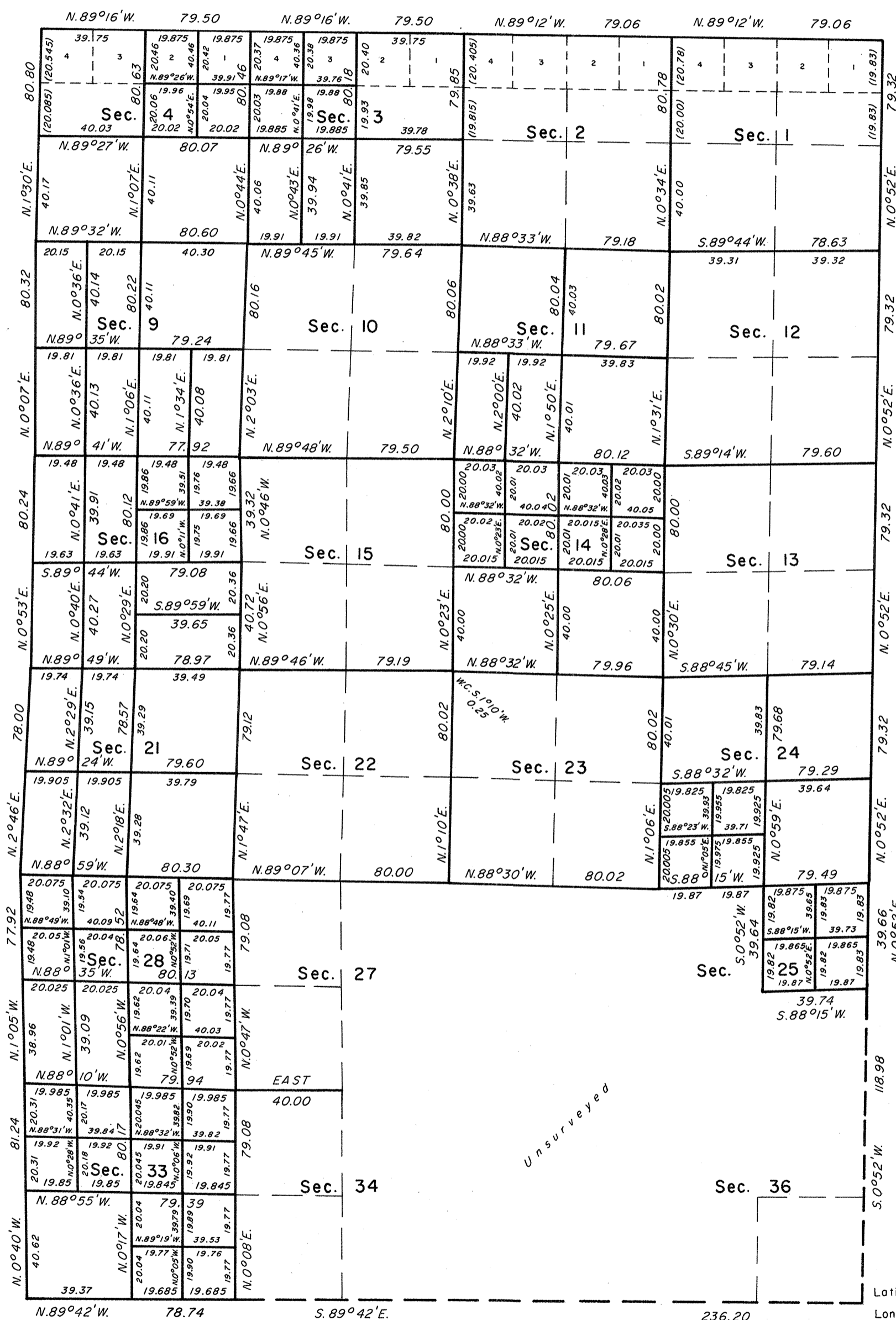


230417
January 19, 1981

OFFICIALLY FILED
NEVADA STATE OFFICE

TOWNSHIP 12 NORTH, RANGE 40 EAST, OF THE MOUNT DIABLO MERIDIAN, NEVADA

DEPENDENT RESURVEY AND SUBDIVISION



A history of surveys is contained in the field notes.

This plat represents the dependent resurvey of the east boundary and portions of the south and north boundaries and subdivisional lines, designed to restore the corners in their true original locations according to the best available evidence, and the subdivision of certain sections, T. 12 N., R. 40 E., Mount Diablo Meridian, Nevada.

The lottings and areas are as shown on the plat approved September 8, 1873.

Survey executed by Stephen D. Hardin and Ronald W. Scherler, Cadastral Surveyors, beginning October 7, 1975, and completed October 14, 1976, pursuant to Special Instructions dated June 18, 1975, for Group No. 528, Nevada.

UNITED STATES DEPARTMENT OF THE INTERIOR
BUREAU OF LAND MANAGEMENT
Denver, Colorado December 30, 1980

This plat is strictly conformable to the approved field notes, and the survey, having been correctly executed in accordance with the requirements of law and the regulations of this Bureau, is hereby accepted.

For the Director

Chief, Cadastral Survey
Examination and Approval Staff

Latitude 38° 51' 30" N.
Longitude 117° 25' 23" W.

