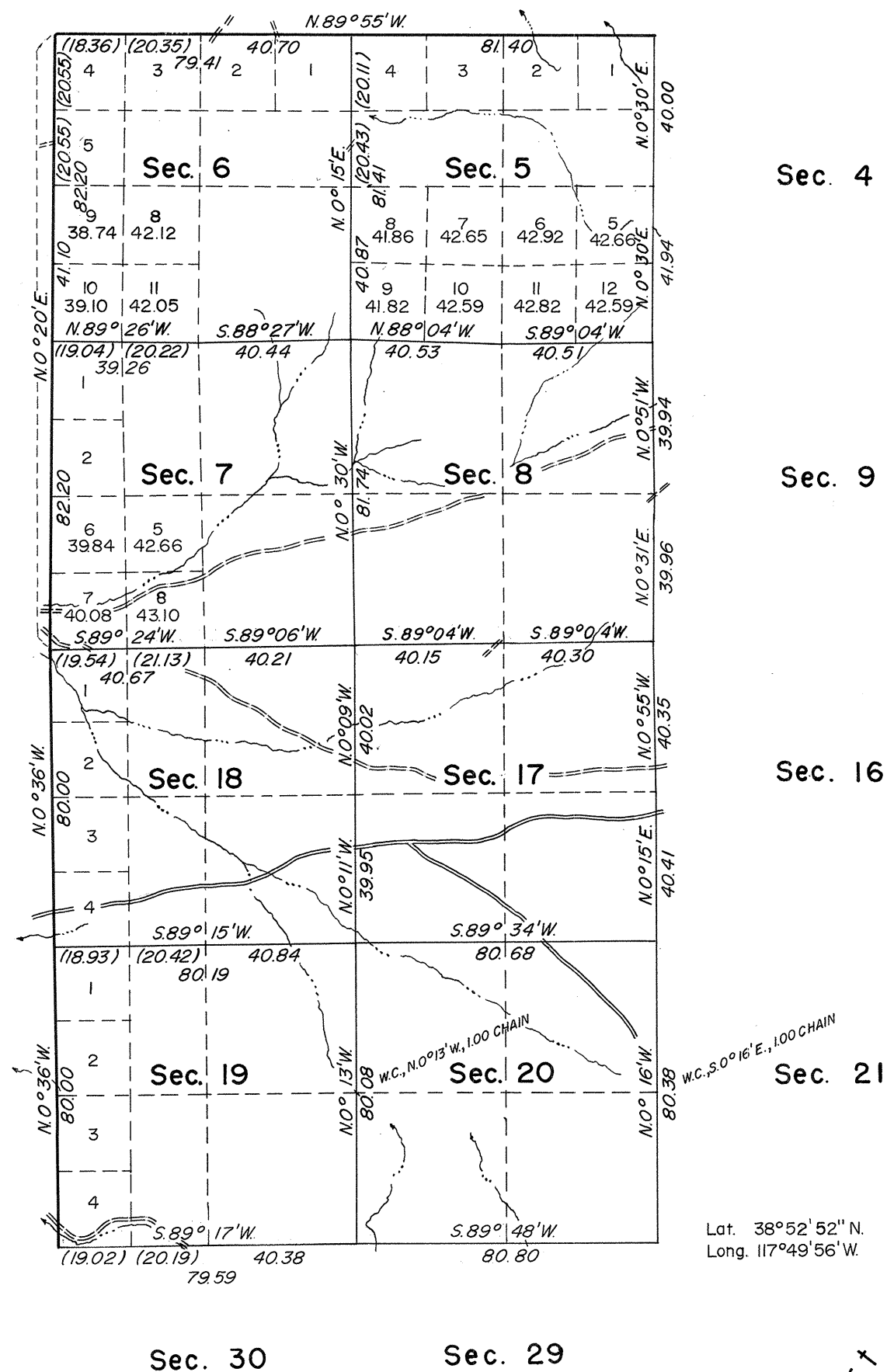


TOWNSHIP 12 NORTH, RANGE 37 EAST, OF THE MOUNT DIABLO MERIDIAN, NEVADA

OFFICIALLY FILED
NEVADA LAND OFFICE
10:00 A.M. JANUARY 31, 1966

DEPENDENT RESURVEY



History of earlier surveys is contained in the field notes. The west boundary was resurveyed concurrently with this group.

This plat represents a dependent resurvey of a portion of the north and west boundaries and a portion of the subdivisional lines, designed to restore the corners in their true original locations according to the best available evidence. Except as indicated hereon, lot-tings and areas are as shown upon the plat approved June 14, 1883.

These surveys were executed by Eldon W. Sibley, Cadastral Surveyor, August 8 to September 5, 1962, under Special Instructions dated June 5, 1962, for Group No. 401, Nevada.

UNITED STATES DEPARTMENT OF THE INTERIOR
BUREAU OF LAND MANAGEMENT
Washington, D. C. December 17, 1965

This plat is strictly conformable to the approved field notes, and the survey, having been correctly executed in accordance with the requirements of law and the regulations of this Bureau, is hereby accepted.

For the Director

E. Sibley
Chief, Division of Engineering

1117-A

T12N R37E