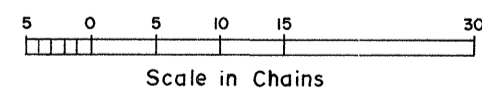
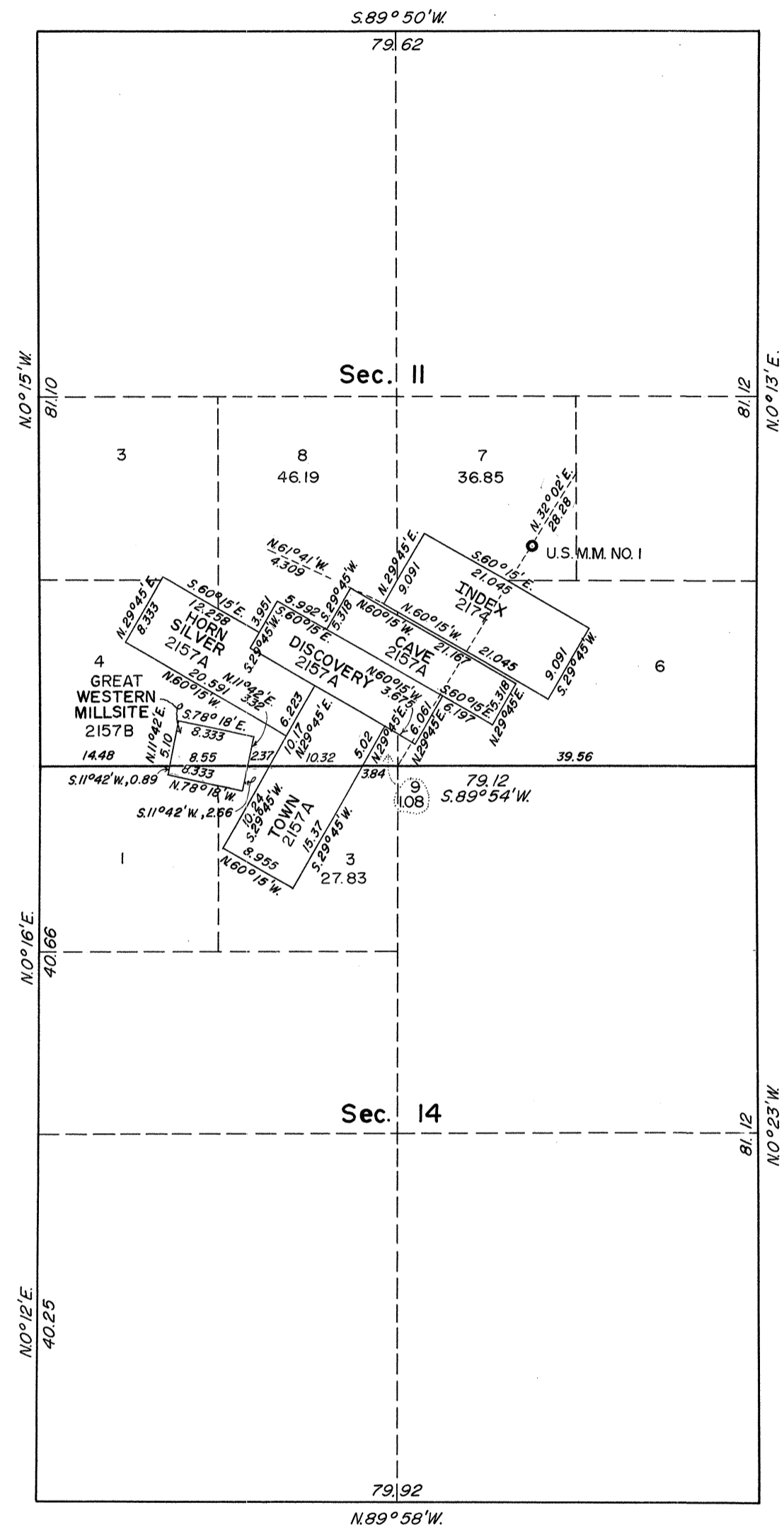


TOWNSHIP 12 NORTH, RANGE 36 EAST, OF THE MOUNT DIABLO MERIDIAN, NEVADA

OFFICIALLY FILED
NEVADA LAND OFFICE
10:00 A.M. JAN. 31, 1966

Sheet 3 of 3 Sheets

Reference should be made to Sheet No. 1,
for survey information.



UNITED STATES DEPARTMENT OF THE INTERIOR
BUREAU OF LAND MANAGEMENT
Washington, D. C. December 17, 1965

This plat is strictly conformable to the approved field notes, and the survey, having been correctly executed in accordance with the requirements of law and the regulations of this Bureau, is hereby accepted.

For the Director

Ed Summerton
Chief, Division of Engineering

1070-E3 (Sheet 3 of 3)

T12N, R36E

RTS