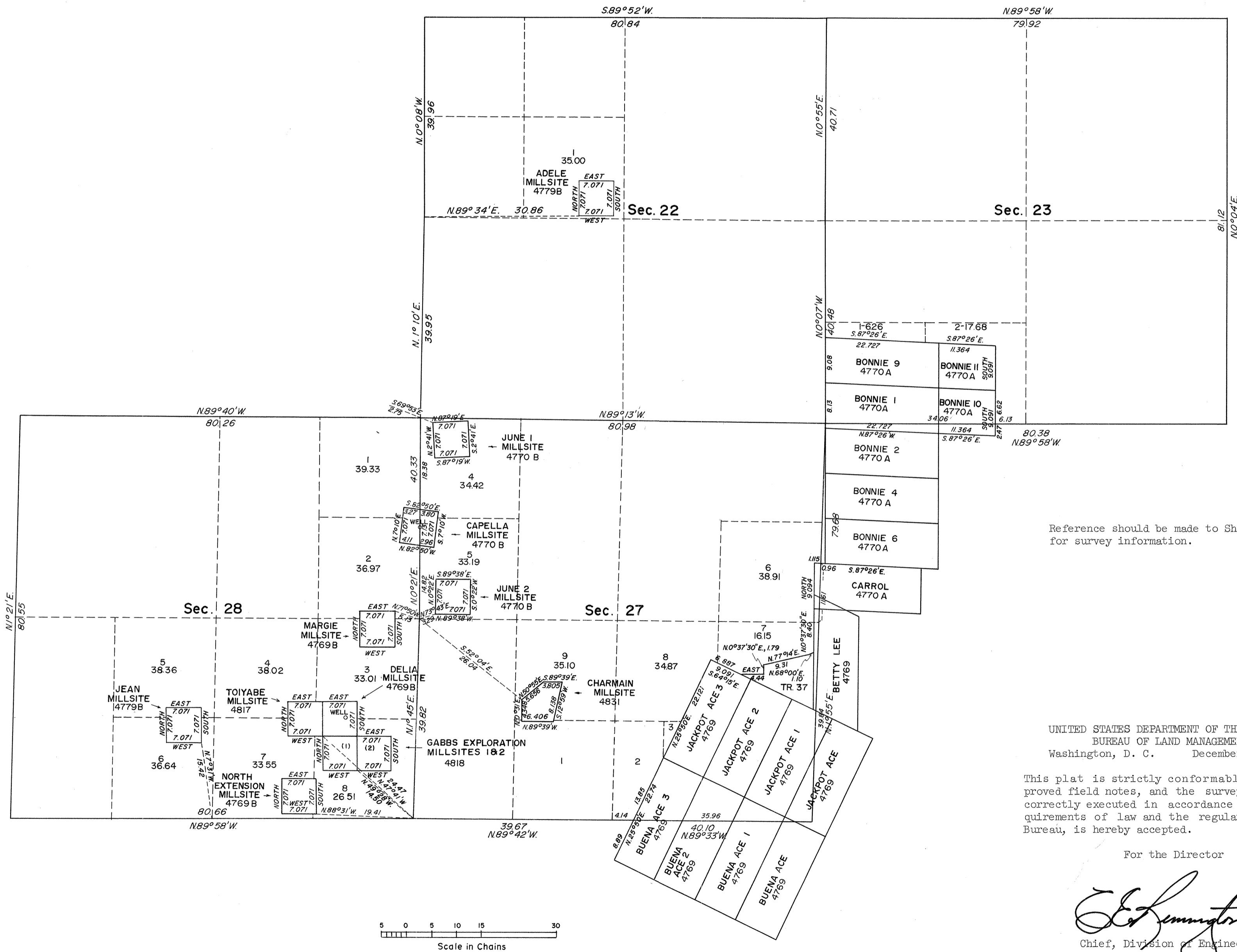


TOWNSHIP 12 NORTH, RANGE 36 EAST, OF THE MOUNT DIABLO MERIDIAN, NEVADA

DEPENDENT RESURVEY

Sheet 2 of 3 Sheets



Reference should be made to Sheet No. 1, for survey information.

UNITED STATES DEPARTMENT OF THE INTERIOR
 BUREAU OF LAND MANAGEMENT
 Washington, D. C. December 17, 1965

This plat is strictly conformable to the approved field notes, and the survey, having been correctly executed in accordance with the requirements of law and the regulations of this Bureau, is hereby accepted.

For the Director

E. L. Huntington
 Chief, Division of Engineering

1070-E-2 (sheet 2 of 3)

T12 N, R36 E

RTB