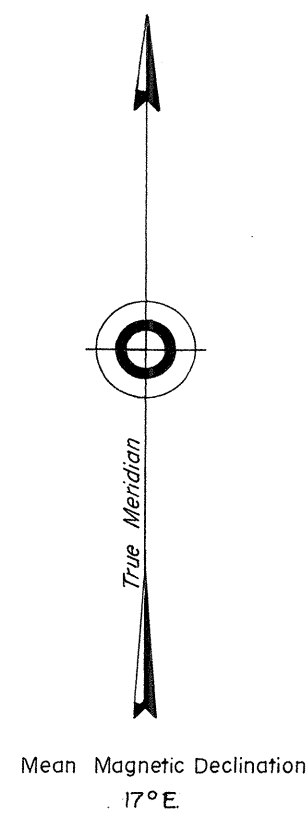
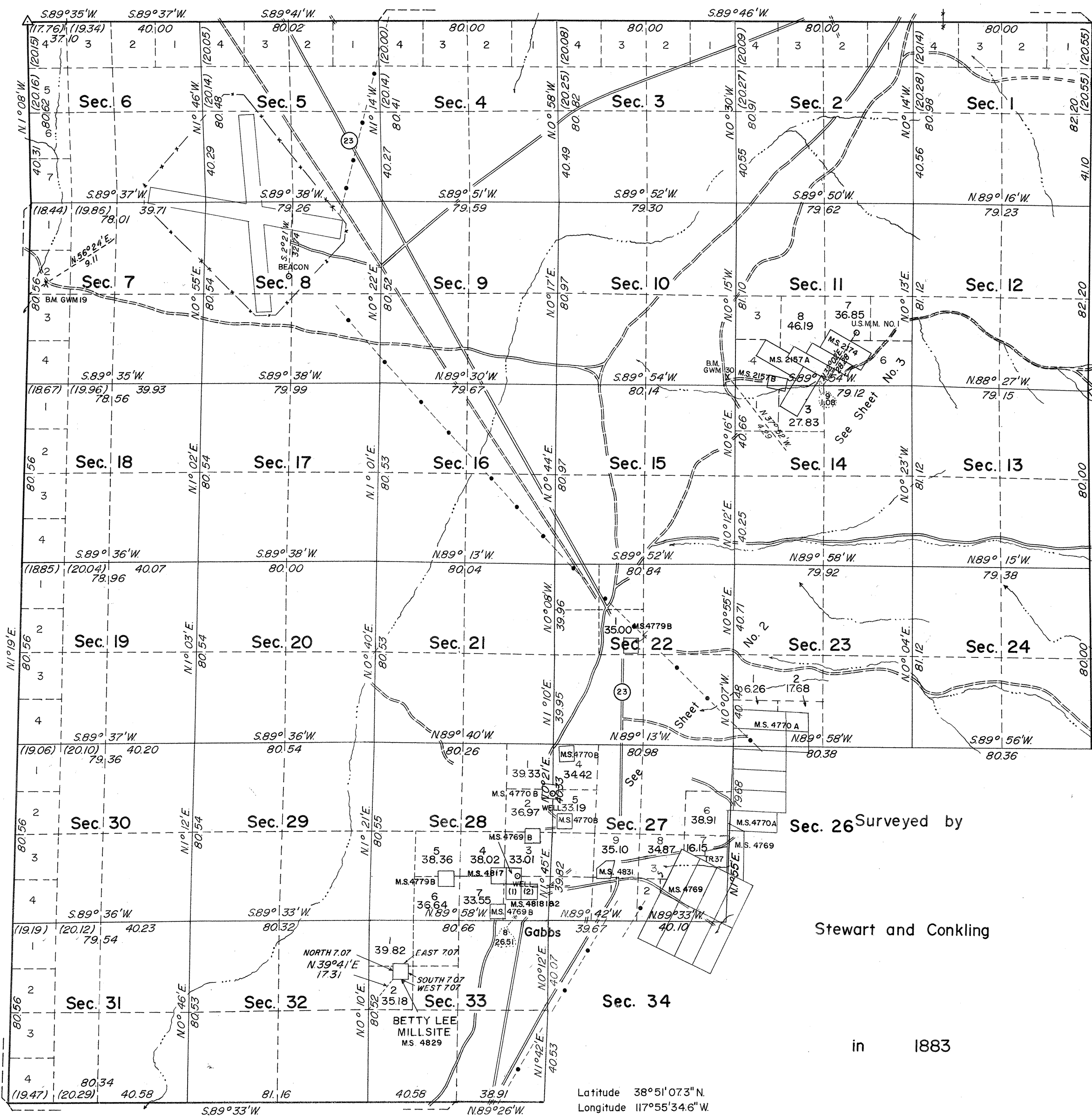


TOWNSHIP 12 NORTH, RANGE 36 EAST, OF THE MOUNT DIABLO MERIDIAN, NEVADA
DEPENDENT RESURVEY

OFFICIALLY FILED
NEVADA LAND OFFICE
10:00 AM, JAN 31, 1966

Sheet 1 of 3 Sheets

NPD "NYB 027L"
Lat. 38°56'21.795"N
Long. 117°58'49.377"W



History of earlier surveys is contained in the field notes.

This plat, in three sheets, represents a dependent resurvey of the north and west boundaries, a portion of the south and east boundaries, a portion of the subdivisional lines, and a portion of the boundaries of Mineral Surveys Nos. 2157A, 2157B, 4769, 4770A, and 4770B, designed to restore all corners in their true original locations according to the best available evidence. Excepting as new or modified vacant subdivisions are shown hereon, the lottings and areas are as shown on the plats approved January 5, 1884, June 18, 1904, July 30, 1904, and plats accepted November 28, 1950, and November 3, 1958.

This survey was executed by Eldon W. Sibley, Cadastral Surveyor, July 12, 1962, to June 15, 1965, under Special Instructions dated June 5, 1962, for Group No. 401, Nevada.

Unless otherwise indicated in the field notes, all courses and distances, shown on the plat along the perimeter of the mineral segregation areas, were taken or computed from the appropriate mineral survey record.

Sec. 26 Surveyed by

Stewart and Conkling

in 1883

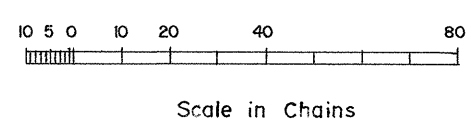
UNITED STATES DEPARTMENT OF THE INTERIOR
BUREAU OF LAND MANAGEMENT
Washington, D. C. December 17, 1965

This plat is strictly conformable to the approved field notes, and the survey, having been correctly executed in accordance with the requirements of law and the regulations of this Bureau, is hereby accepted.

For the Director

E. Sibley
Chief, Division of Engineering

Total area of segregation 293.66 Acres
Total area exclusive of segregation 19,485.69 Acres
Total area dependently resurveyed 19,779.35 Acres



Latitude 38°51'07.3"N
Longitude 117°55'34.6"W

1070-E-1 (sheet 1 of 3)

T12N, R36E