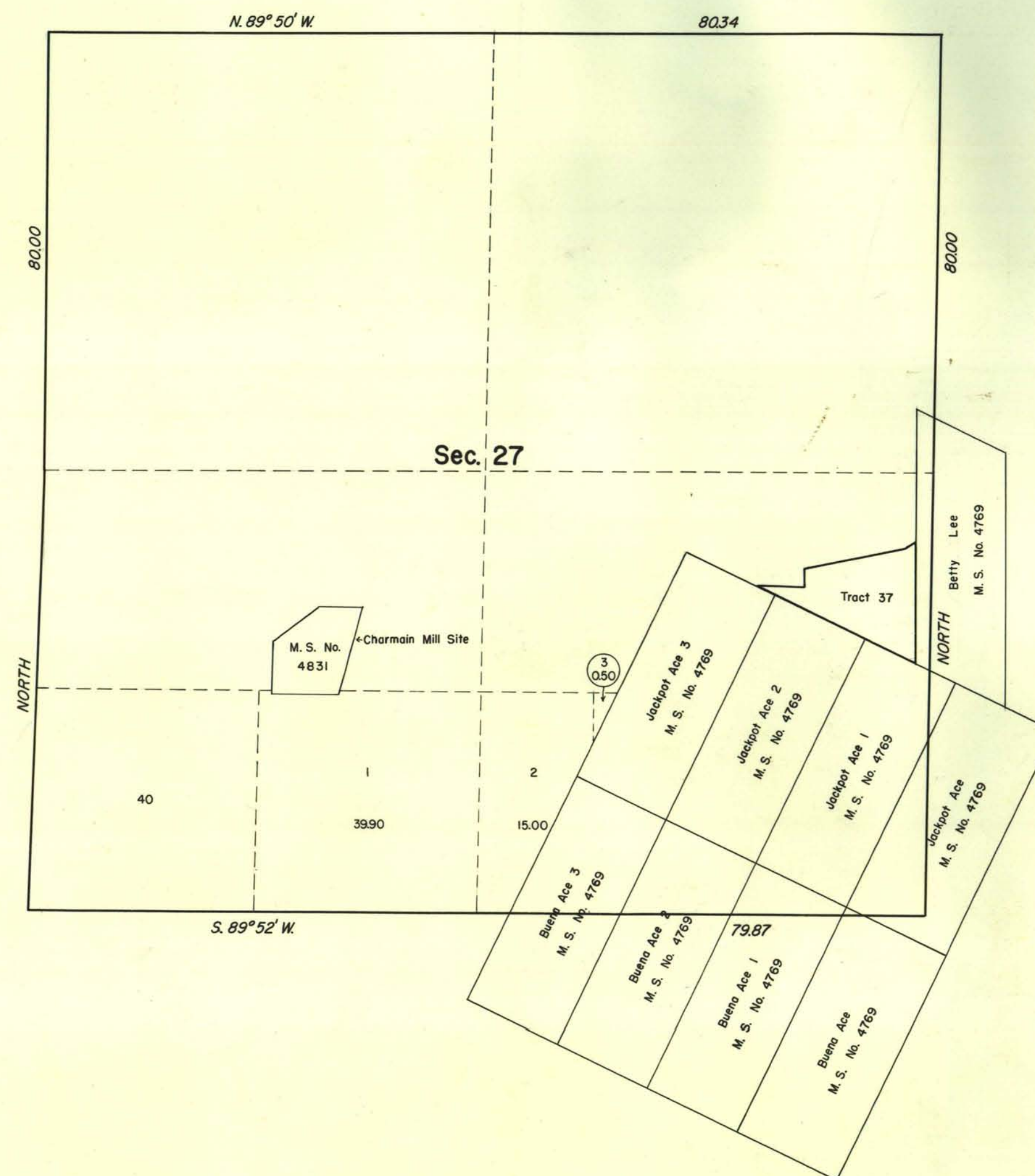


TOWNSHIP 12 NORTH, RANGE 36 EAST, MOUNT DIABLO MERIDIAN, NEVADA
SUPPLEMENTAL PLAT OF SECTION 27



This plat, segregating unpatented Charmain Mill Site, M. S. No. 4831 and patented M. S. No. 4769 in the $S\frac{1}{2}$ of Sec. 27, T. 12 N., R. 36 E., Mt. Diablo Meridian, Nevada, is based upon plat approved January 5, 1884, plat accepted November 28, 1950, and the record of the mineral surveys.

UNITED STATES DEPARTMENT OF THE INTERIOR
BUREAU OF LAND MANAGEMENT
Washington, D.C. November 3, 1958

This plat, showing amended lotting, is based upon the official records, and having been correctly prepared in accordance with the regulations, is hereby accepted.

For the Director

Ronald Clement
Acting Cadastral Engineering Staff Officer

1070 B

Sec. 27, T. 12 N., R. 36 E.

MS.
CLB