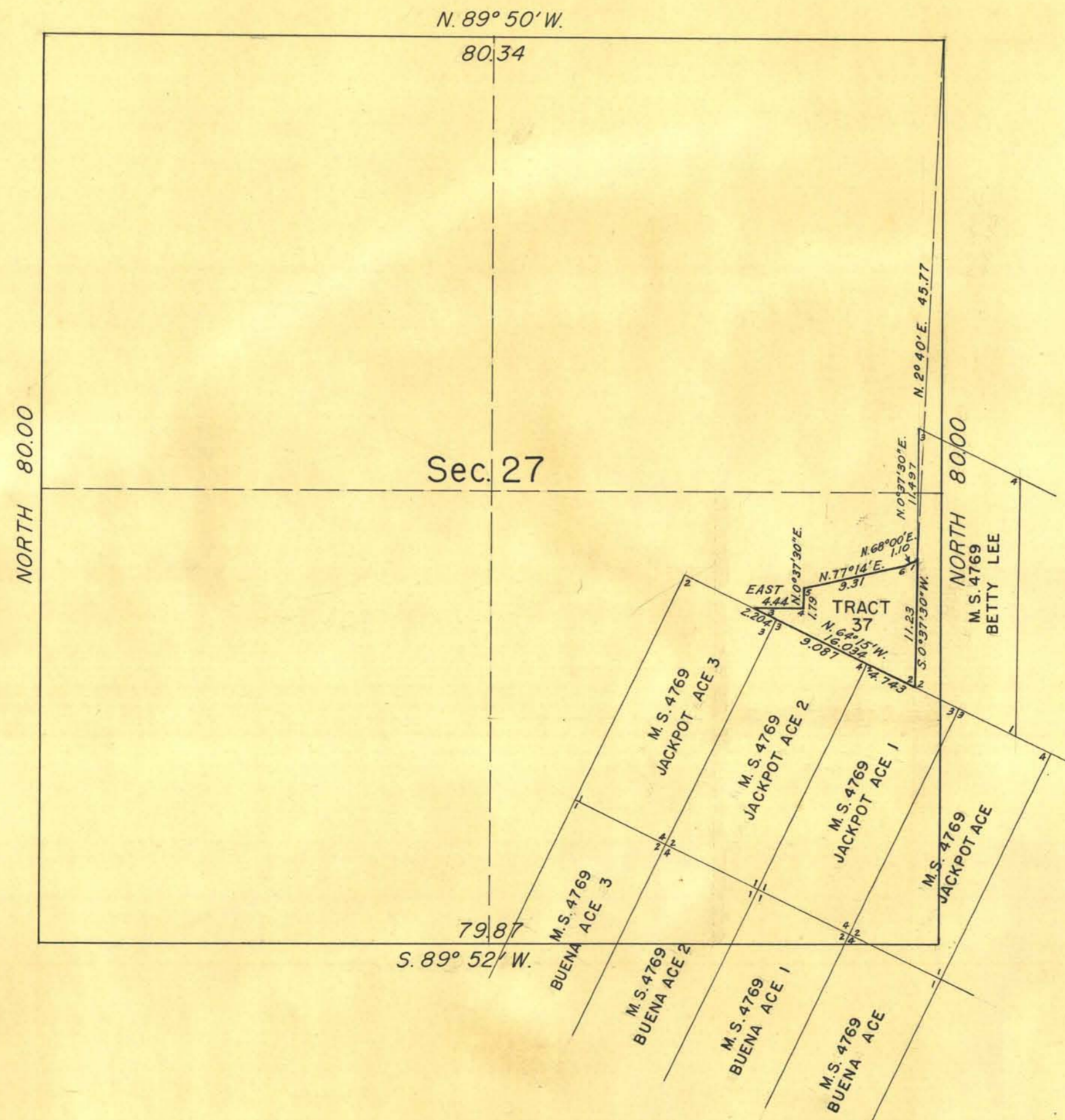


TOWNSHIP 12 NORTH, RANGE 36 EAST, MOUNT DIABLO MERIDIAN, NEVADA.
METES-AND-BOUNDS SURVEY

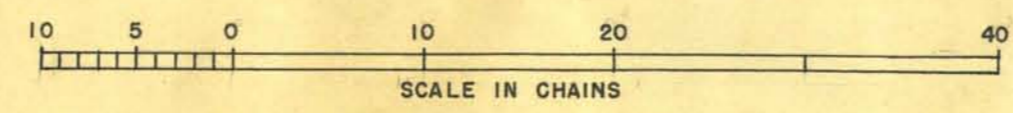


TRACT 37 8.02 ACRES

UNITED STATES DEPARTMENT OF THE INTERIOR
BUREAU OF LAND MANAGEMENT
WASHINGTON, D. C., NOVEMBER 28, 1950

THIS PLAT IS STRICTLY CONFORMABLE TO THE APPROVED FIELD NOTES,
AND THE SURVEY, HAVING BEEN CORRECTLY EXECUTED IN ACCORDANCE WITH
THE REQUIREMENTS OF LAW AND THE REGULATIONS OF THIS BUREAU, IS
HEREBY ACCEPTED.

FOR THE DIRECTOR
William F. Richards
CHIEF, BRANCH OF SURVEYS



METES-AND-BOUNDS SURVEY OF TRACT 37 WITH
CONNECTION LINES, IN SE 1/4 SEC. 27, T. 12 N., R. 36
E., M.D.M., NEVADA, EXECUTED BY EMIL VOIGT, CADAS-
TRAL ENGINEER, NOVEMBER 8 TO 10, 1950, INCLUSIVE,
UNDER SPECIAL INSTRUCTIONS DATED NOVEMBER 1, 1950,
FOR GROUP 356 NEVADA, AUTHORIZED BY BUREAU OF LAND
MANAGEMENT MEMORANDUM "E" DATED OCTOBER 20, 1950.
BOUNDARIES OF SEC. 27 SURVEYED BY STEWART
AND CONKLIN IN 1883 AS SHOWN ON PLAT APPROVED
JANUARY 5, 1884.

T.H.D.

REC
1000

10700

T.12N, R.36E.