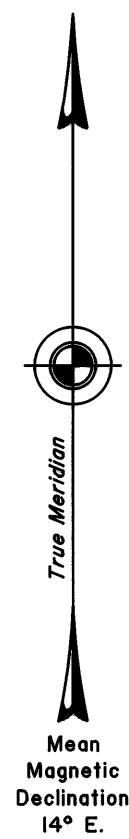


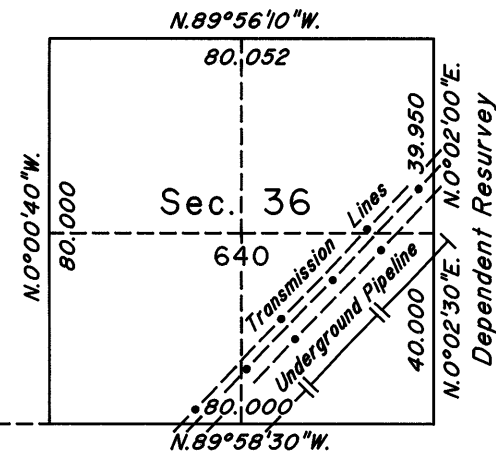
TOWNSHIP 11 SOUTH, RANGE 69 EAST, OF THE MOUNT DIABLO MERIDIAN, NEVADA
INDEPENDENT AND DEPENDENT RESURVEY



Original Survey by W. H. Myrick in 1881
Survey Suspended August 18, 1964

R. 68E.
R. 69E.
T. 11S.
T. 12S.
U.S.G.S.
Latitude 36°55'49.326"N.
Longitude 114°19'35.313"W.
NAD 83

399.610
N. 89°58'30"W.



10 5 0 10 20 40 80
Scale in Chains
Area Resurveyed 640.00 Acres

A history of surveys is contained in the field notes.

This plat represents a dependent resurvey of a portion of the east boundary of Township 11 South, Range 69 East, Mount Diablo Meridian, Nevada designed to restore the corners in their true original locations according to the best available evidence and an independent resurvey of a portion of the south boundary and a portion of the subdivisional lines superseding section 36 as shown on the plat approved December 2, 1881.

Survey executed by Richard A. Zaninovich, Cadastral Surveyor, beginning December 19, 2000, and completed December 21, 2000, pursuant to Special Instructions dated December 14, 2000, for Group No. 796, Nevada.

UNITED STATES DEPARTMENT OF THE INTERIOR
BUREAU OF LAND MANAGEMENT

Reno, Nevada May 8, 2001

This plat is strictly conformable to the approved field notes, and the survey, having been correctly executed in accordance with the requirements of law and the regulations of this Bureau, is hereby accepted.

For the Director

Chief Cadastral Surveyor, Nevada

T. 11S., R. 69E., M.D.M.