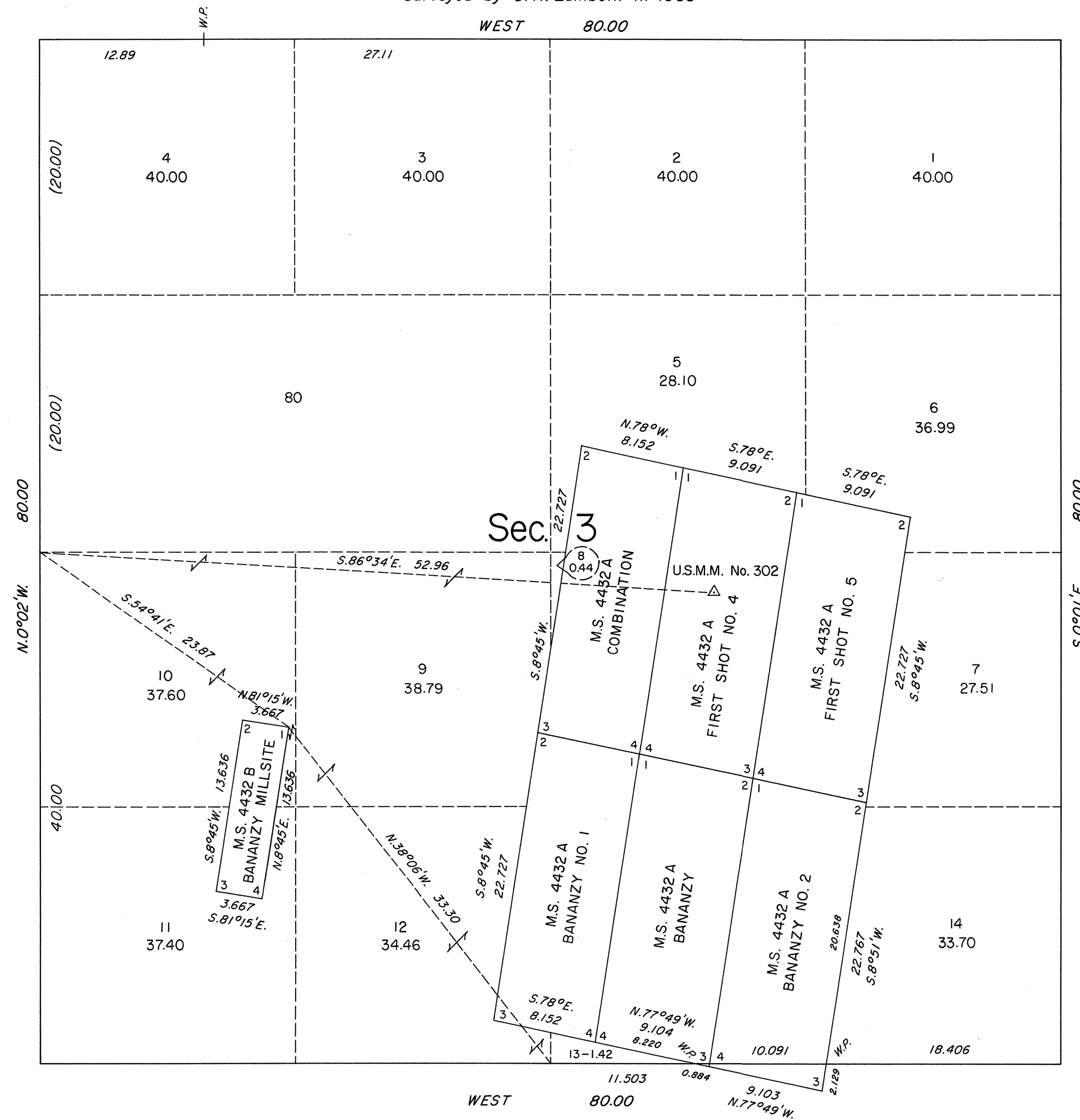


ORIGINAL

Sheet No. 2 of 2 Sheets

TOWNSHIP 11 NORTH, RANGE 69 EAST, OF THE MOUNT DIABLO MERIDIAN, NEVADA  
ENLARGED DIAGRAM OF SECTION 3

Surveyed by S. R. Lambeth in 1988



Reference should be made to Sheet No. 1 for survey information.

UNITED STATES DEPARTMENT OF THE INTERIOR  
BUREAU OF LAND MANAGEMENT

Reno, Nevada

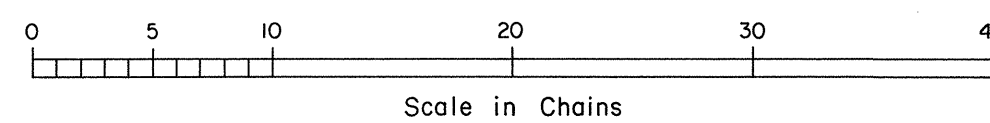
June 15, 1989

This plat is strictly conformable to the approved field notes, and the survey, having been correctly executed in accordance with the requirements of law and the regulations of this Bureau, is hereby accepted.

For the Director

*Lael E. Bland*

Chief Cadastral Surveyor



T.11N., R.69E., M.D.M.